



DARVIL L. OSBY
FIRE CHIEF
FORESTER & FIRE WARDEN

COUNTY OF LOS ANGELES
FIRE DEPARTMENT

FUEL MODIFICATION UNIT
605 NORTH ANGELENO AVENUE
AZUSA, CA 91702
(626) 969-5205
www.fire.losangeles.gov/forestry-division/forestry-fuel-modification/

"Proud Protectors of Life, Property, and the Environment"

BOARD OF SUPERVISORS
HILDA L. SOLIS
FIRST DISTRICT
MARK RIDLEY-THOMAS
SECOND DISTRICT
SHEILA KUEHL
THIRD DISTRICT
JANICE HAHN
FOURTH DISTRICT
KATHRYN BARGER
FIFTH DISTRICT

FUEL MODIFICATION PLAN NOTES

Zone A – Setback Zone

- Extends 20 feet beyond the edge of any combustible structure, accessory structure, appendage or projection. Overhangs or other parts of the structure not accurately reflected on the plans may negate the approval of plant location on the approved plan.
- Irrigation by automatic or manual systems shall be provided to landscaping to maintain healthy vegetation and fire resistance.
- Landscaping and vegetation in this zone shall consist primarily of green lawns, ground covers not exceeding 6 inches in height, and adequately spaced shrubs. The overall characteristics of the landscape shall provide adequate defensible space in a fire environment.
- Plants in Zone A shall be inherently highly fire resistant and spaced appropriately. Species selection should be made referencing the Fuel Modification Plant List. Other species may be utilized subject to approval. Final or revised Plans submitted after 6 months from the initial submittal will have plants in all zones evaluated based on the most current Fuel Modification Plant List available from the Fuel Modification Unit.
- Except for dwarf varieties or mature trees small in stature, trees are generally **not recommended** within Zone A.
- Target species will typically not be allowed within 30 or more feet of combustible structures and may require removal if existing on site.
- Vines and climbing plants shall not be allowed on any combustible structure requiring review.

Zone B – Irrigated Zone

- Extends from the outermost edge of Zone A to 100 feet from structure.
- Irrigation by automatic or manual systems shall be provided to landscaping to maintain healthy vegetation and fire resistance.
- Landscaping and vegetation in this zone shall typically consist primarily of green lawns, ground covers, and adequately spaced shrubs and trees.
- Unless otherwise approved, Ground covers shall be maintained at a height not to exceed 6 inches in Zone A and B. If on a slope 12 inches is acceptable in Zone B within 50 feet of a structure and 18 inches beyond 50 feet. The overall characteristics of the landscape shall provide adequate defensible space in a fire environment. Specimen native plants may be approved to remain if properly maintained for adequate defensible space. Annual grasses and weeds shall be maintained at a height not to exceed 3 inches.
- Plants in Zone B shall typically be fire resistant and spaced appropriately. Species selection should be made referencing the Fuel Modification Plant List. Other species may be utilized subject to approval.
- Vegetation in this zone may consist of modified existing native plants, adequately spaced ornamental shrubs and trees, or both. There may also be replacement landscape planting with ornamental or native species to meet minimum slope coverage requirements of City or County agencies or other Landscape or Hillside ordinances. In all cases the overall characteristics of the landscape shall provide adequate defensible space in a fire environment.
- Target species will typically not be allowed within 30 or more feet of combustible structures and may require removal if existing on site. This distance may extend to 50 feet if the situation dictates.
- Irrigation systems are not required for this zone if it consists entirely of native plants. (Native plants are generally not compatible with regular, un-seasonal supplemental water.)
- All trees, unless otherwise approved, shall be planted far enough from structures and Fire Department accesses as to not overhang any structure or access at maturity.

Zone C – Native Brush Thinning Zone

- Extends from the outermost edge of Zone B up to 200 feet from structure or to property line
- Required thinning and clearance will be determined upon inspection. Required clearance may increase to the maximum allowed by the Fire Code as needed because of vegetation growth.
- Irrigation systems are not required for this zone if it consists entirely of native plants. (Native plants are generally not compatible with regular, un-seasonal supplemental water.)
- Vegetation in this zone may consist of modified existing native plants, adequately spaced ornamental shrubs and trees, or both. There may also be replacement landscape planting with ornamental or native species to meet minimum slope coverage requirements of City or County agencies or other Landscape or Hillside ordinances. In all cases the overall characteristics of the landscape shall provide adequate defensible space in a fire environment.
- Plants in Zone C shall be spaced appropriately. Existing native vegetation shall be modified by thinning and removal of those species constituting a fire risk. These species include, but are not limited to chamise, sage, sage brush, and buckwheat.
- Annual grasses and weeds shall be maintained at a height not to exceed 3 inches.
- General spacing for existing native shrubs or groups of shrubs is 15 feet between canopies. Native plants may be thinned by reduced amounts as the distance from development increases.
- General spacing for existing native trees or groups of trees is 30 feet between canopies. This distance may increase or decrease depending on the slope, arrangement of the trees in relation to slope, and the species of tree.

Fire Access Road Zone

- Extends a minimum of 10 feet from the edge of any public or private roadway that may be used as access for fire-fighting apparatus or resources.
- Clear and remove flammable growth for a minimum of 10 feet on each side of Fire Access Roads. (Fire Code 325.10) Additional clearance beyond 10 feet may be required upon inspection.
- Fire access roads, driveways and turnarounds shall be maintained in accordance with fire code. Fire Access Roads shall have unobstructed vertical clearance for a width of 20 feet. (Fire Code 503.2.1)
- Landscaping and native plants within the Fire Access Road Zone shall be appropriately spaced and maintained to provide safe egress in wildland fire environments.
- All trees, unless otherwise approved, shall be planted far enough from structures and Fire Department accesses as to not overhang any structure or access at maturity.

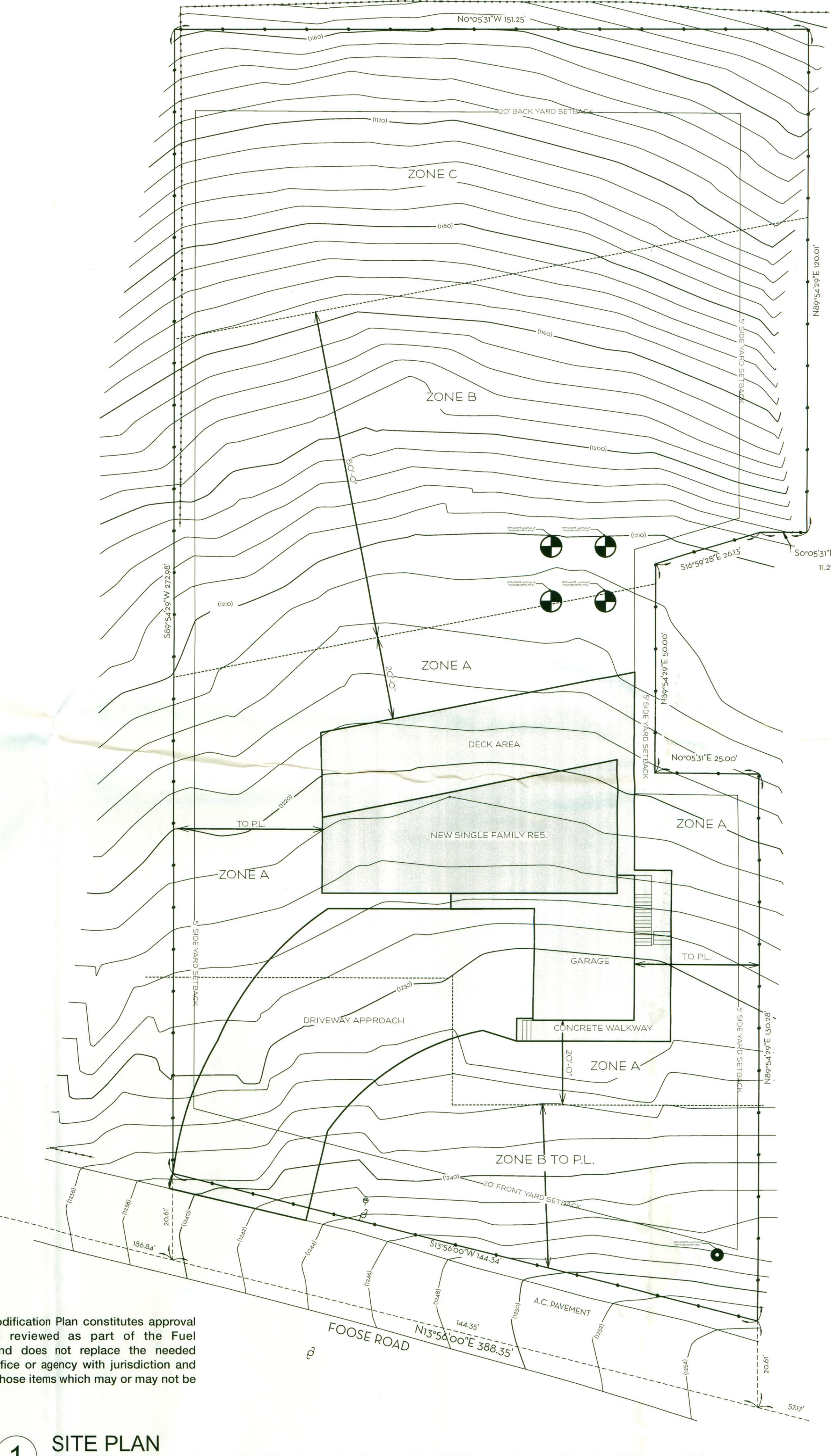
Maintenance

Routine maintenance shall be regularly performed in all zones. Requirements include but are not limited to those items in the Fuel Modification Guidelines and those outlined below:

- Removal or thinning of undesirable combustible vegetation and removal of dead or dying landscaping to meet minimum brush clearance requirements.
- Pruning and thinning to reduce the overall fuel load and continuity of fuels.
- Fuel loads shall be reduced by pruning lower branches of trees and tree-form shrubs to 1/3 of their height, or 6 feet from lowest hanging branches to the ground, to help prevent fire from spreading and make maintenance easier. Trees with understorey plants should be limbed up at least three times the height of the underlying vegetation or up to a height of 40 feet, whichever is less, to help prevent fire from spreading upward into the crown.
- Accumulated plant litter and dead wood shall be removed. Debris and trimmings produced by thinning and pruning should be removed from the site or chipped and evenly dispersed in the same area to a maximum depth of 6 inches.
- All invasive species and their parts should be removed from the site.
- Manual and automatic irrigation systems shall be maintained for operational integrity and programming. Effectiveness should be regularly evaluated to avoid over or under-watering.
- Compliance with the Fire Code is a year-round responsibility. Enforcement will occur following inspection by the Fire Department. Annual inspections for brush clearance code requirements are conducted following the natural drying of grasses and fine fuels, between the months of April and June depending on geographic region. Inspection for compliance with an approved Fuel modification Plan may occur at any time of year.
- Brush Clearance enforcement issues on adjacent properties should be directed to the County of Los Angeles Fire Department's Brush Clearance Unit at (626) 969-2375.
- All future plantings shall be in accordance with the County of Los Angeles Fire Department Fuel Modification Guidelines and approved prior to installation. Changes to the approved plan which require an additional plan review will incur a plan review fee.
- Questions regarding landscape planting and maintenance with regard to fire safety should be directed to the Fire Department's Fuel Modification Unit at (626) 969-5205.

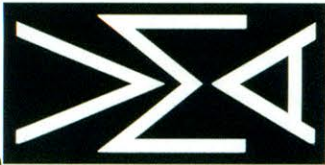
Approval of this Fuel Modification Plan constitutes approval for only those Codes reviewed as part of the Fuel Modification process and does not replace the needed approval of any other office or agency with jurisdiction and review responsibility for those items which may or may not be illustrated on the plan.

1 SITE PLAN
SCALE: 1/16" = 1'-0"



6434
COUNTY OF LOS ANGELES
FIRE DEPARTMENT
PREVENTION SERVICES BUREAU
FINAL
FUEL MODIFICATION PLAN
APPROVED
By: R.W.L. Date: 07/13/18
The stamping of this plan and specifications
SHALL NOT be held to permit or to be an
approval of the violation of any provisions of
any County/City or State law

VITUS MATARÉ & ASSOCIATES, INC.
P.O. BOX 1204, MALIBU, CA 90265
310.317.0700
info@vitusmataré.com



WEBB RESIDENCE
2807 FOOSE ROAD
CITY OF MALIBU, LOS ANGELES COUNTY, CA. 90265
FUEL MODIFICATION PLAN

I	7-2-18	VM
MARK	DATE	DESCRIPTION

PROJECT NO:
MODEL FILE:
DRAWN BY:

FM-1