

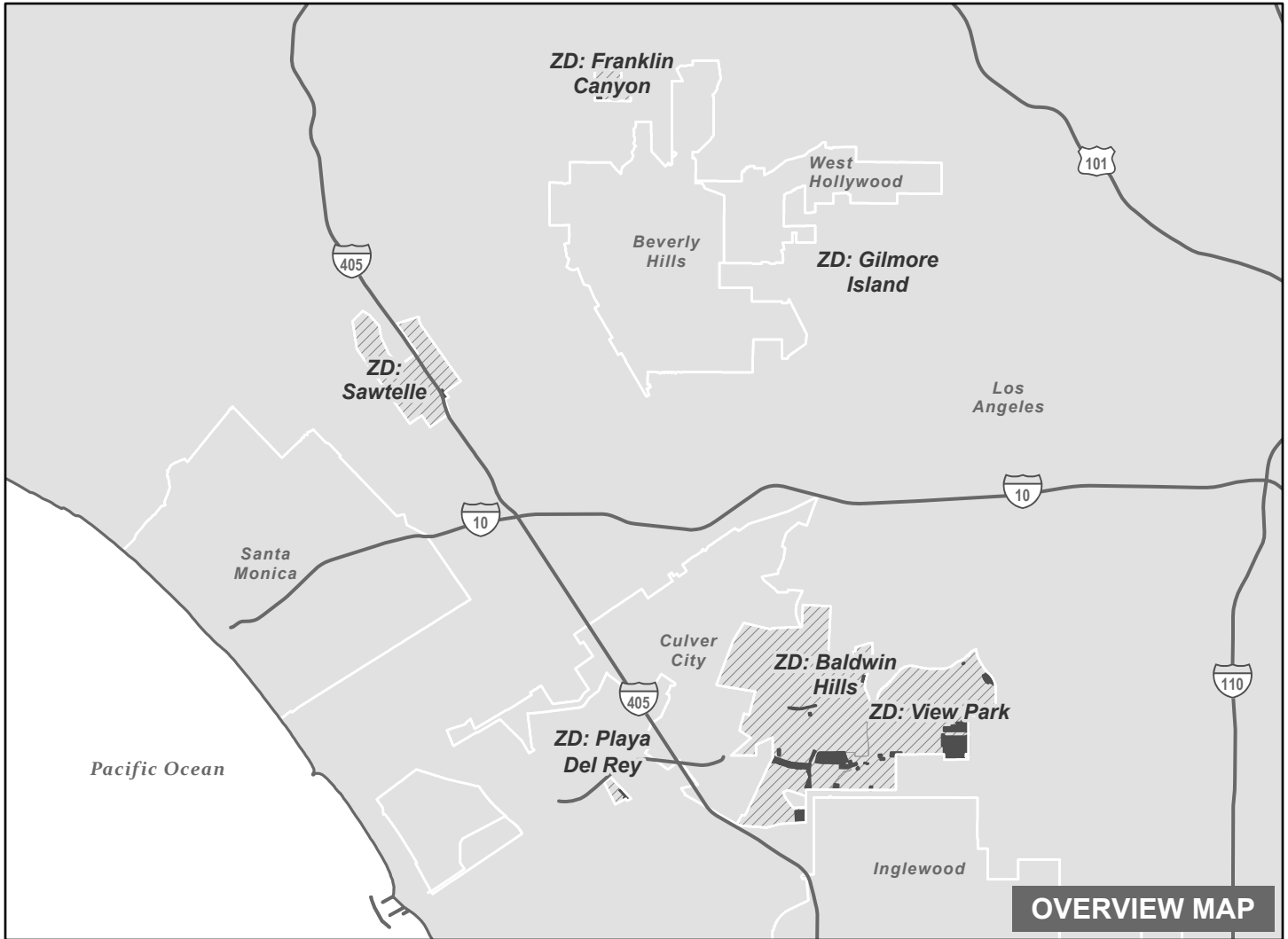
AMENDMENT TO COUNTYWIDE GENERAL PLAN

WESTSIDE PLANNING AREA


PLAN AMENDMENT: RPPL2023002433

ON: _____

MULTIPLE LAND USE POLICY CHANGES

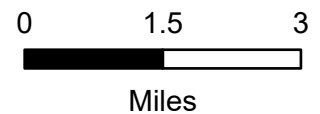


 Freeway

 Selected Zoned District (ZD)

 Land Use Policy Change Area

 City / Unincorporated Boundary



THE REGIONAL PLANNING COMMISSION
COUNTY OF LOS ANGELES
PAM O'CONNOR, CHAIR
AMY J. BODEK, AICP, DIRECTOR OF REGIONAL PLANNING

Westside Planning Area Land Use Policy Changes

Zoned District(s): Playa Del Rey

Land Use Policy Change

 MU - Mixed Use

Base Layers

 Zoned District

 Parcels

 Unincorporated Area

 Incorporated City

 Map Series Grid

Street Types

 Freeway

 Primary

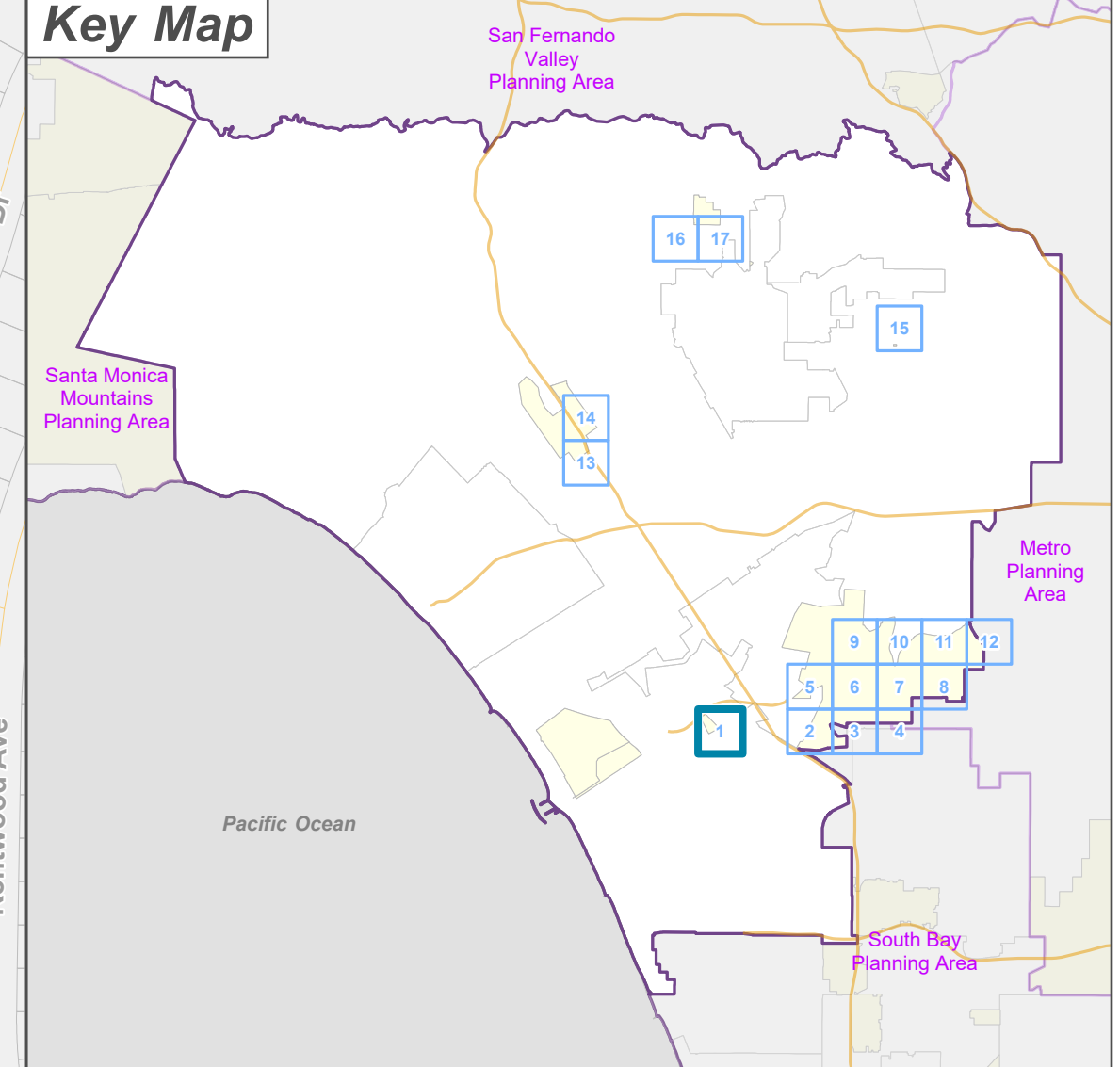
 Secondary

 Minor

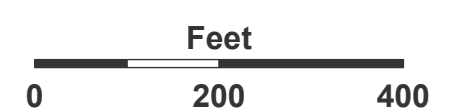
 Ramp

 Alley

Key Map



LOS ANGELES COUNTY
Dept. of Regional Planning
320 W. Temple St.
Los Angeles, CA 90012



Westside Planning Area Land Use Policy Changes

Zoned District(s): Baldwin Hills

Land Use Policy Change

IL - Light Industrial

Base Layers

Zoned District

Parcels

Unincorporated Area

Incorporated City

Map Series Grid

Surrounding Planning Area

Street Types

Freeway

Primary

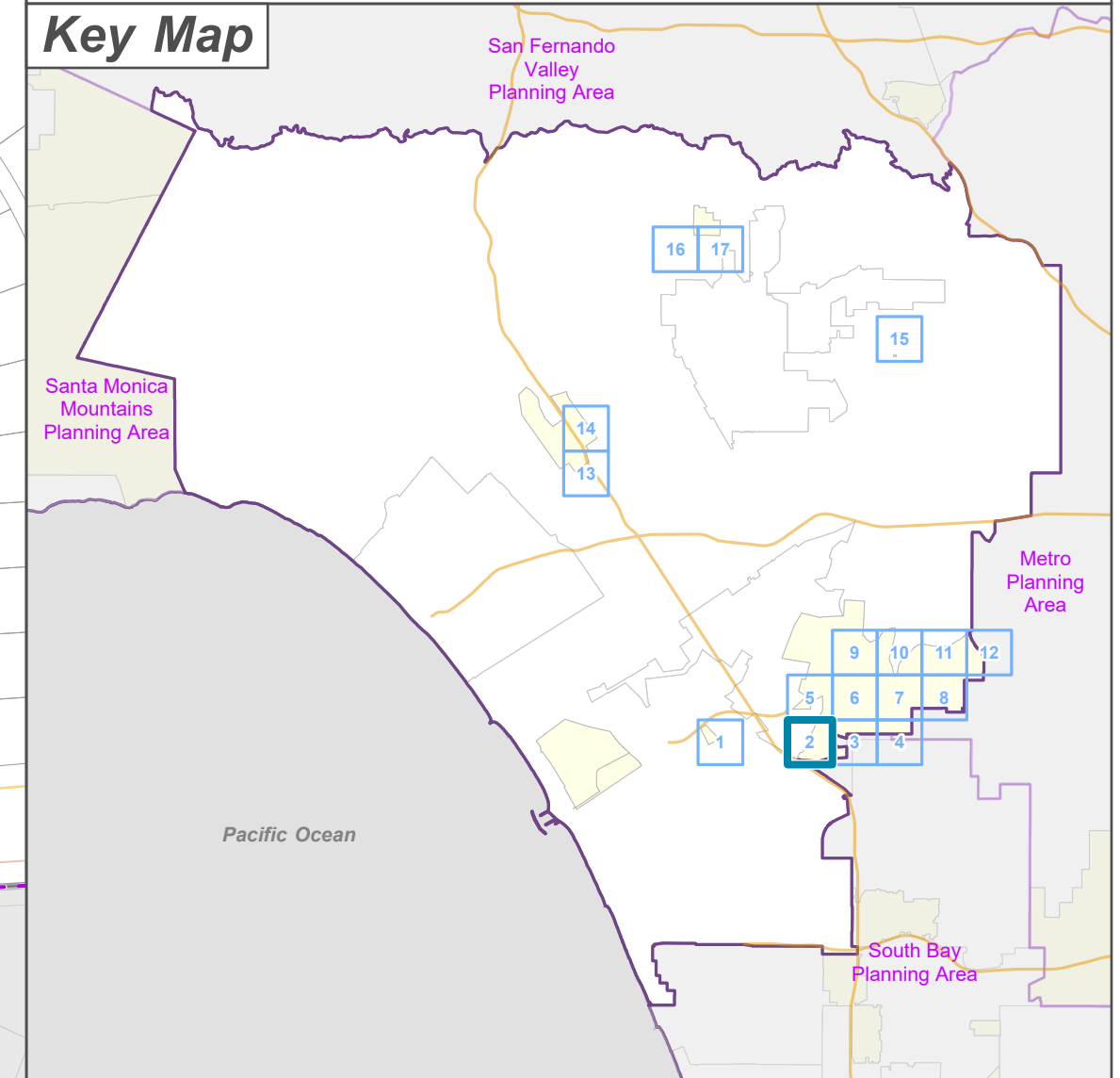
Secondary

Minor

Ramp

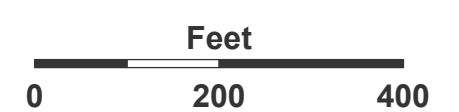
Alley

Key Map

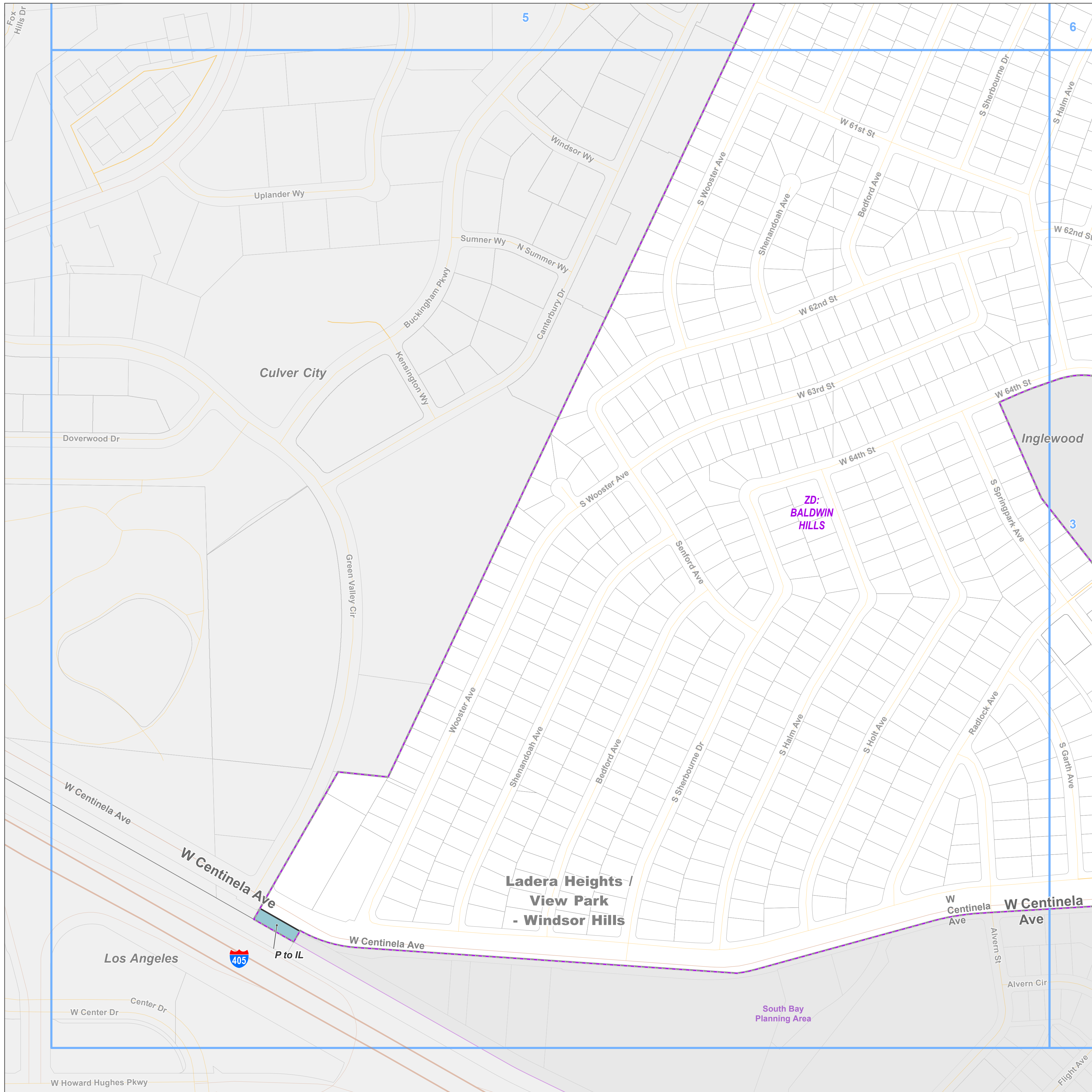


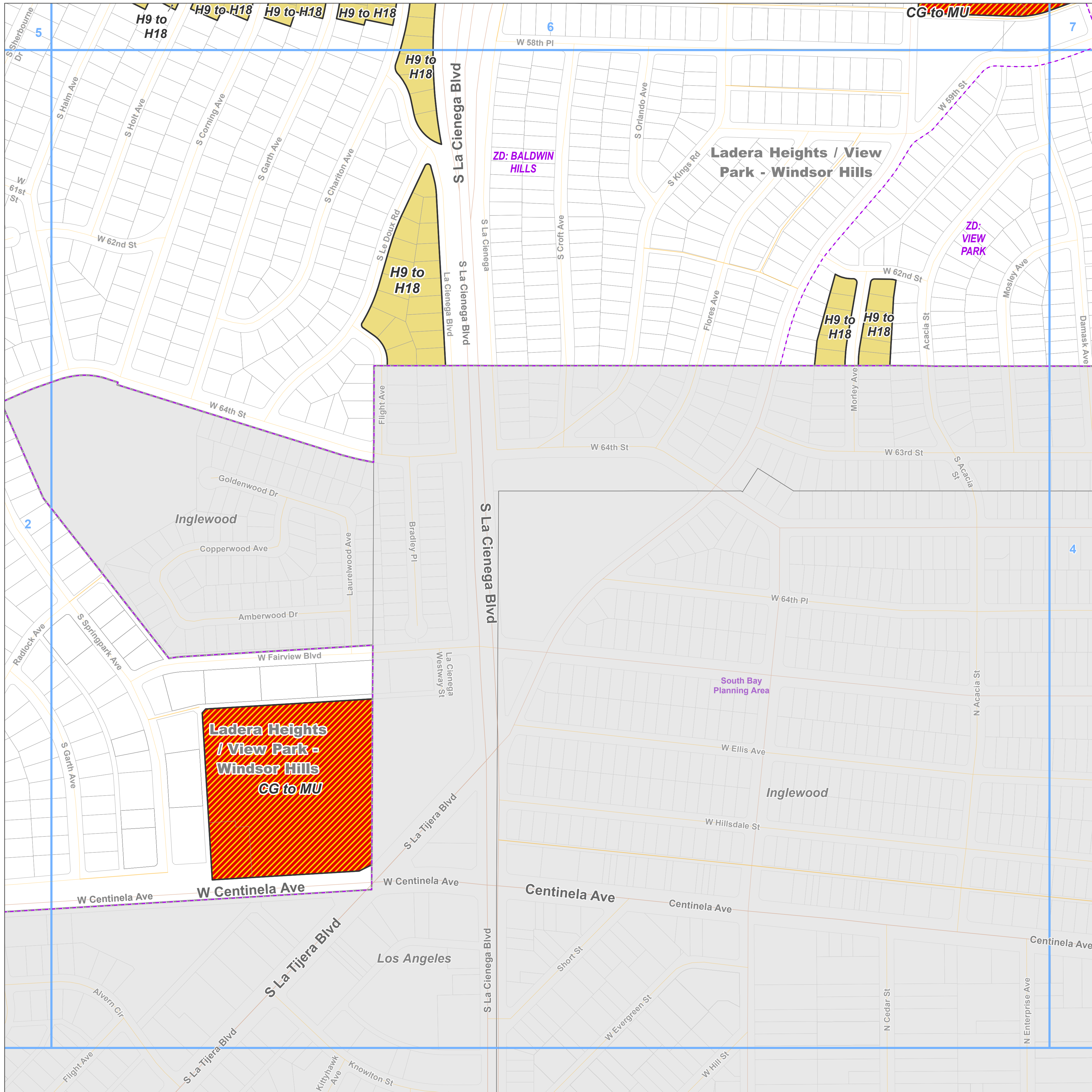
LA COUNTY
PLANNING

LOS ANGELES COUNTY
Dept. of Regional Planning
320 W. Temple St.
Los Angeles, CA 90012



Prepared by DRP GIS Section / September 2024





Land Use Policy Change

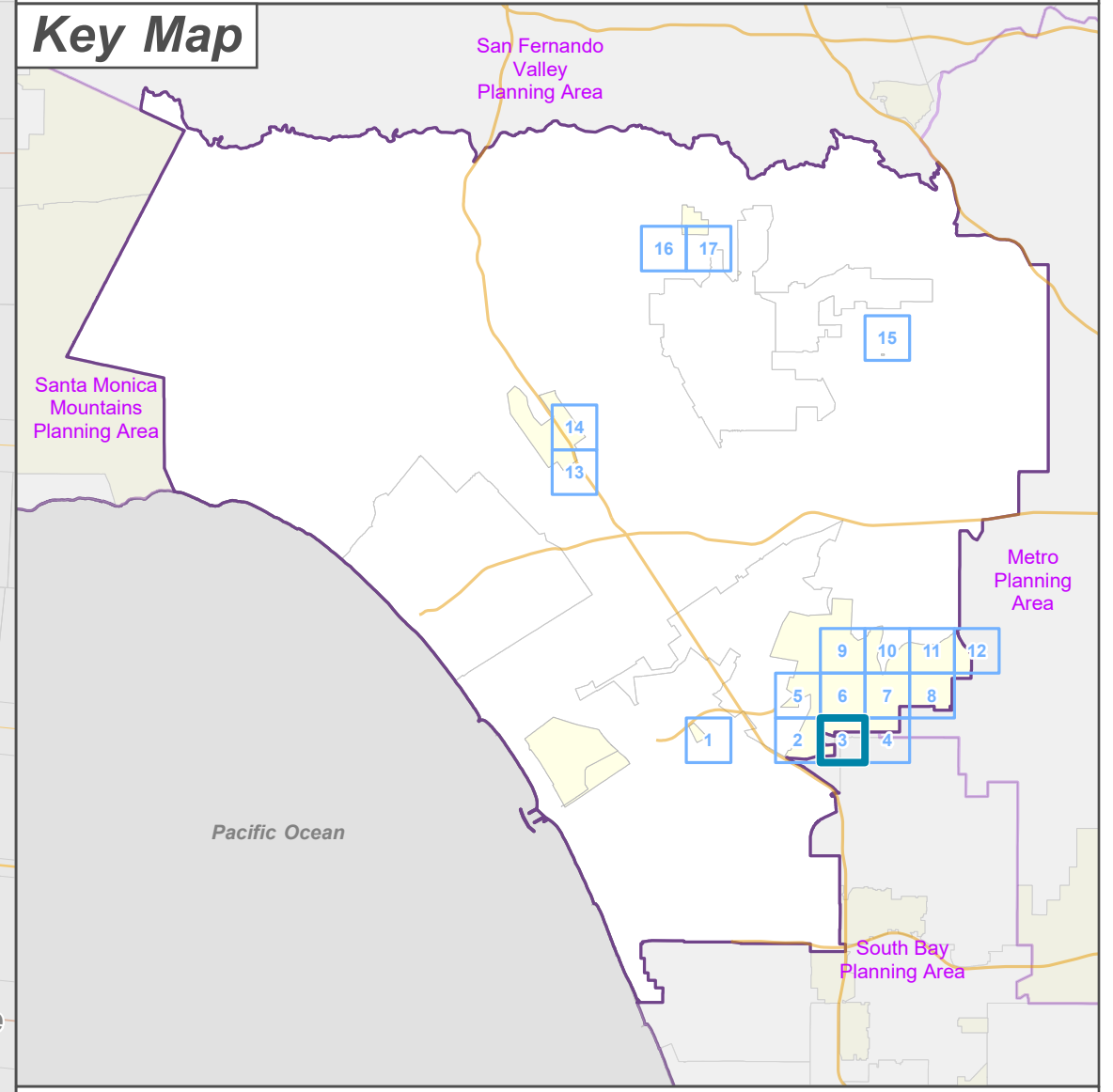
- H18 - Residential 18
- MU - Mixed Use

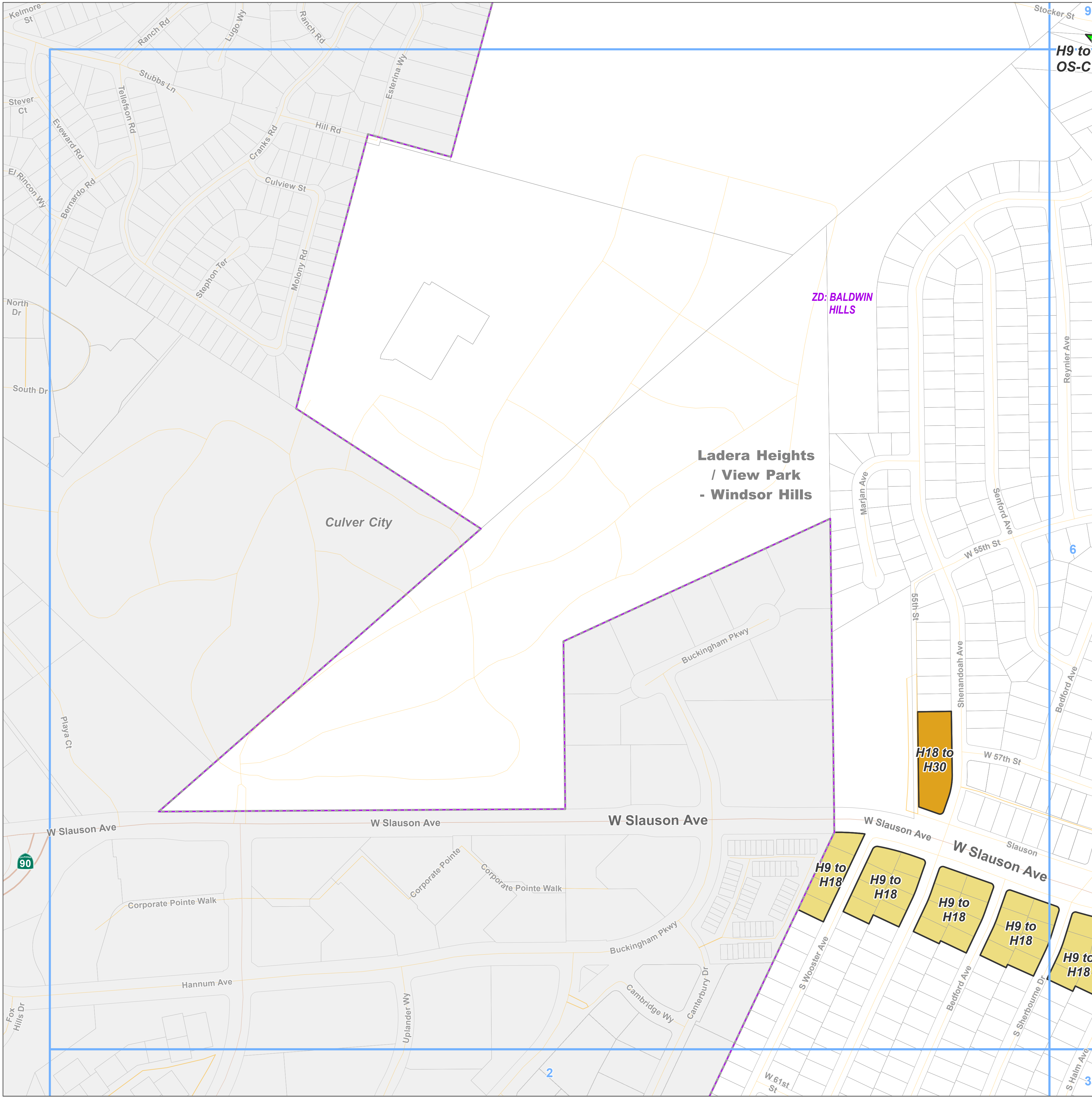
Base Layers

- Zoned District
- Parcels
- Unincorporated Area
- Incorporated City
- Map Series Grid
- Surrounding Planning Area

Street Types

- Primary
- Secondary
- Minor
- Alley





Los Angeles County
**Westside Planning Area
 Land Use Policy Changes**

Zoned District(s): Baldwin Hills

Land Use Policy Change

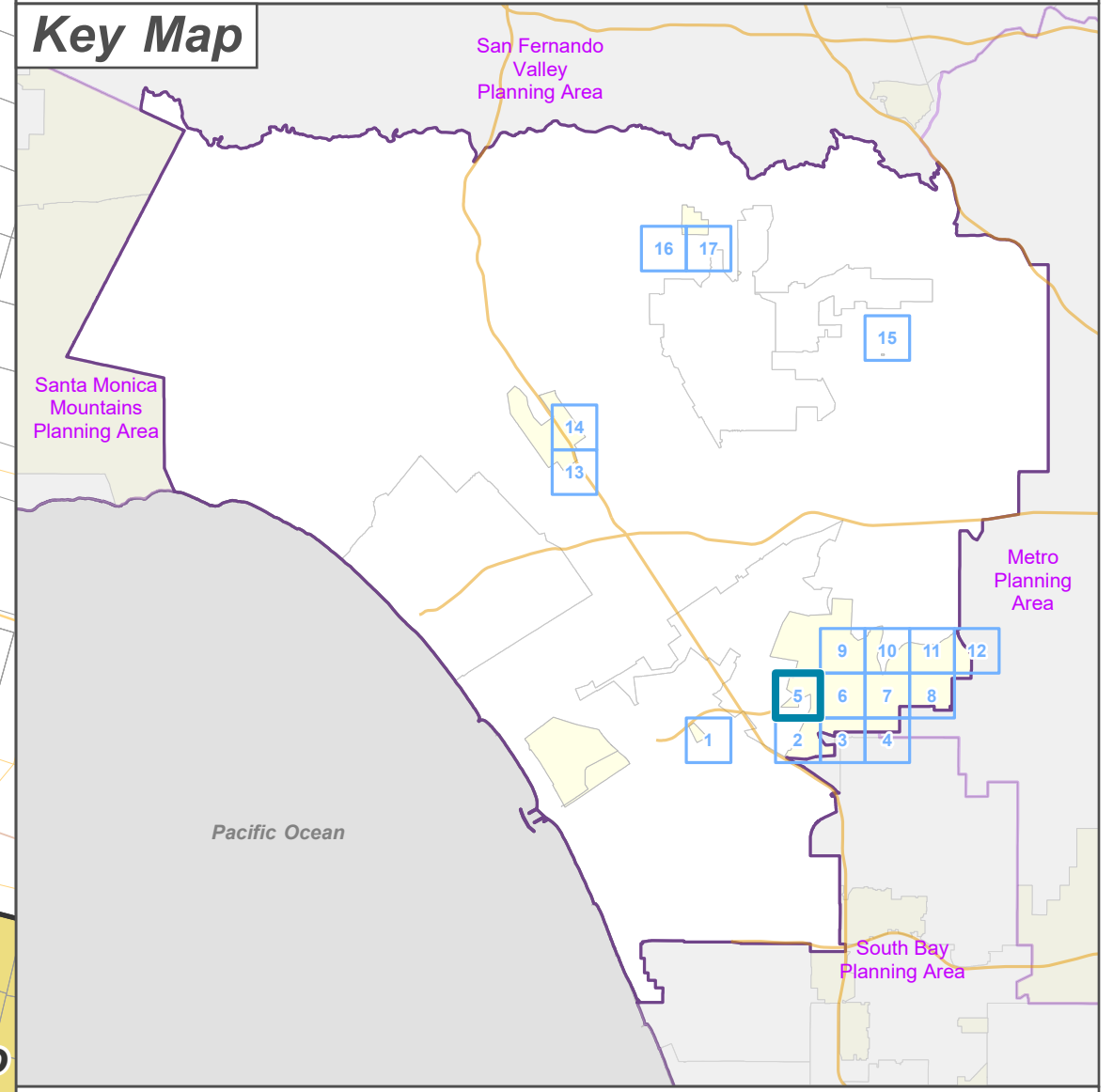
- H18 - Residential 18
- H30 - Residential 30
- OS-C - Open Space - Conservation


Base Layers

- Zoned District
- Parcels
- Unincorporated Area
- Incorporated City
- Map Series Grid

Street Types

- Freeway
- Primary
- Secondary
- Minor
- Ramp
- Alley






**LA COUNTY
PLANNING**

LOS ANGELES COUNTY
 Dept. of Regional Planning
 320 W. Temple St.
 Los Angeles, CA 90012

Feet

0 200 400

Prepared by DRP GIS Section / September 2024





**Westside Planning Area
Land Use Policy Changes**

Zoned District(s): Baldwin Hills,
View Park

Land Use Policy Change

- H18 - Residential 18
- MU - Mixed Use
- OS-C - Open Space - Conservation
- P - Public and Semi-Public

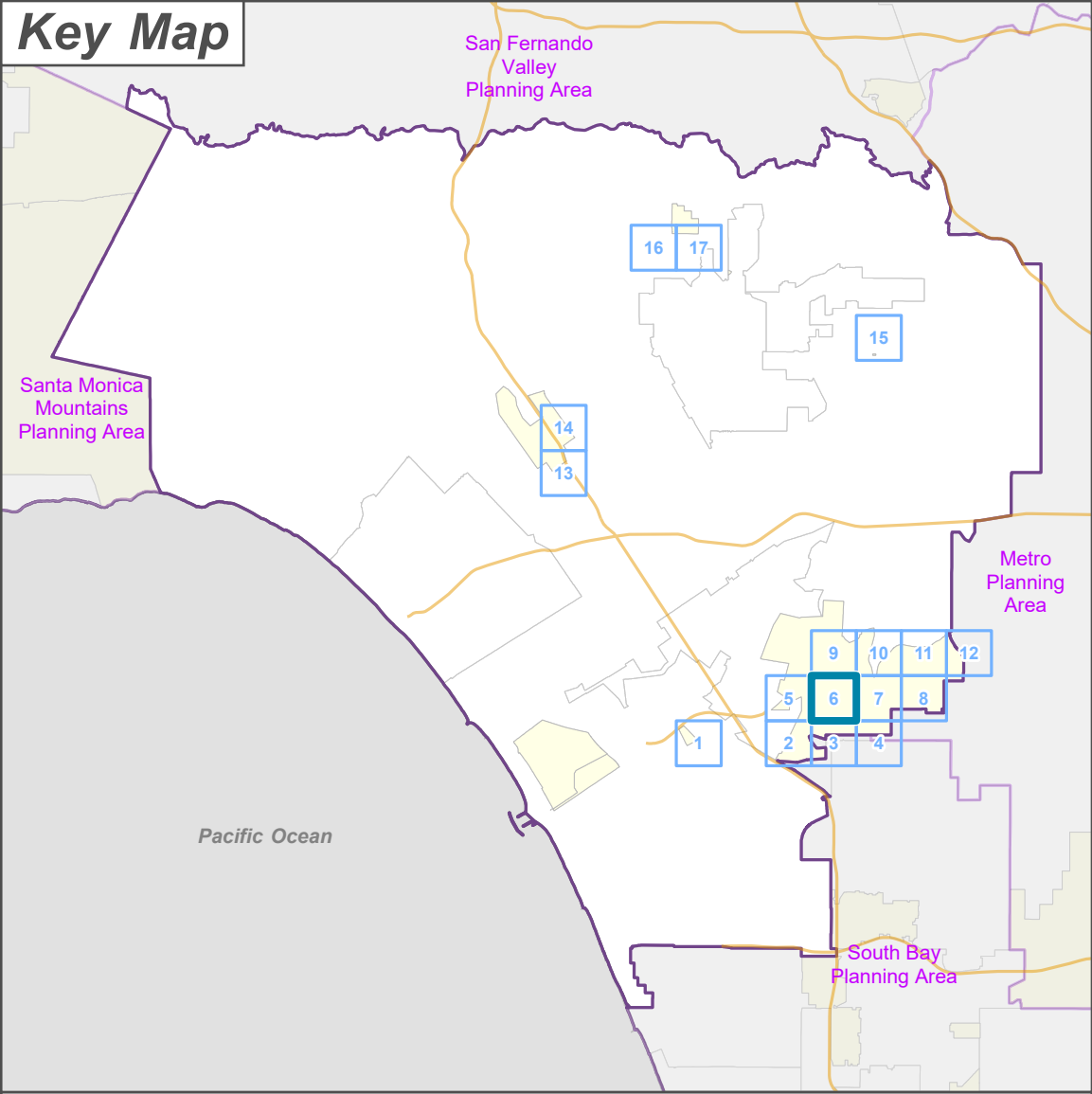
Base Layers

- Zoned District
- Parcels
- Unincorporated Area
- Map Series Grid

Street Types

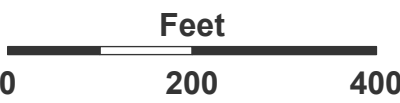
- Primary
- Secondary
- Minor
- Alley

Key Map



**LA COUNTY
PLANNING**




LOS ANGELES COUNTY
Dept. of Regional Planning
320 W. Temple St.
Los Angeles, CA 90012



Westside Planning Area Land Use Policy Changes

Zoned District(s): Baldwin Hills,
View Park

Land Use Policy Change

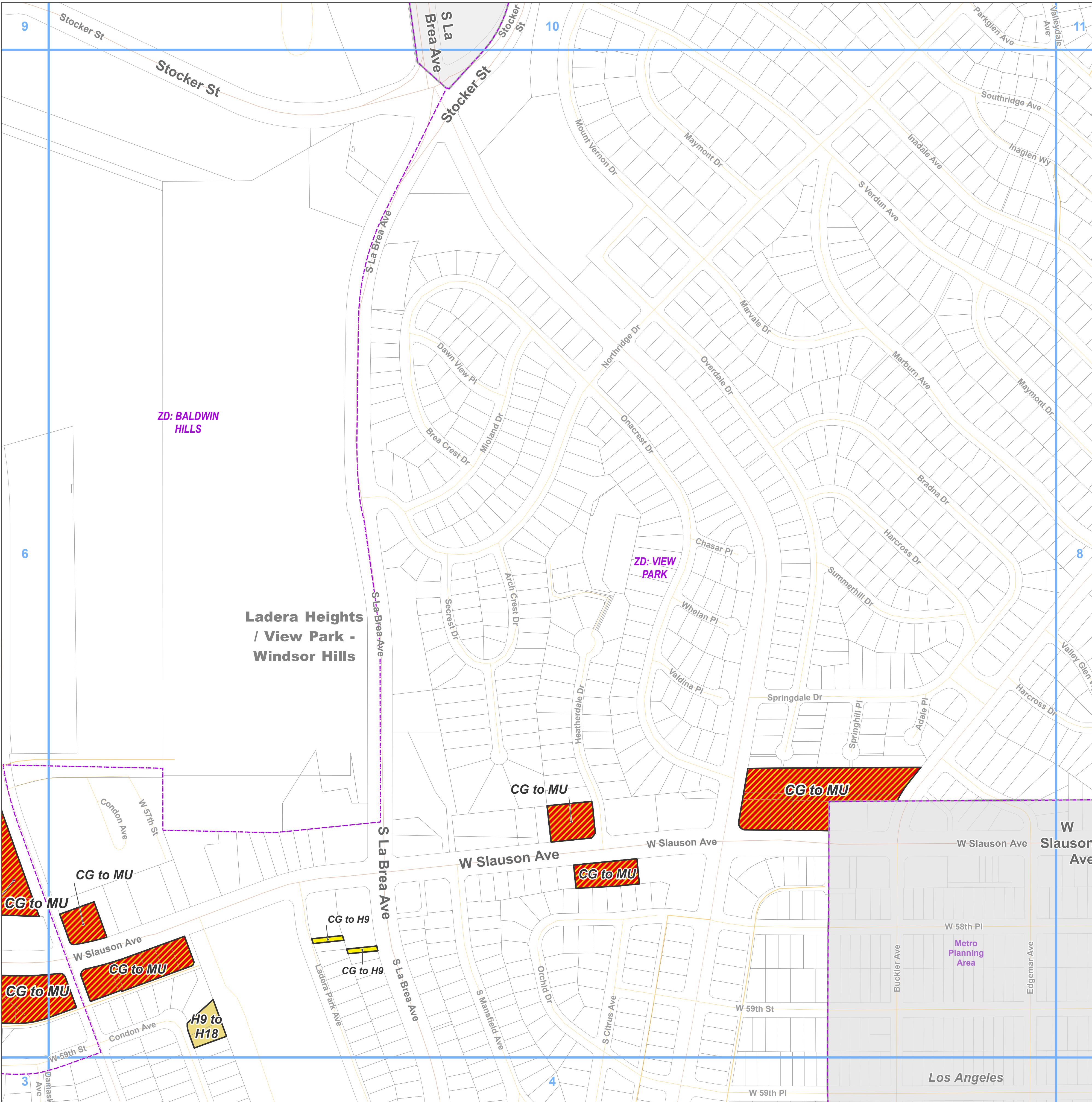
-  H9 - Residential 9
-  H18 - Residential 18
-  MU - Mixed Use

Base Layers

-  Zoned District
-  Parcels
-  Unincorporated Area
-  Incorporated City
-  Map Series Grid
-  Surrounding Planning Area

Street Types

-  Primary
-  Secondary
-  Minor
-  Alley



ZD: BALDWIN HILLS

ZD: VIEW PARK

Ladera Heights / View Park - Windsor Hills

CG to MU

CG to MU

W Slauson Ave

CG to MU

CG to MU

CG to MU

W Slauson Ave

CG to MU

H9 to H18

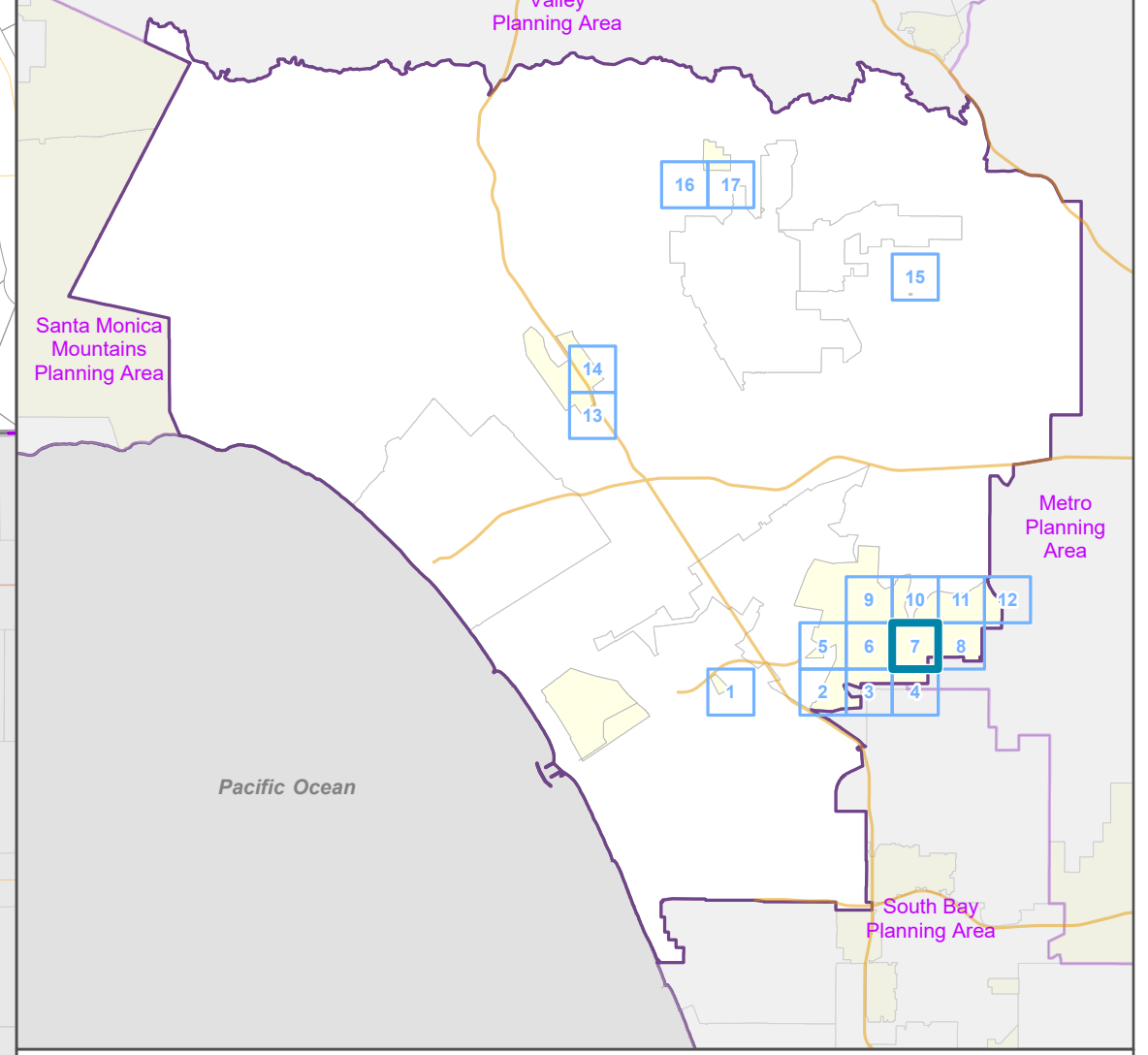
CG to H9

CG to H9

Metro Planning Area

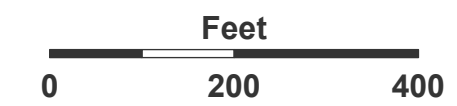
Los Angeles

Key Map



LA COUNTY
PLANNING

LOS ANGELES COUNTY
Dept. of Regional Planning
320 W. Temple St.
Los Angeles, CA 90012



Prepared by DRP GIS Section / September 2024

Westside Planning Area Land Use Policy Changes

Zoned District(s): View Park

Land Use Policy Change

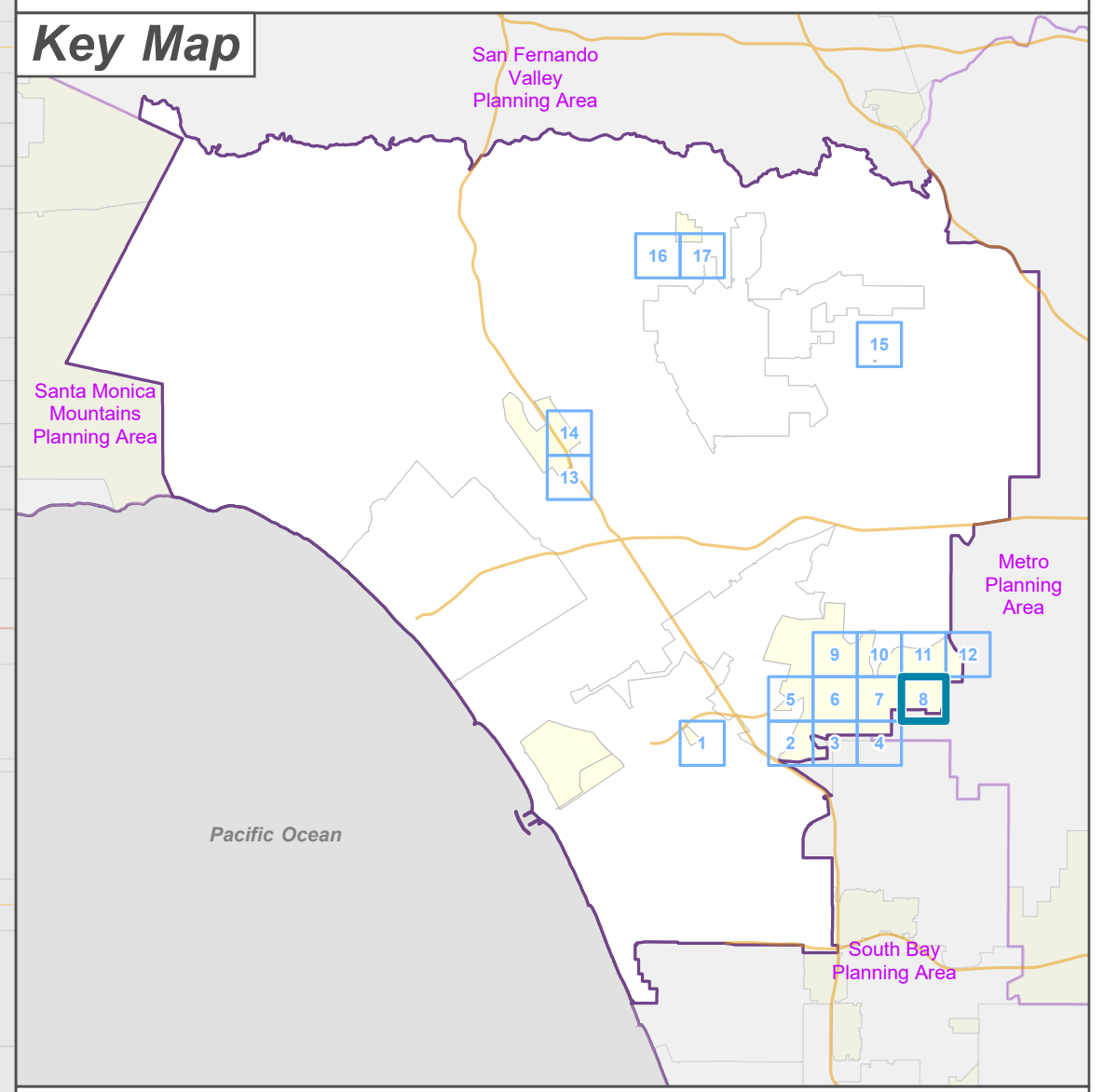
- H18 - Residential 18
- H30 - Residential 30
- MU - Mixed Use


Base Layers

- Zoned District
- Parcels
- Unincorporated Area
- Incorporated City
- Map Series Grid
- Surrounding Planning Area

Street Types

- Primary
- Secondary
- Minor
- Alley






**LA COUNTY
PLANNING**

LOS ANGELES COUNTY
Dept. of Regional Planning
320 W. Temple St.
Los Angeles, CA 90012

Feet

0 200 400




Prepared by DRP GIS Section / September 2024

Land Use Policy Change


 OS-C - Open Space - Conservation

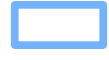
Base Layers

 Zoned District

 Parcels

 Unincorporated Area

 Incorporated City

 Map Series Grid

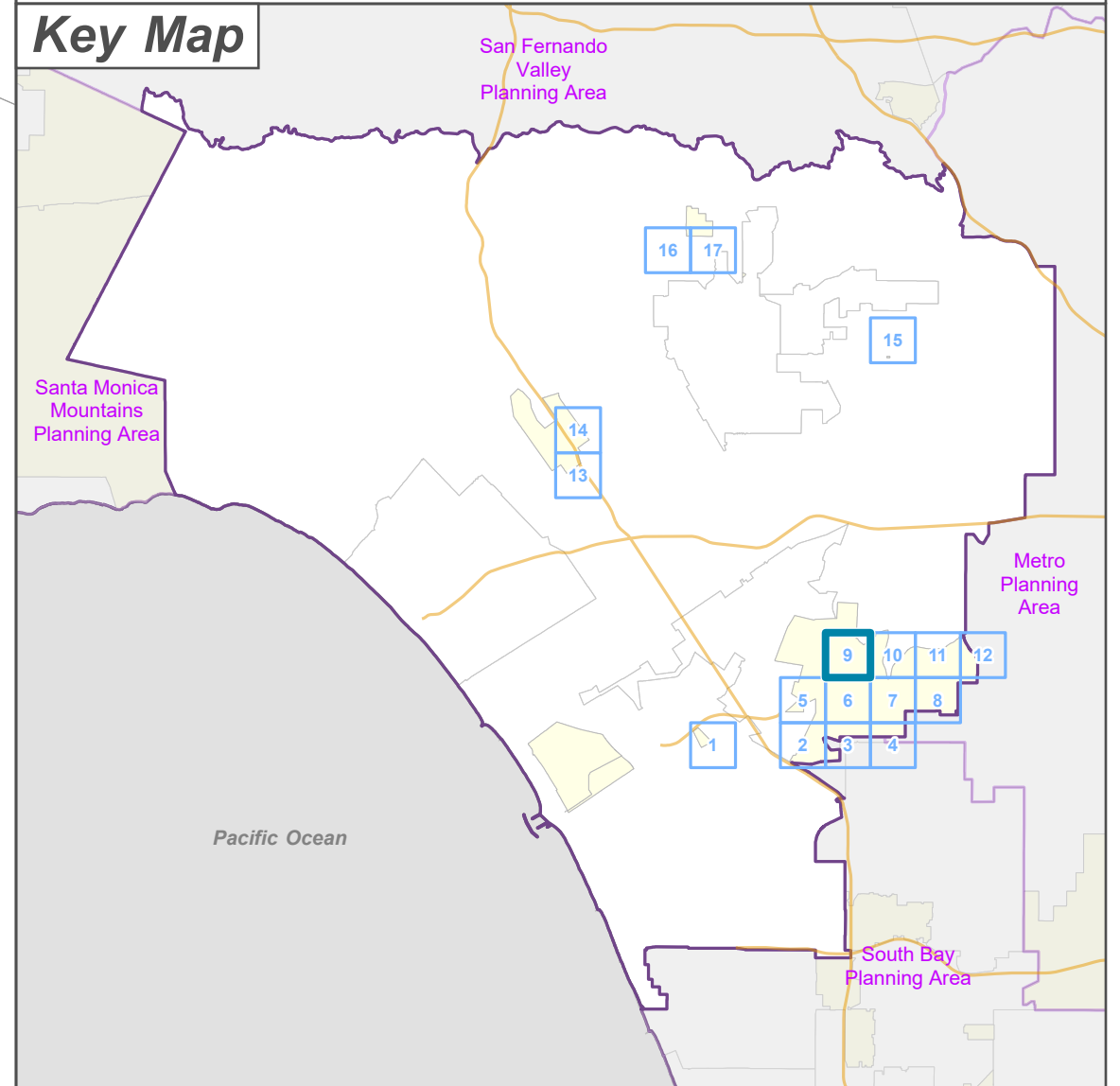
Street Types

 Primary

 Secondary

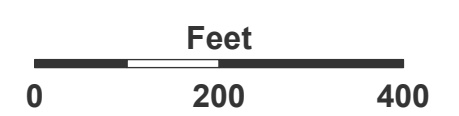
 Minor

Key Map



LA COUNTY
PLANNING

LOS ANGELES COUNTY
Dept. of Regional Planning
320 W. Temple St.
Los Angeles, CA 90012



Prepared by DRP GIS Section / September 2024




Westside Planning Area Land Use Policy Changes

Zoned District(s): Baldwin Hills,
View Park

Land Use Policy Change

 OS-PR - Open Space - Parks and Recreation

Base Layers

 Zoned District

 Parcels

 Unincorporated Area

 Incorporated City

 Map Series Grid

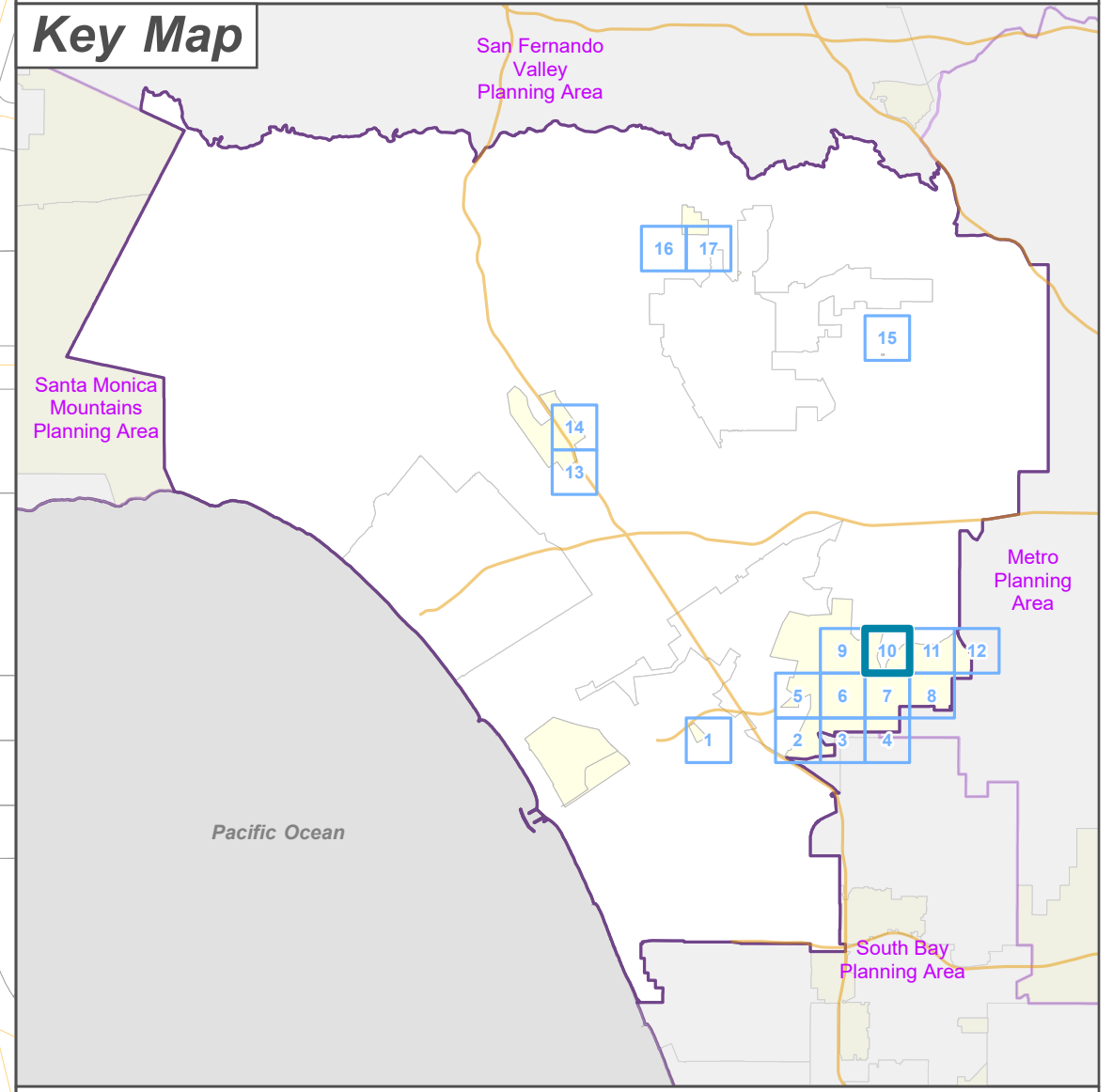
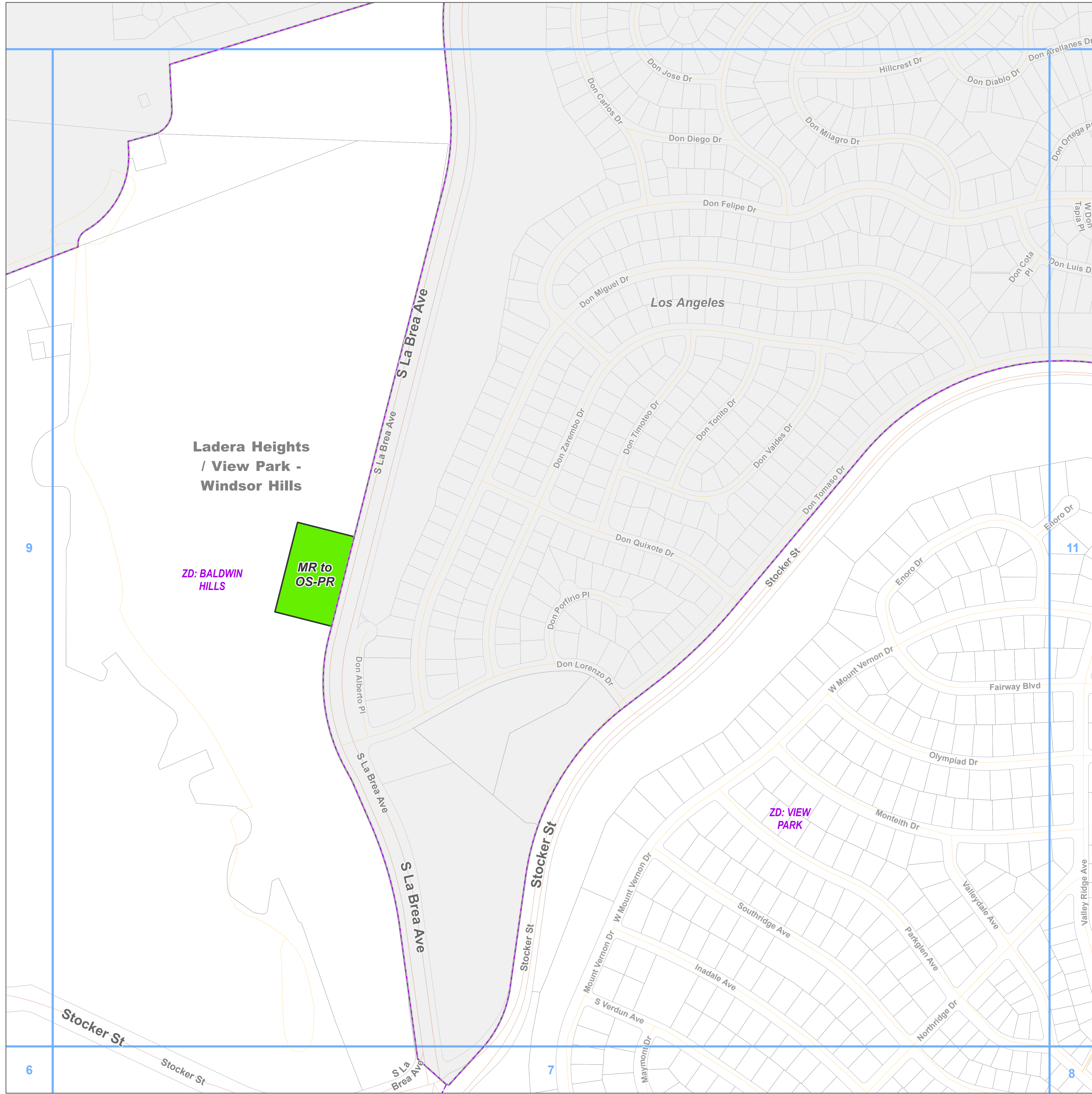
Street Types

 Primary

 Secondary

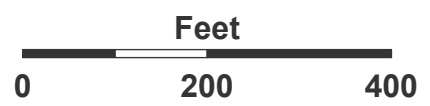
 Minor

 Alley



**LA COUNTY
PLANNING**

LOS ANGELES COUNTY
Dept. of Regional Planning
320 W. Temple St.
Los Angeles, CA 90012



Prepared by DRP GIS Section / September 2024

Land Use Policy Change

 H9 - Residential 9

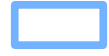
Base Layers

 Zoned District

 Parcels

 Unincorporated Area

 Incorporated City

 Map Series Grid

Street Types

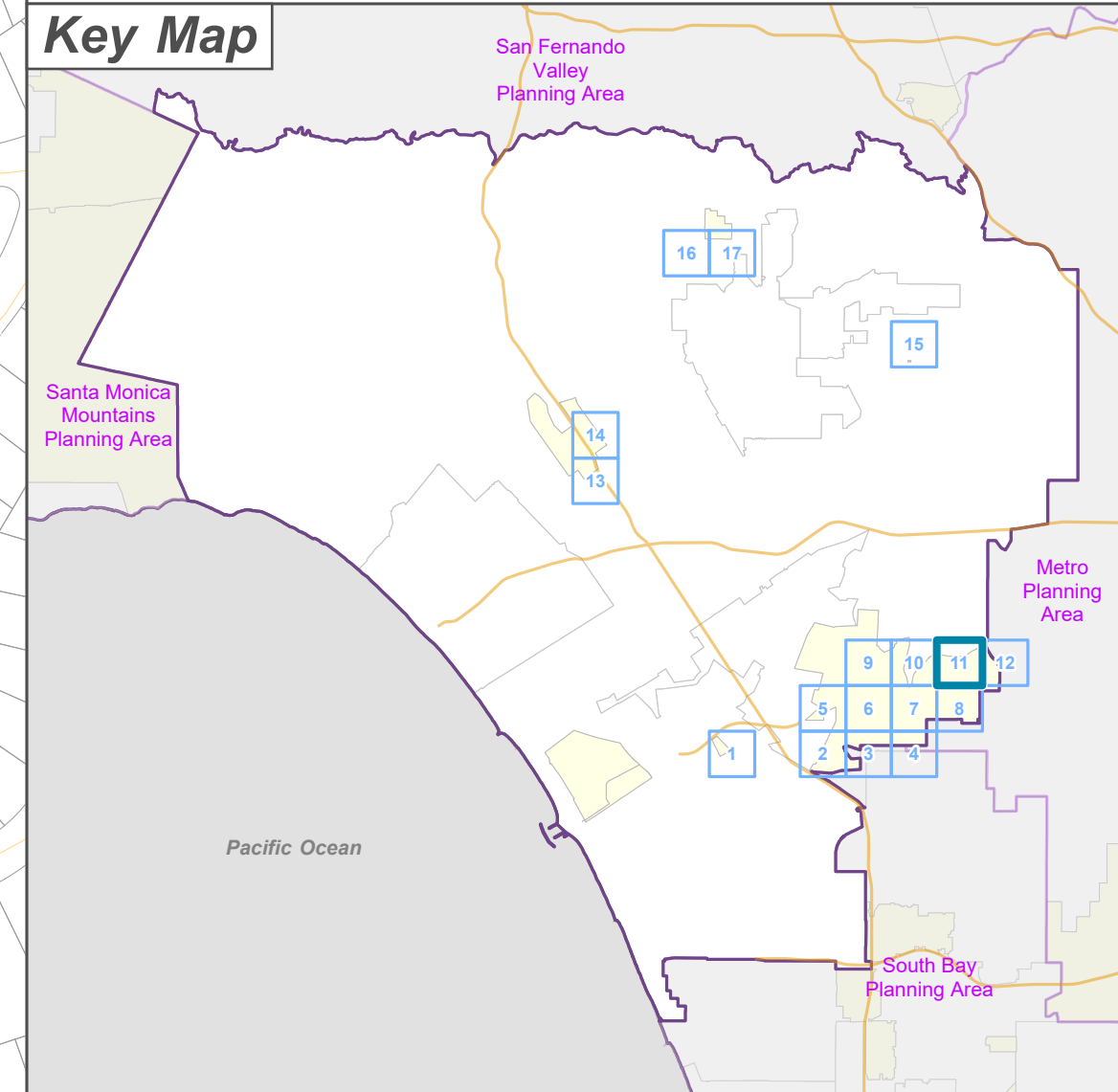
 Primary

 Secondary

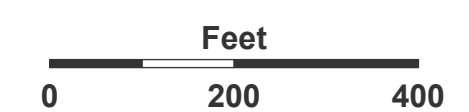
 Minor

 Alley

Key Map






LOS ANGELES COUNTY
Dept. of Regional Planning
320 W. Temple St.
Los Angeles, CA 90012







Westside Planning Area Land Use Policy Changes

Zoned District(s): View Park





Land Use Policy Change

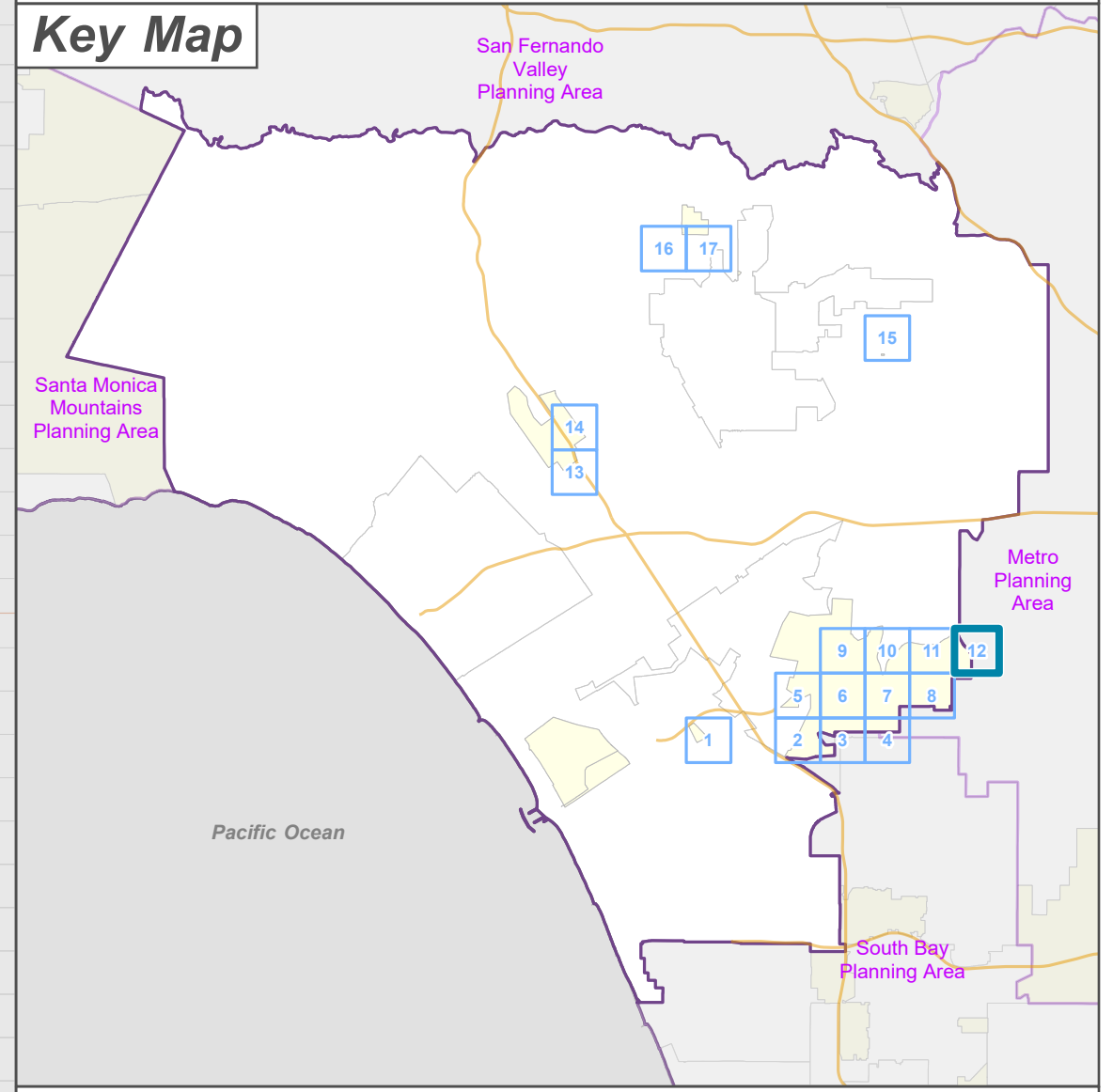
-  H18 - Residential 18
-  H30 - Residential 30
-  MU - Mixed Use

Base Layers

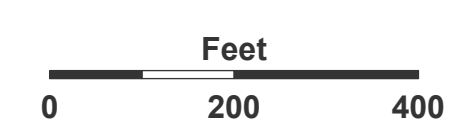
-  Zoned District
-  Parcels
-  Unincorporated Area
-  Incorporated City
-  Map Series Grid
-  Surrounding Planning Area

Street Types

-  Primary
-  Secondary
-  Minor
-  Alley



LOS ANGELES COUNTY
Dept. of Regional Planning
320 W. Temple St.
Los Angeles, CA 90012



Prepared by DRP GIS Section / September 2024

Westside Planning Area Land Use Policy Changes

Zoned District(s): Sawtelle

**West Los Angeles
(Sawtelle
Va) ZD: SAWTELLE**

Land Use Policy Change

 H50 - Residential 50

Base Layers

 Zoned District

 Parcels

 Unincorporated Area

 Incorporated City

 Map Series Grid

Street Types

 Freeway

 Highway

 Primary

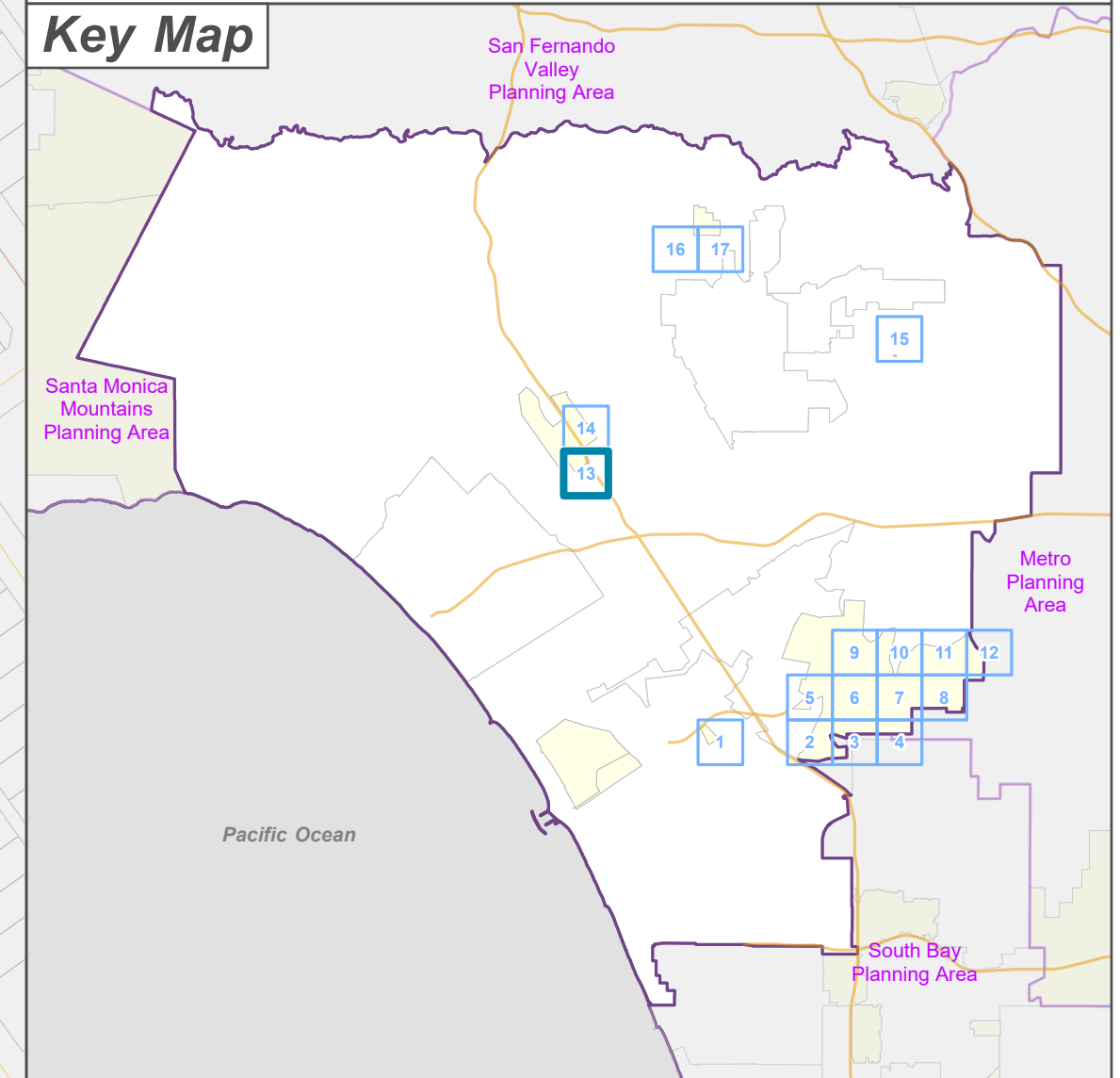
 Secondary

 Minor

 Ramp

 Alley

Key Map



**LA COUNTY
PLANNING**

LOS ANGELES COUNTY
Dept. of Regional Planning
320 W. Temple St.
Los Angeles, CA 90012



Prepared by DRP GIS Section / September 2024

Westside Planning Area Land Use Policy Changes

Zoned District(s): Sawtelle

Land Use Policy Change

 H50 - Residential 50


Base Layers

 Zoned District

 Parcels

 Unincorporated Area

 Incorporated City

 Map Series Grid

Street Types

 Freeway

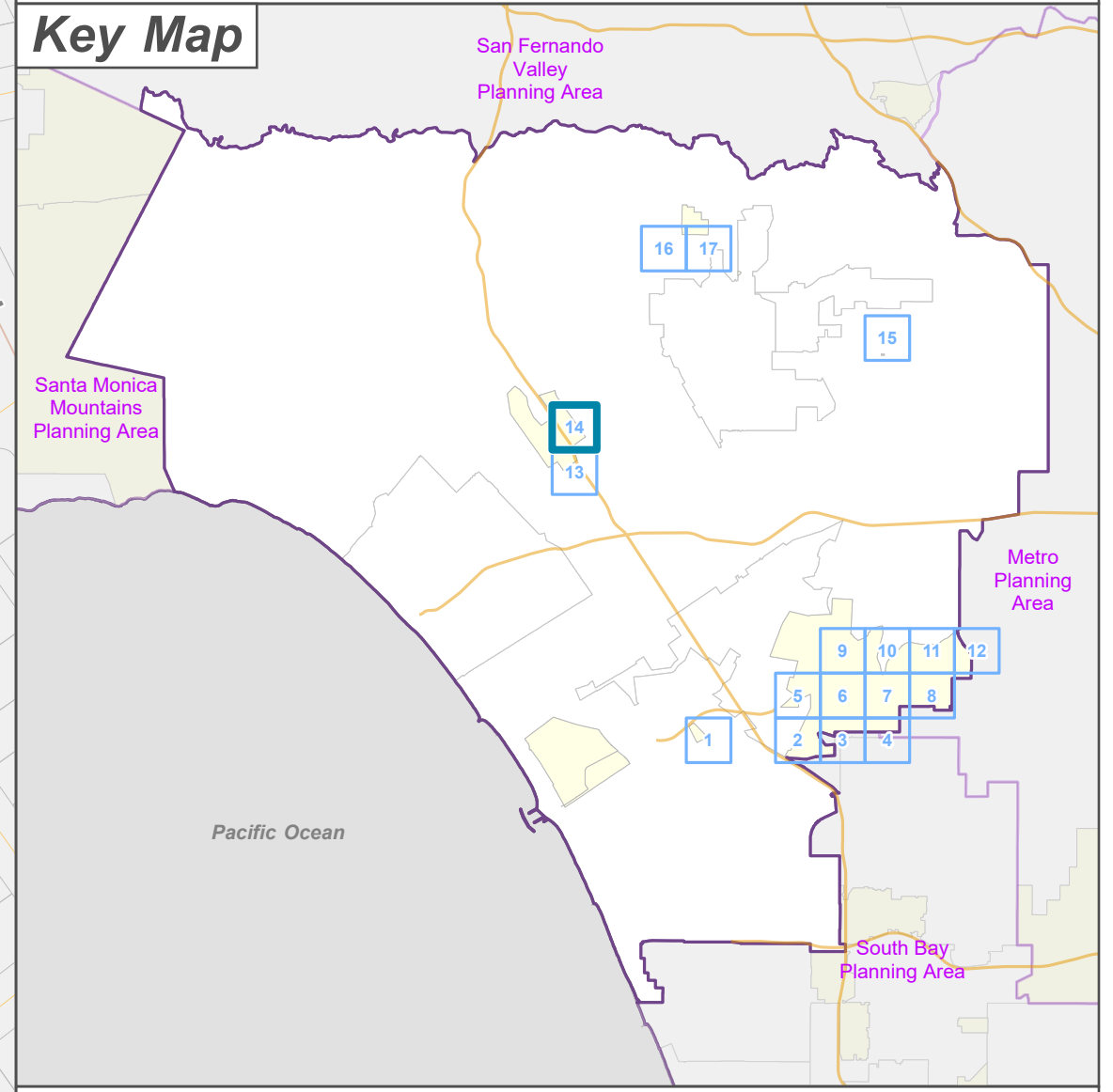
 Primary

 Secondary

 Minor

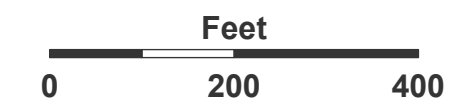
 Ramp

 Alley



LA COUNTY
PLANNING

LOS ANGELES COUNTY
Dept. of Regional Planning
320 W. Temple St.
Los Angeles, CA 90012



Prepared by DRP GIS Section / September 2024

Westside Planning Area Land Use Policy Changes

Zoned District(s): Gilmore Island

Land Use Policy Change

 MU - Mixed Use


Base Layers

 Zoned District

 Parcels

 Unincorporated Area

 Incorporated City

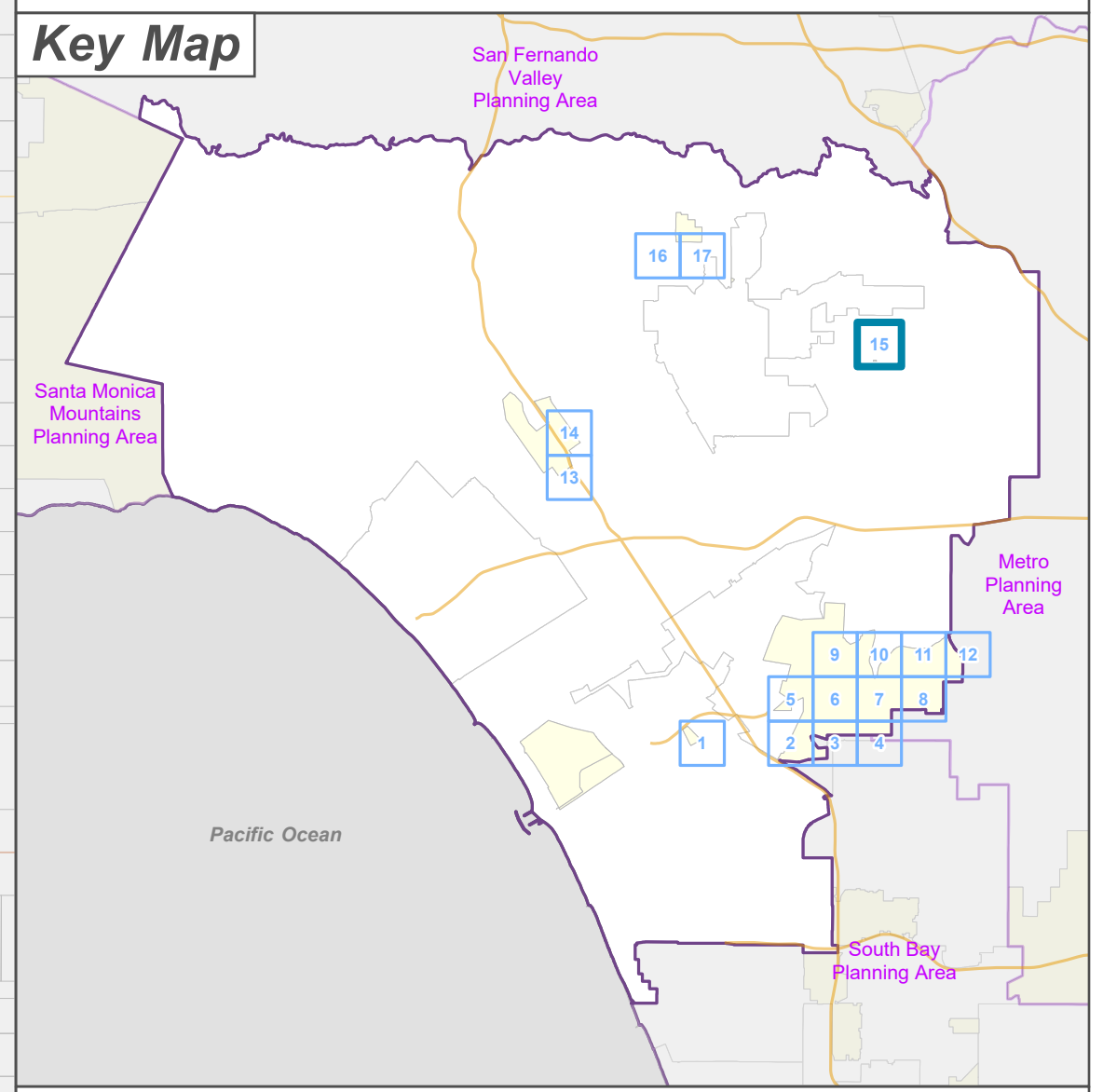
 Map Series Grid

Street Types

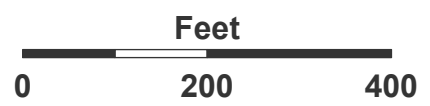
 Primary

 Secondary

 Minor



LOS ANGELES COUNTY
Dept. of Regional Planning
320 W. Temple St.
Los Angeles, CA 90012



Prepared by DRP GIS Section / September 2024

Franklin Canyon

Los Angeles County

**Westside Planning Area
Land Use Policy Changes**

Zoned District(s): Franklin Canyon

Land Use Policy Change

 H9 - Residential 9

Base Layers

 Zoned District

 Parcels

 Unincorporated Area

 Incorporated City

 Map Series Grid

Street Types

 Secondary

 Minor

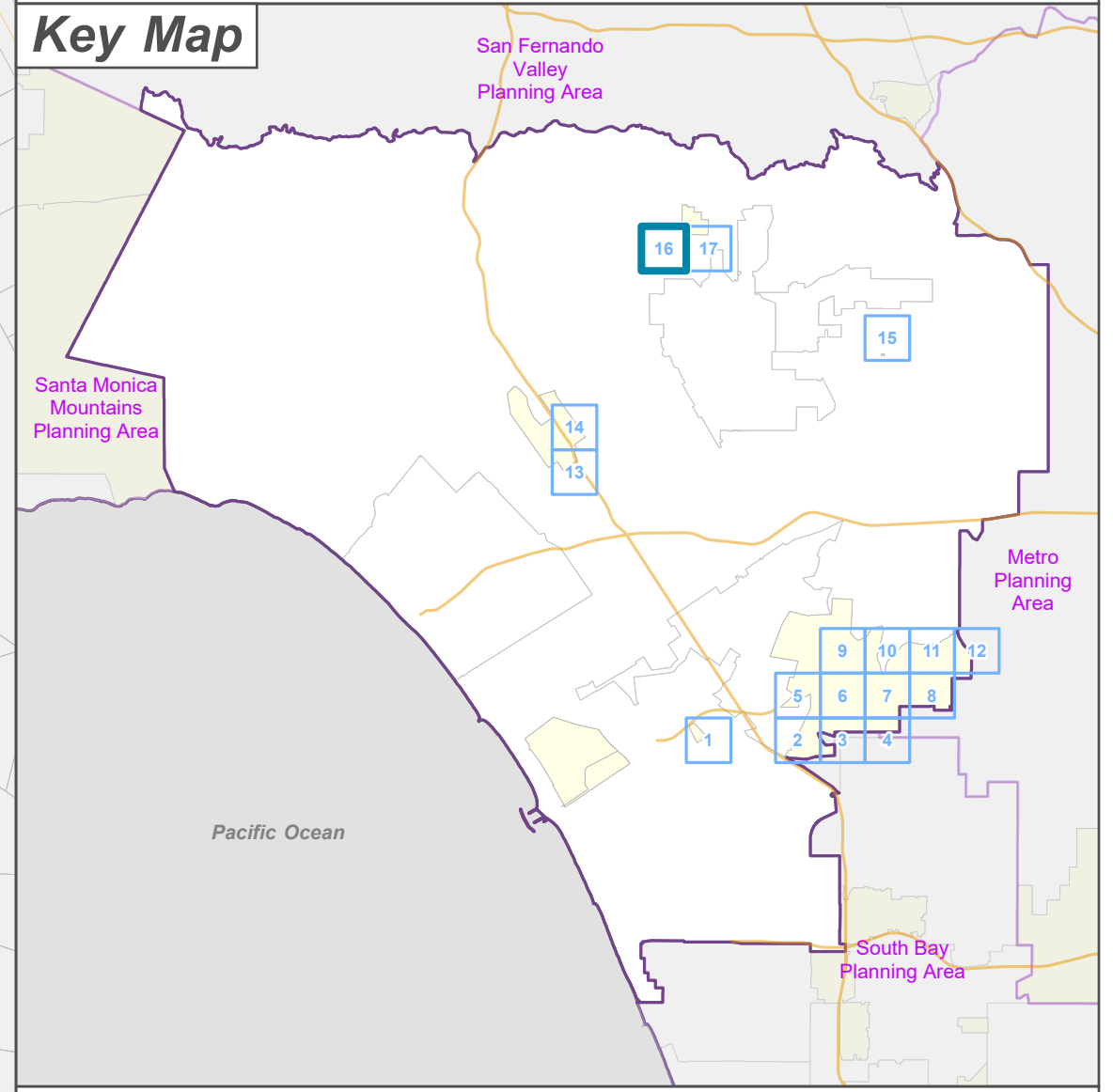
**OS-PR
to H9**

**ZD:
FRANKLIN
CANYON**

17

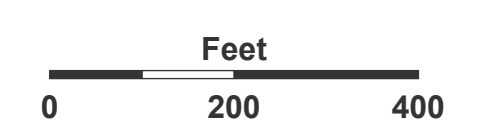
Los Angeles

Key Map



**LA COUNTY
PLANNING**

LOS ANGELES COUNTY
Dept. of Regional Planning
320 W. Temple St.
Los Angeles, CA 90012



Prepared by DRP GIS Section / September 2024

Westside Planning Area Land Use Policy Changes

Zoned District(s): Franklin Canyon

Land Use Policy Change

 H9 - Residential 9

Base Layers

 Zoned District

 Parcels

 Unincorporated Area

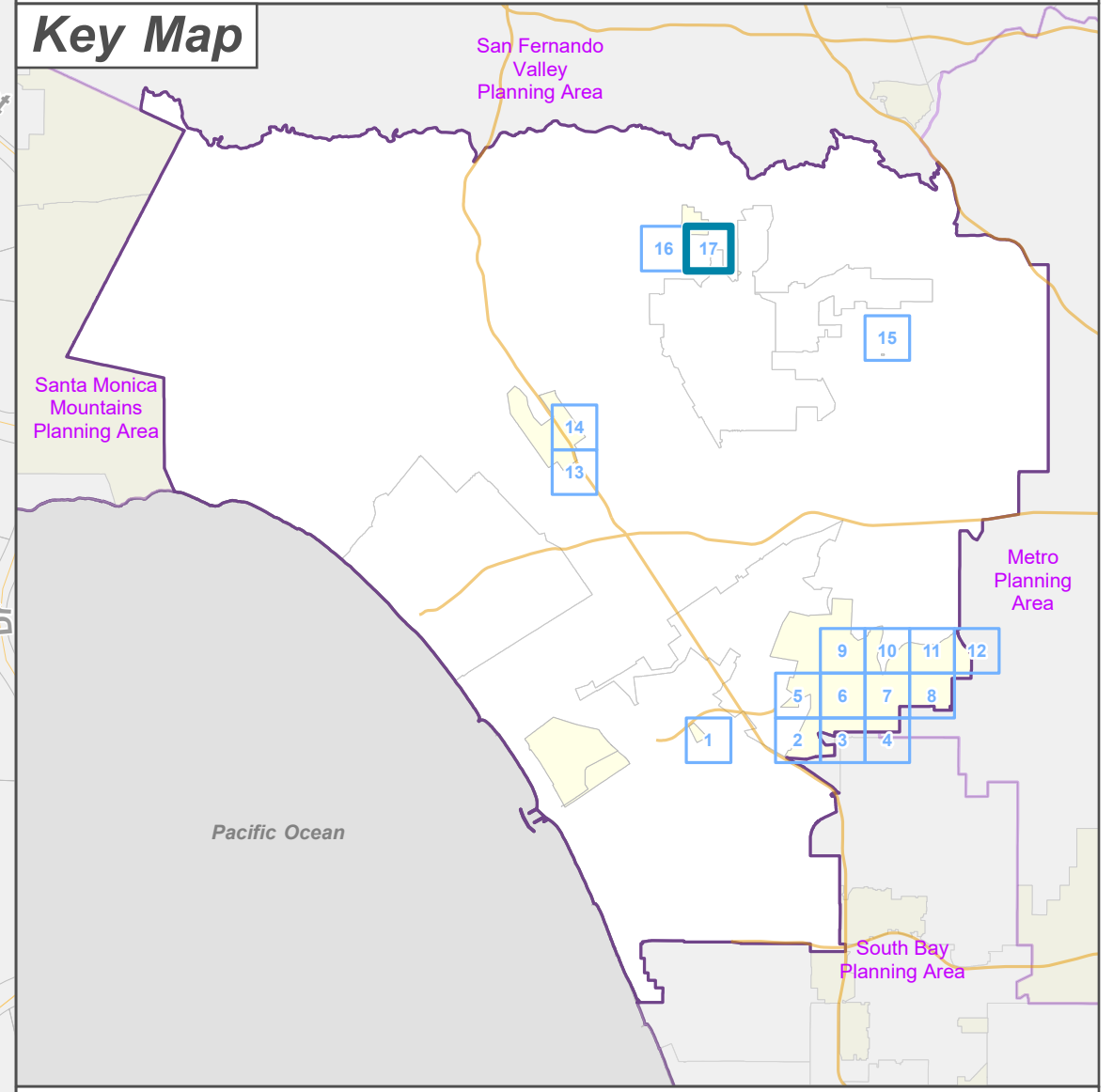
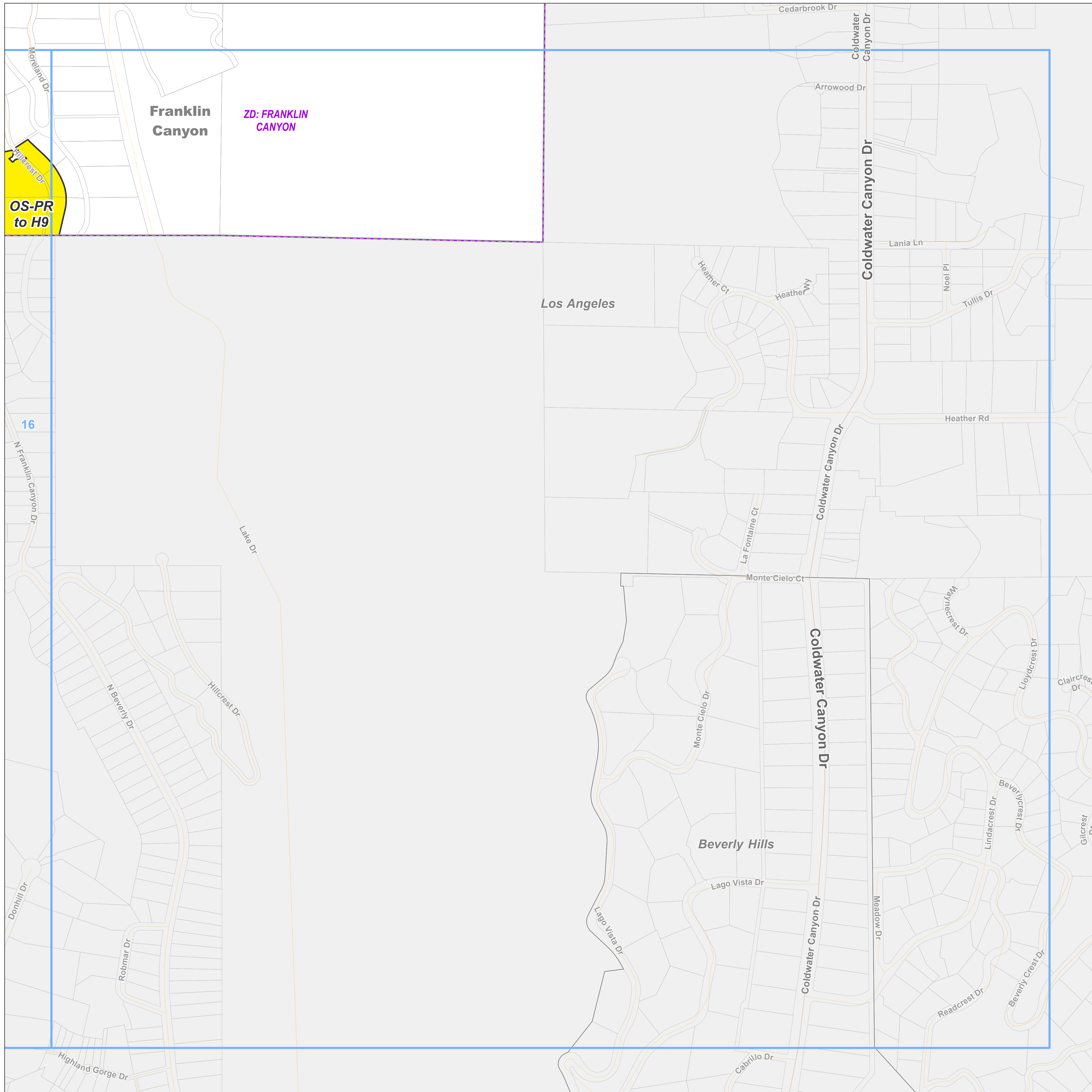
 Incorporated City

 Map Series Grid

Street Types

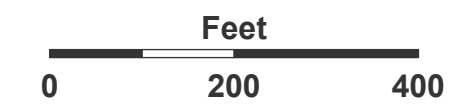
 Primary

 Minor



LA COUNTY
PLANNING

LOS ANGELES COUNTY
Dept. of Regional Planning
320 W. Temple St.
Los Angeles, CA 90012



Prepared by DRP GIS Section / September 2024