

# TROJAN SELF-STORAGE CALABASAS, CA

PROJECT DATA		SHEET INDEX	VICINITY MAP	
<b>SITE DATA:</b> SITE ADDRESS: 5050 OLD SCANDIA LANE CALABASAS, CA APN: 2049-022-040 ZONING: M2 PROPOSED USE: SELF STORAGE FACILITY PROPOSED OCCUPANCIES: B & S-1 PROPOSED CONST. TYPE: TYPE II-B		<b>OWNER / APPLICANT:</b> TROJAN STORAGE ADDRESS: 1732 AVIATION BLVD., SUITE 217 REDONDO BEACH, CA 90278 CONTACT: BRETT HENRY TELEPHONE: 310.862.6437 EMAIL: bhenry@trojanstorage.com <b>ARCHITECT:</b> JORDAN ARCHITECTS, INC. ADDRESS: 131 CALLE IGLESIA, SUITE 100 SAN CLEMENTE, CA 92673 CONTACT: BRUCE JORDAN TELEPHONE: 949-388-8090 EMAIL: bjordan@jordanarchitects.com <b>CIVIL ENGINEER:</b> ADAMS STREETER CIVIL ENGINEERS ADDRESS: 16755 VON KARMAN AVE, SUITE 150 IRVINE, CA 92606 CONTACT: FELIX GONZALEZ TELEPHONE: 949-474-2330 EMAIL: fgonzalez@adams-streeter.com	A0 COVER SHEET A1 SITE PLAN A2 BLDG. A BASEMENT FLOOR PLAN A3 BLDG. A 1ST FLOOR PLAN A4 BLDG. A 2ND FLOOR PLAN A5 BLDG. A 3RD FLOOR PLAN A6 BLDG. B BASEMENT FLOOR PLAN A7 BLDG. B 1ST FLOOR PLAN A8 BLDG. C BASEMENT FLOOR PLAN A9 BLDG. C 1ST FLOOR PLAN A10 BLDG. C LOCKER PLAN A11 BLDG. A ELEVATIONS A12 BLDG. B ELEVATIONS A13 BLDG. B ELEVATIONS A14 BLDG. C ELEVATION A15 OFFICE & ATTIC FLOOR PLANS A16 OFFICE ELEVATIONS A17 SITE PHOTOS A18 LAND USE MAP A19 CONCEPTUAL GRADING PLAN A20 FIRE ACCESS PLAN A21 PRESENTATION RENDERING	

## TROJAN STORAGE

1732 AVIATION BLVD., SUITE #217  
 REDONDO BEACH, CA 90278

## TROJAN CALABASAS LOS ANGELES COUNTY, CA

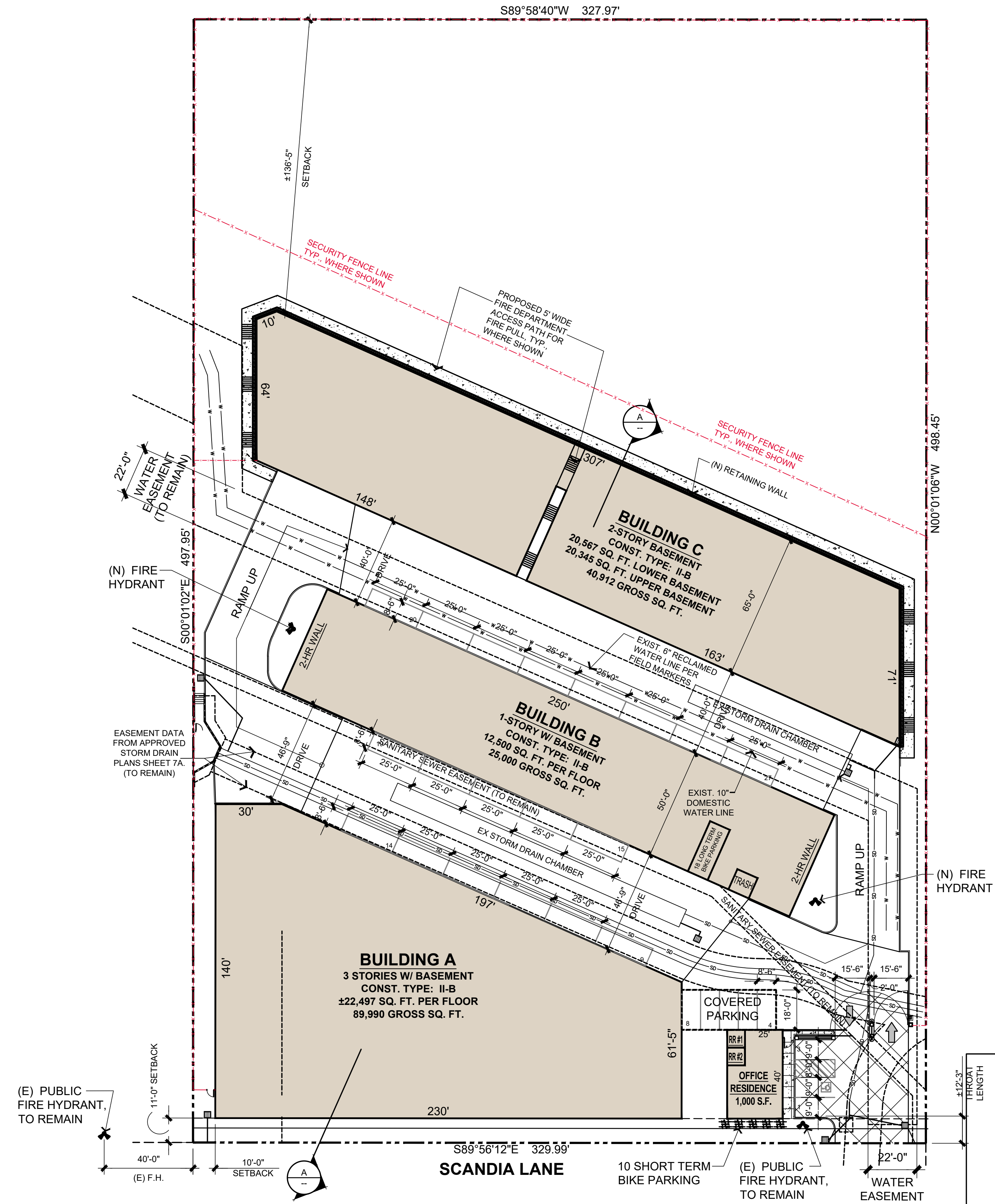
## COVER SHEET

THIS DRAWING AND ITS CONTENTS ARE INSTRUMENTS OF SERVICE AND ARE THE COPYRIGHTED PROPERTY OF JORDAN ARCHITECTS, INC. THE USE IS EXPRESSLY INTENDED FOR THE PROJECT NOTED ABOVE AND MAY NOT BE REUSED OR REPRODUCED IN WHOLE OR IN PART WITHOUT THE WRITTEN PERMISSION OF JORDAN ARCHITECTS, INC. "COPYRIGHT" YEAR OF FIRST PUBLICATION 2020 JORDAN ARCHITECTS, INC.

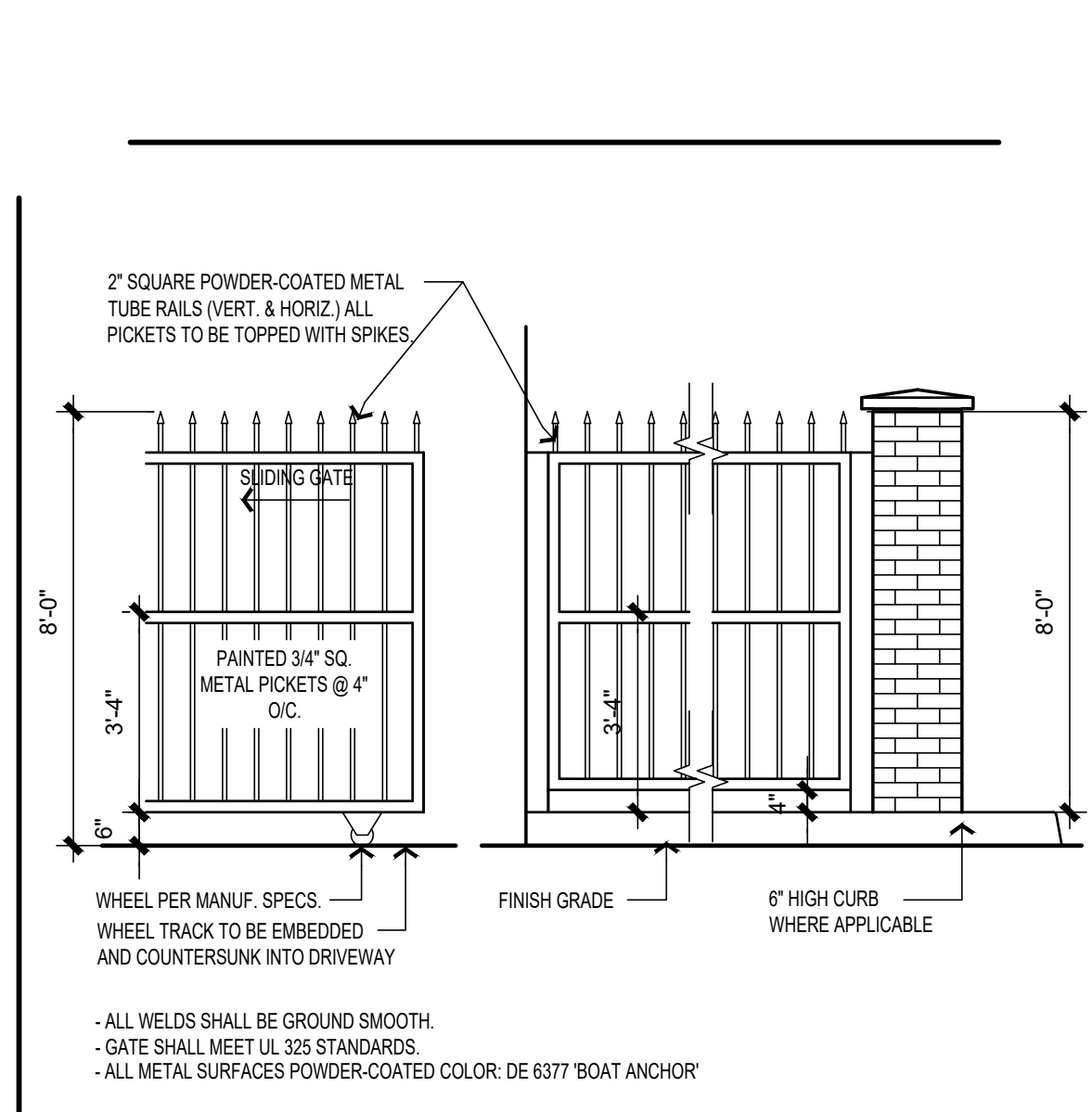
JOB NUMBER: 19-506  
 SCALE: N.T.S.  
 DATE: 03/24/2021

**JORDAN ARCHITECTS**  
 131 CALLE IGLESIA, SUITE 100  
 SAN CLEMENTE, CA 92672  
 949.388.8090

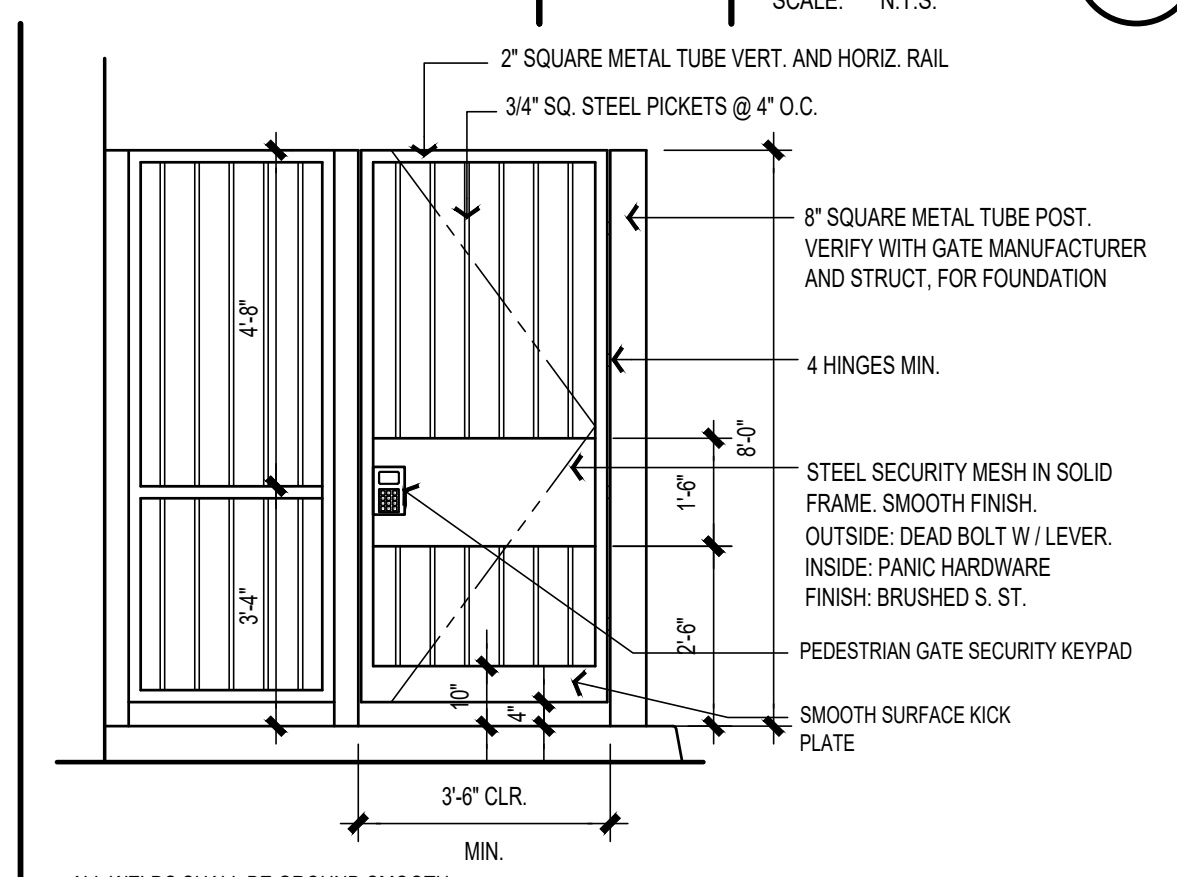
**SHEET A0**



**TROJAN STORAGE**  
 1732 AVIATION BLVD., SUITE #217  
 REDONDO BEACH, CA 90278  
**TROJAN CALABASAS**  
 LOS ANGELES COUNTY, CA

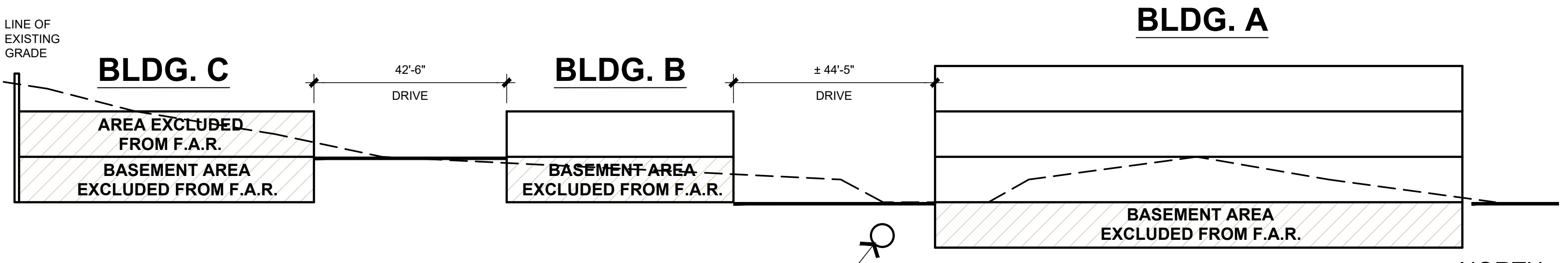


**TYPICAL GATE / FENCE**  
 SCALE: N.T.S.



**PEDESTRIAN GATE**  
 SCALE: 3/8"=1'-0"

SITE DATA			
APPLICANT INFORMATION:	TROJAN STORAGE 1732 AVIATION BLVD., SUITE #217 REDONDO BEACH, CA 90278 PH: (310) 372-8600 CONTACT: BRETT HENRY		
SITE ADDRESS:	5050 OLD SCANDIA LANE CALABASAS, CA		
ASSESSOR'S PARCEL NUMBER:	2049-022-040		
LOT AREA	164,220	SQ. FT.	
	3.77	ACRES	
TOTAL GROSS BLDG. AREA	156,638	SQ. FT.	
MAXIMUM F.A.R. = 0.500	82,110	SQ. FT.	
PROVIDED F.A.R. = 0.499	81,991	SQ. FT.	
TOTAL LOT COVERAGE	56,342 SQ. FT. (34.3% LOT COVERAGE)		
BUILDING AREA TABULATIONS ( Square Feet )			
BUILDINGS & FLOORS	SELF STORAGE	OFFICE	TOTAL
OFFICE - 1ST LEVEL (WITHIN F.A.R. CALCULATION)	0	1,000	1,000
RESIDENCE - 2ND LEVEL (WITHIN F.A.R. CALCULATION)	0	1,000	1,000
BLDG. A - BASEMENT LEVEL	22,497	0	22,497
BLDG. A - 1ST LEVEL (WITHIN F.A.R. CALCULATION)	22,497	0	22,497
BLDG. A - 2ND LEVEL (WITHIN F.A.R. CALCULATION)	22,497	0	22,497
BLDG. A - 3RD LEVEL (WITHIN F.A.R. CALCULATION)	22,497	0	22,497
BLDG. B - BASEMENT LEVEL	12,500	0	12,500
BLDG. B - 1ST LEVEL (WITHIN F.A.R. CALCULATION)	12,500	0	12,500
BLDG. C - LOWER BASEMENT LEVEL	20,567	0	20,567
BLDG. C - UPPER BASEMENT LEVEL	20,345	0	20,345
TOTAL GROSS AREA:	155,900	2,000	157,900
TOTAL CALCULABLE F.A.R. =-	79,991	2,000	81,991
EST. NET STORAGE AREA @ 78% = ±122,400			
PARKING REQUIREMENTS			
REQUIRED PARKING CALCULATION	GROSS AREA SQ. FT.	DIVISOR	TOTAL SPACES
1 STANDARD VEHICULAR SPACE PER 7,000 S.F. OF GROSS FLOOR AREA	157,900	7,000	23
3 VEHICULAR SPACES FOR OFFICE			5
2 VEHICULAR SPACES FOR RESIDENCE			2
TOTAL NUMBER OF REQUIRED VEHICULAR PARKING SPACES =			28
TOTAL PROVIDED VEHICULAR PARKING SPACES =			27
1 SHORT TERM BICYCLE SPACE PER 20,000 S.F. OF INDUSTRIAL USE	157,900	20,000	8
1 LONG TERM BICYCLE SPACE PER 10,000 S.F. OF INDUSTRIAL USE	157,900	10,000	16
SHORT TERM BICYCLE PARKING STALLS FOR RESIDENTIAL USE			2
LONG TERM BICYCLE PARKING STALLS FOR RESIDENTIAL USE			2
TOTAL NUMBER OF SHORT TERM BICYCLE PARKING =			10
TOTAL NUMBER OF LONG TERM BICYCLE PARKING =			18
BUILDING CONSTRUCTION TYPE: IIB OCCUPANCY CLASSIFICATION: S-1 BUILDINGS ARE EQUIPPED THROUGHOUT WITH AUTOMATIC FIRE SPRINKLER SYSTEM IN ACCORDANCE WITH NFPA 13.			



**SITE SECTION A-A**

**NOTE:**  
 PER SECTION 22.122.100.C OF LOS ANGELES COUNTY MUNICIPAL CODE, REQUIRED SHOWER FACILITIES LOCATED WITHIN THE MANAGER'S UNIT ARE TO BE IDENTIFIED AS AVAILABLE FOR EMPLOYEE USE.

**SCHEME D**  
**PRELIMINARY SITE PLAN**

THIS DRAWING AND ITS CONTENTS ARE INSTRUMENTS OF SERVICE AND ARE THE COPYRIGHTED PROPERTY OF JORDAN ARCHITECTS, INC. THE USE IS EXPRESSLY INTENDED FOR THE PROJECT NOTED ABOVE AND MAY NOT BE REUSED OR REPRODUCED IN WHOLE OR IN PART WITHOUT THE WRITTEN PERMISSION OF JORDAN ARCHITECTS, INC. "COPYRIGHT" YEAR OF FIRST PUBLICATION 2020 JORDAN ARCHITECTS, INC.

JOB NUMBER: 19-506  
 SCALE: 1"=30'-0"  
 DATE: 06/13/2024

*ja*  
**JORDAN ARCHITECTS**  
 131 CALLE IGLESIA, SUITE 100  
 SAN CLEMENTE, CA 92672  
 949.388.8090

SITE DATA	
APPLICANT INFORMATION:	TROJAN STORAGE 1732 AVIATION BLVD., SUITE #217 REDONDO BEACH, CA 90278 PH: (310) 372-8600 CONTACT: BRETT HENRY
SITE ADDRESS:	5050 OLD SCANDIA LANE CALABASAS, CA
ASSESSOR'S PARCEL NUMBER:	2049-022-040



# TROJAN STORAGE

1732 AVIATION BLVD., SUITE #217  
REDONDO BEACH, CA 90278

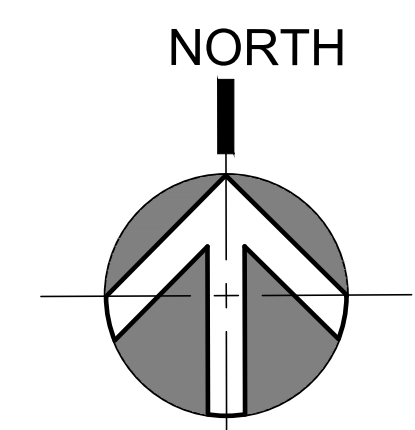
# TROJAN CALABASAS

## LOS ANGELES COUNTY, CA

# BLDG A - BASEMENT

THIS DRAWING AND ITS CONTENTS ARE INSTRUMENTS OF SERVICE AND ARE THE COPYRIGHTED PROPERTY OF JORDAN ARCHITECTS, INC. THE USE IS EXPRESSLY INTENDED FOR THE PROJECT NOTED ABOVE AND MAY NOT BE REUSED OR REPRODUCED IN WHOLE OR IN PART WITHOUT THE WRITTEN PERMISSION OF JORDAN ARCHITECTS, INC. "COPYRIGHT" YEAR OF FIRST PUBLICATION 2020 JORDAN ARCHITECTS, INC.

JOB NUMBER: 19-506  
SCALE: 3/32" = 1'-0"  
DATE: 03/24/2021



**JORDAN ARCHITECTS**  
131 CALLE IGLESIA, SUITE 100  
SAN CLEMENTE, CA 92672  
949.388.8090

## SHEET A2



SITE DATA	
APPLICANT INFORMATION:	TROJAN STORAGE 1732 AVIATION BLVD., SUITE #217 REDONDO BEACH, CA 90278 PH: (310) 372-8600 CONTACT: BRETT HENRY
SITE ADDRESS:	5050 OLD SCANDIA LANE CALABASAS, CA
ASSESSOR'S PARCEL NUMBER:	2049-022-040



# TROJAN STORAGE

1732 AVIATION BLVD., SUITE #217  
REDONDO BEACH, CA 90278

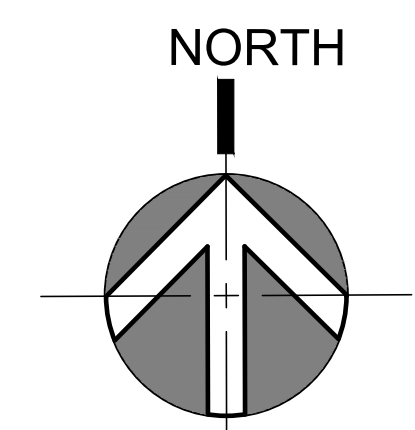
# TROJAN CALABASAS

## LOS ANGELES COUNTY, CA

# BLDG A - 2ND FLOOR

THIS DRAWING AND ITS CONTENTS ARE INSTRUMENTS OF SERVICE AND ARE THE COPYRIGHTED PROPERTY OF JORDAN ARCHITECTS, INC. THE USE IS EXPRESSLY INTENDED FOR THE PROJECT NOTED ABOVE AND MAY NOT BE REUSED OR REPRODUCED IN WHOLE OR IN PART WITHOUT THE WRITTEN PERMISSION OF JORDAN ARCHITECTS, INC. "COPYRIGHT" YEAR OF FIRST PUBLICATION 2020 JORDAN ARCHITECTS, INC.

JOB NUMBER: 19-506  
SCALE: 3/32" = 1'-0"  
DATE: 03/24/2021



JORDAN  
ARCHITECTS  
131 CALLE IGLESIA, SUITE 100  
SAN CLEMENTE, CA 92672  
949.388.8090

# SHEET A4

SITE DATA	
APPLICANT INFORMATION:	TROJAN STORAGE 1732 AVIATION BLVD., SUITE #217 REDONDO BEACH, CA 90278 PH: (310) 372-8600 CONTACT: BRETT HENRY
SITE ADDRESS:	5050 OLD SCANDIA LANE CALABASAS, CA
ASSESSOR'S PARCEL NUMBER:	2049-022-040



# TROJAN STORAGE

1732 AVIATION BLVD., SUITE #217  
REDONDO BEACH, CA 90278

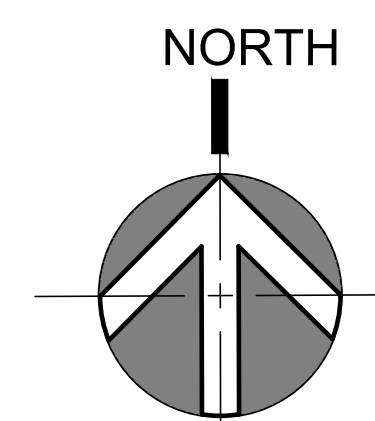
# TROJAN CALABASAS

## LOS ANGELES COUNTY, CA

# BLDG A - 3RD FLOOR

THIS DRAWING AND ITS CONTENTS ARE INSTRUMENTS OF SERVICE AND ARE THE COPYRIGHTED PROPERTY OF JORDAN ARCHITECTS, INC. THE USE IS EXPRESSLY INTENDED FOR THE PROJECT NOTED ABOVE AND MAY NOT BE REUSED OR REPRODUCED IN WHOLE OR IN PART WITHOUT THE WRITTEN PERMISSION OF JORDAN ARCHITECTS, INC. COPYRIGHT YEAR OF FIRST PUBLICATION 2020 JORDAN ARCHITECTS, INC.

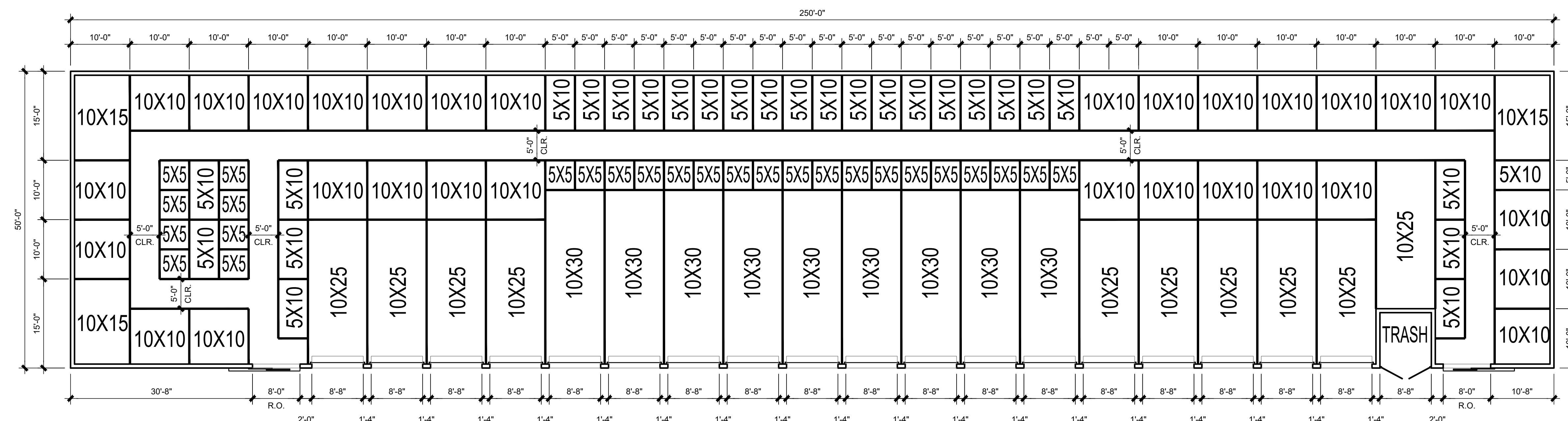
JOB NUMBER: 19-506  
SCALE: 3/32" = 1'-0"  
DATE: 03/24/2021



*ja*  
**JORDAN ARCHITECTS**  
 131 CALLE IGLESIA, SUITE 100  
 SAN CLEMENTE, CA 92672  
 949.388.8090

## SHEET A5

SITE DATA	
APPLICANT INFORMATION:	TROJAN STORAGE 1732 AVIATION BLVD., SUITE #217 REDONDO BEACH, CA 90278 PH: (310) 372-8600 CONTACT: BRETT HENRY
SITE ADDRESS:	5050 OLD SCANDIA LANE CALABASAS, CA
ASSESSOR'S PARCEL NUMBER:	2049-022-040



# TROJAN STORAGE

1732 AVIATION BLVD., SUITE #217  
REDONDO BEACH, CA 90278

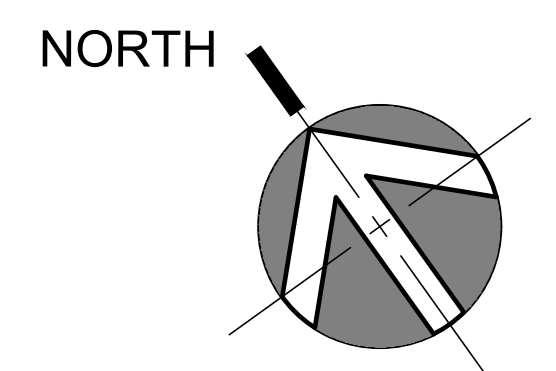
# TROJAN CALABASAS

## LOS ANGELES COUNTY, CA

# BLDG B - BASEMENT

THIS DRAWING AND ITS CONTENTS ARE INSTRUMENTS OF SERVICE AND ARE THE COPYRIGHTED PROPERTY OF JORDAN ARCHITECTS, INC. THE USE IS EXPRESSLY INTENDED FOR THE PROJECT NOTED ABOVE AND MAY NOT BE REUSED OR REPRODUCED IN WHOLE OR IN PART WITHOUT THE WRITTEN PERMISSION OF JORDAN ARCHITECTS, INC. ©COPYRIGHT YEAR OF FIRST PUBLICATION 2020 JORDAN ARCHITECTS, INC.

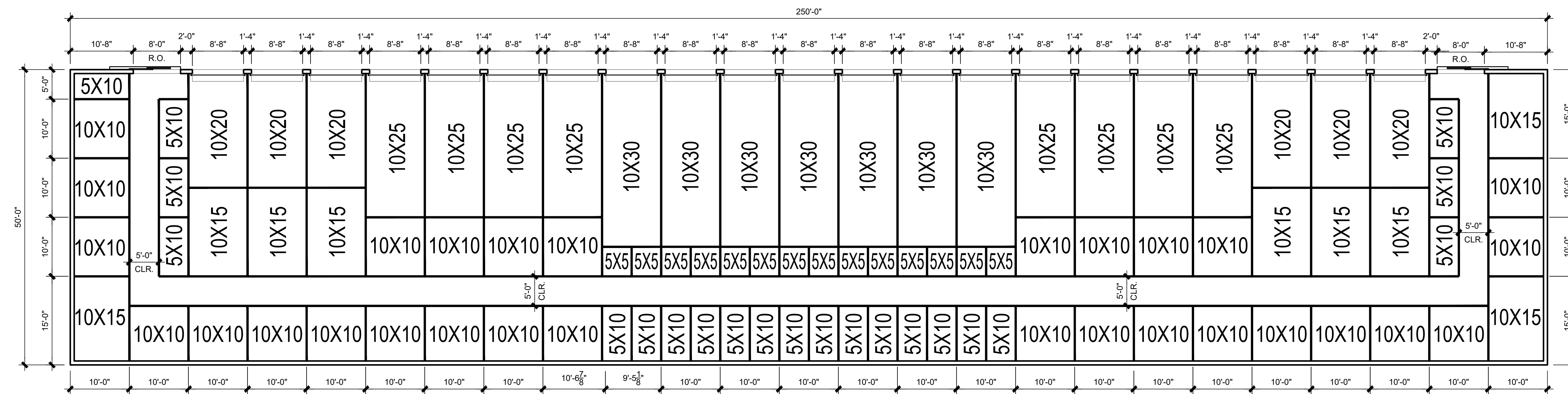
JOB NUMBER: 19-506  
SCALE: 3/32" = 1'-0"  
DATE: 03/24/2021



*ja*  
**JORDAN ARCHITECTS**  
131 CALLE IGLESIA, SUITE 100  
SAN CLEMENTE, CA 92672  
949.388.8090

# SHEET A6

SITE DATA	
APPLICANT INFORMATION:	TROJAN STORAGE 1732 AVIATION BLVD., SUITE #217 REDONDO BEACH, CA 90278 PH: (310) 372-8600 CONTACT: BRETT HENRY
SITE ADDRESS:	5050 OLD SCANDIA LANE CALABASAS, CA
ASSESSOR'S PARCEL NUMBER:	2049-022-040



# TROJAN STORAGE

1732 AVIATION BLVD., SUITE #217  
REDONDO BEACH, CA 90278

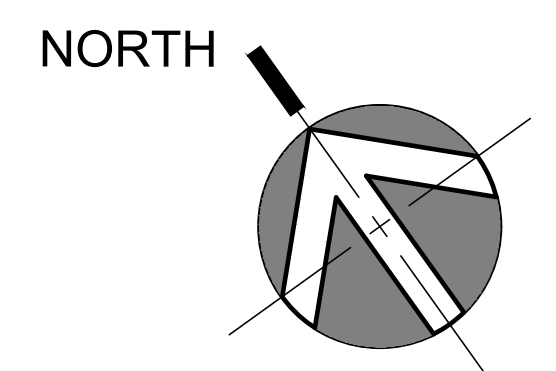
# TROJAN CALABASAS

## LOS ANGELES COUNTY, CA

# BLDG B - 1ST FLOOR

THIS DRAWING AND ITS CONTENTS ARE INSTRUMENTS OF SERVICE AND ARE THE COPYRIGHTED PROPERTY OF JORDAN ARCHITECTS, INC. THE USE IS EXPRESSLY INTENDED FOR THE PROJECT NOTED ABOVE AND MAY NOT BE REUSED OR REPRODUCED IN WHOLE OR IN PART WITHOUT THE WRITTEN PERMISSION OF JORDAN ARCHITECTS, INC. "COPYRIGHT" YEAR OF FIRST PUBLICATION 2020 JORDAN ARCHITECTS, INC.

JOB NUMBER: 19-506  
SCALE: 3/32" = 1'-0"  
DATE: 03/24/2021

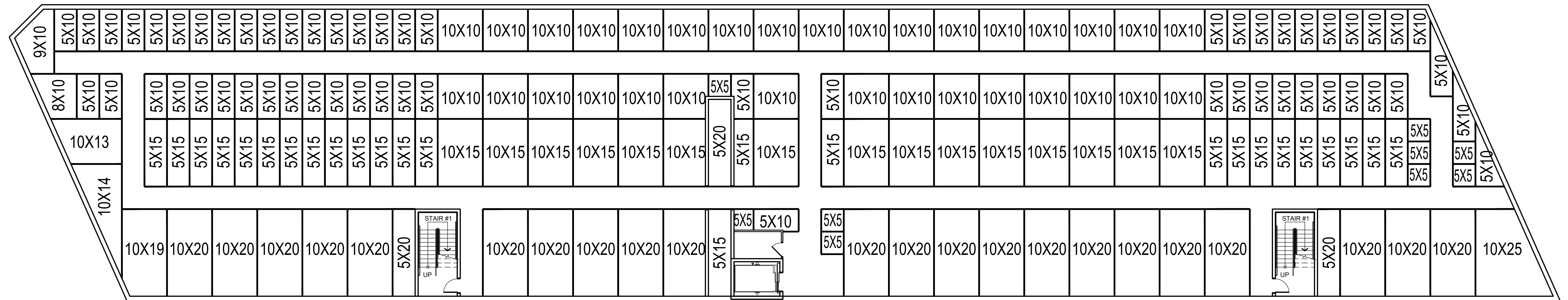


*ja*  
**JORDAN ARCHITECTS**  
131 CALLE IGLESIA, SUITE 100  
SAN CLEMENTE, CA 92672  
949.388.8090

# SHEET A7



SITE DATA	
APPLICANT INFORMATION:	TROJAN STORAGE 1732 AVIATION BLVD., SUITE #217 REDONDO BEACH, CA 90278 PH: (310) 372-8600 CONTACT: BRETT HENRY
SITE ADDRESS:	5050 OLD SCANDIA LANE CALABASAS, CA
ASSESSOR'S PARCEL NUMBER:	2049-022-040



# TROJAN STORAGE

1732 AVIATION BLVD., SUITE #217  
REDONDO BEACH, CA 90278

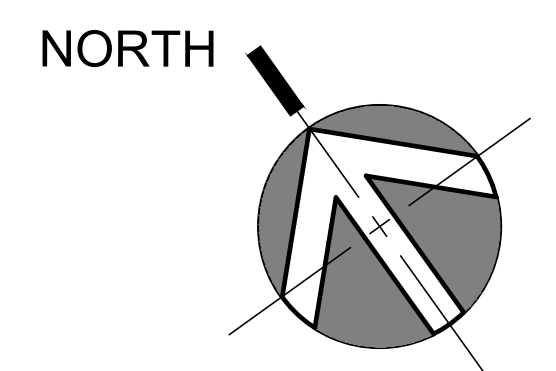
# TROJAN CALABASAS

## LOS ANGELES COUNTY, CA

# BLDG C - LOWER BASEMENT

THIS DRAWING AND ITS CONTENTS ARE INSTRUMENTS OF SERVICE AND ARE THE COPYRIGHTED PROPERTY OF JORDAN ARCHITECTS, INC. THE USE IS EXPRESSLY INTENDED FOR THE PROJECT NOTED ABOVE AND MAY NOT BE REUSED OR REPRODUCED IN WHOLE OR IN PART WITHOUT THE WRITTEN PERMISSION OF JORDAN ARCHITECTS, INC. ©COPYRIGHT YEAR OF FIRST PUBLICATION 2020 JORDAN ARCHITECTS, INC.

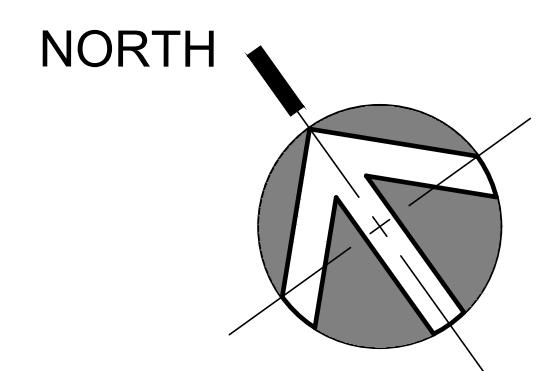
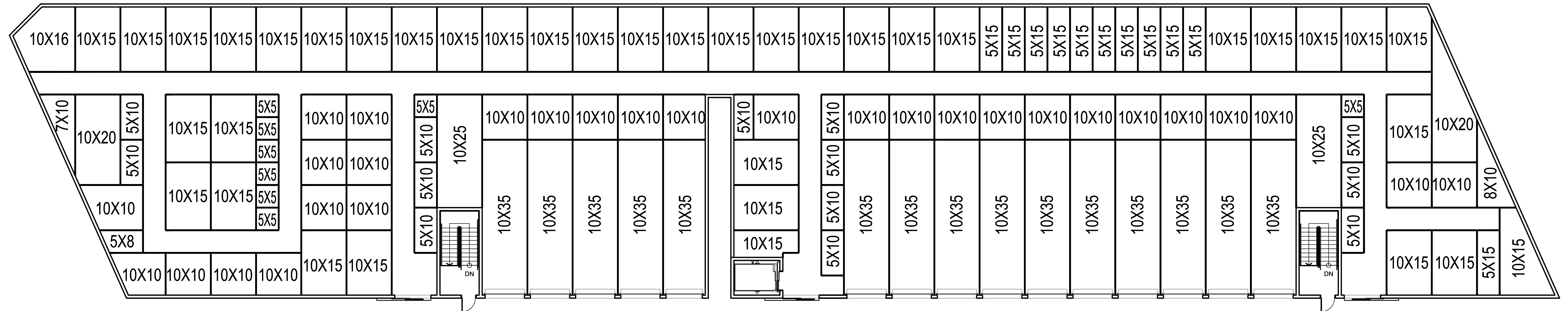
JOB NUMBER: 19-506  
SCALE: 3/32" = 1'-0"  
DATE: 03/24/2021



*ja*  
**JORDAN ARCHITECTS**  
131 CALLE IGLESIA, SUITE 100  
SAN CLEMENTE, CA 92672  
949.388.8090

## SHEET A8

SITE DATA	
APPLICANT INFORMATION:	TROJAN STORAGE 1732 AVIATION BLVD., SUITE #217 REDONDO BEACH, CA 90278 PH: (310) 372-8600 CONTACT: BRETT HENRY
SITE ADDRESS:	5050 OLD SCANDIA LANE CALABASAS, CA
ASSESSOR'S PARCEL NUMBER:	2049-022-040



# TROJAN STORAGE

1732 AVIATION BLVD., SUITE #217  
REDONDO BEACH, CA 90278

# TROJAN CALABASAS

## LOS ANGELES COUNTY, CA

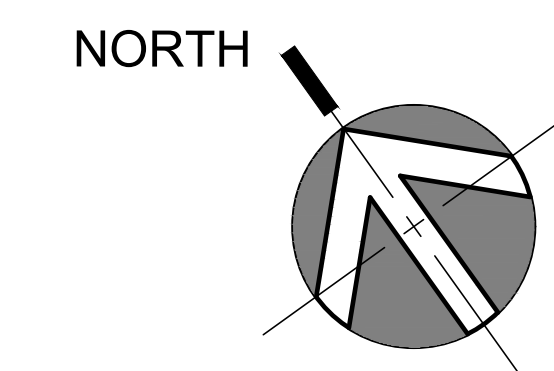
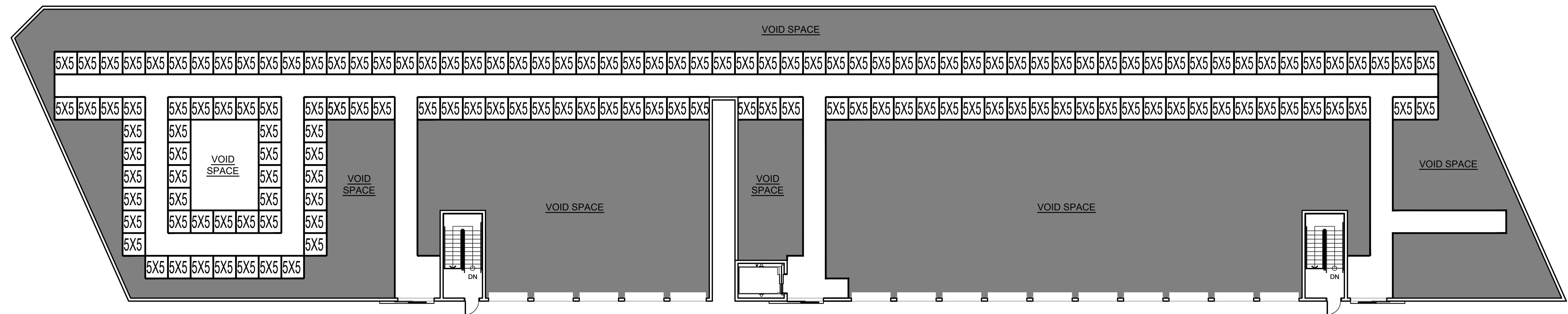
# BLDG C - UPPER BASEMENT

THIS DRAWING AND ITS CONTENTS ARE INSTRUMENTS OF SERVICE AND ARE THE COPYRIGHTED PROPERTY OF JORDAN ARCHITECTS, INC. THE USE IS EXPRESSLY INTENDED FOR THE PROJECT NOTED ABOVE AND MAY NOT BE REUSED OR REPRODUCED IN WHOLE OR IN PART WITHOUT THE WRITTEN PERMISSION OF JORDAN ARCHITECTS, INC. ©COPYRIGHT YEAR OF FIRST PUBLICATION 2020 JORDAN ARCHITECTS, INC.

JOB NUMBER: 19-506  
SCALE: 3/32" = 1'-0"  
DATE: 03/24/2021

**JORDAN ARCHITECTS**  
131 CALLE IGLESIA, SUITE 100  
SAN CLEMENTE, CA 92672  
949.388.8090

SITE DATA	
APPLICANT INFORMATION:	TROJAN STORAGE 1732 AVIATION BLVD., SUITE #217 REDONDO BEACH, CA 90278 PH: (310) 372-8600 CONTACT: BRETT HENRY
SITE ADDRESS:	5050 OLD SCANDIA LANE CALABASAS, CA
ASSESSOR'S PARCEL NUMBER:	2049-022-040



# TROJAN STORAGE

1732 AVIATION BLVD., SUITE #217  
REDONDO BEACH, CA 90278

# TROJAN CALABASAS

## LOS ANGELES COUNTY, CA

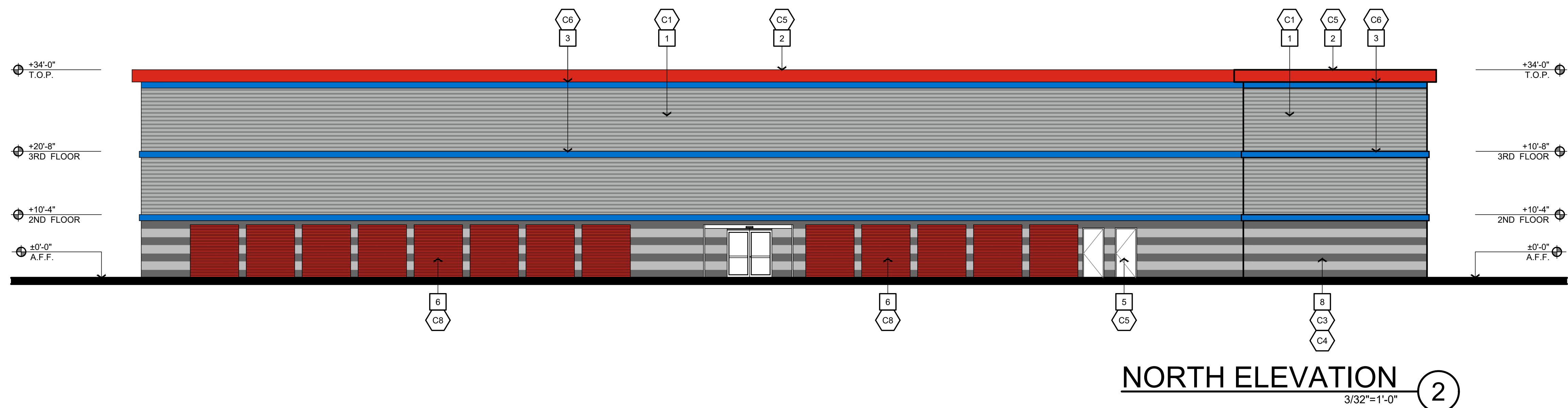
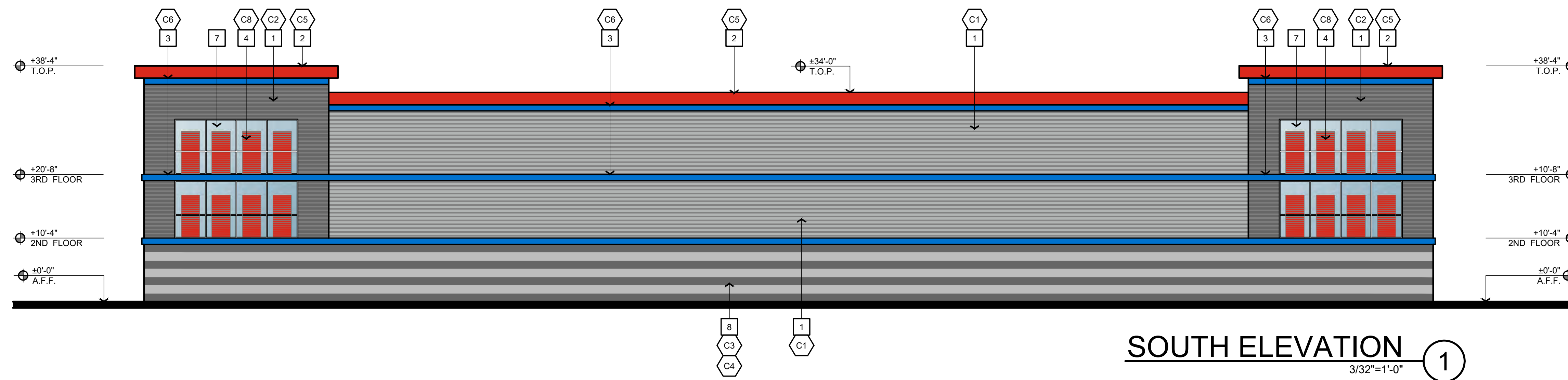
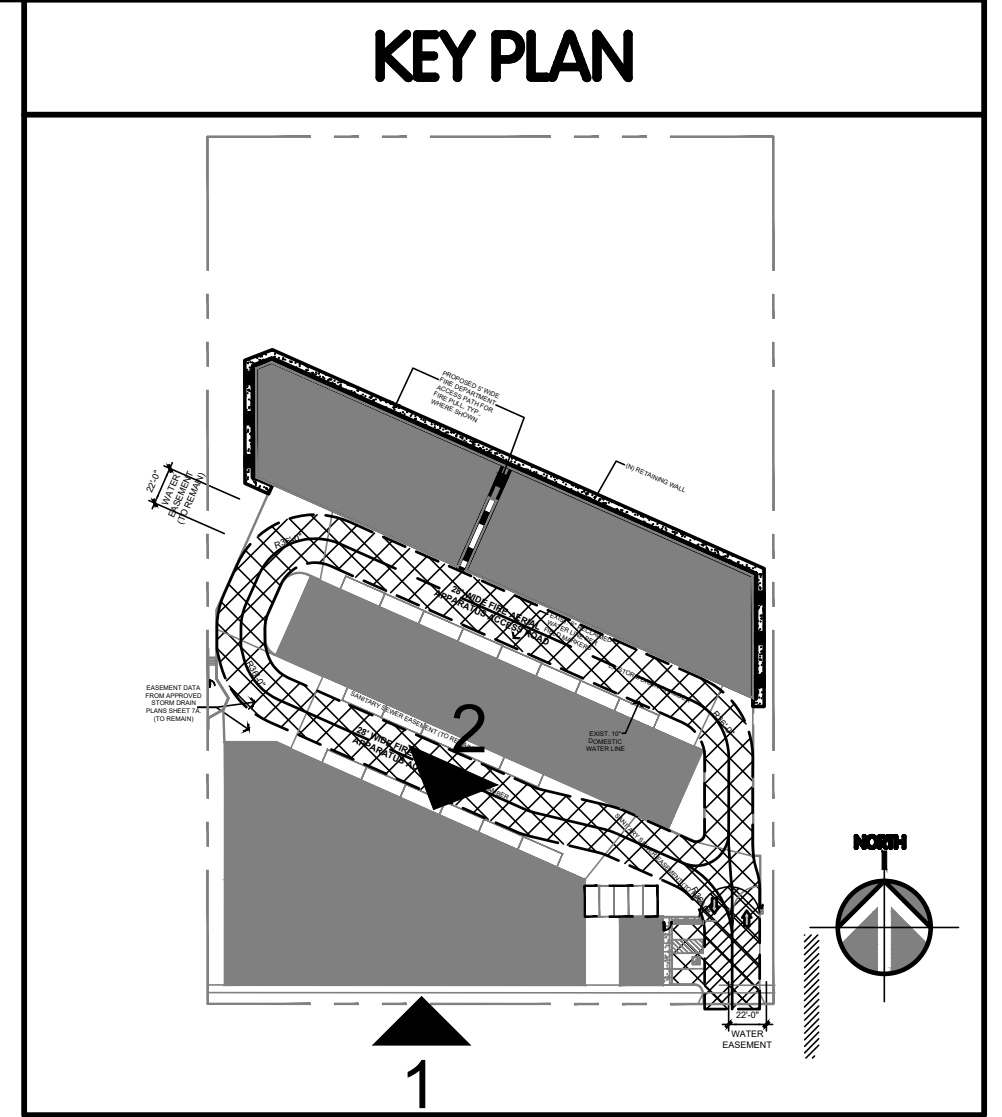
# BLDG C - 1ST FLOOR LOCKERS

THIS DRAWING AND ITS CONTENTS ARE INSTRUMENTS OF SERVICE AND ARE THE COPYRIGHTED PROPERTY OF JORDAN ARCHITECTS, INC. THE USE IS EXPRESSLY INTENDED FOR THE PROJECT NOTED ABOVE AND MAY NOT BE REUSED OR REPRODUCED IN WHOLE OR IN PART WITHOUT THE WRITTEN PERMISSION OF JORDAN ARCHITECTS, INC. ©COPYRIGHT YEAR OF FIRST PUBLICATION 2020 JORDAN ARCHITECTS, INC.

JOB NUMBER: 19-506  
SCALE: 3/32" = 1'-0"  
DATE: 03/24/2021

**JORDAN ARCHITECTS**  
131 CALLE IGLESIA, SUITE 100  
SAN CLEMENTE, CA 92672  
949.388.8090

SITE DATA	
APPLICANT INFORMATION:	TROJAN STORAGE 1732 AVIATION BLVD., SUITE #217 REDONDO BEACH, CA 90278 PH: (310) 372-8600 CONTACT: BRETT HENRY
SITE ADDRESS:	5050 OLD SCANDIA LANE CALABASAS, CA
ASSESSOR'S PARCEL NUMBER:	2049-022-040



KEYNOTES		COLOR & MATERIAL	
1 ARCHITECTURAL METAL PANEL.	7 GLAZING	C1 "ASH GRAY" BY MCELROY STEEL OR APPROVED EQUAL	C6 TROJAN BLUE - DUNN EDWARDS DEA136 "BEAUTIFUL BLUE" - OR AS SELECTED BY OWNER
2 CORNICE	8 CMU BLOCK	C2 "CHARCOAL GRAY" MCCI OR APPROVED EQUAL	C7 TROJAN DARK GRAY - DUNN EDWARDS DE6377 "BOAT ANCHOR" - OR AS SELECTED BY OWNER
3 ACCENT BAND	9 WALL MOUNTED SIGN. (SIGNAGE SHOWN FOR DESIGN CONCEPT ONLY, ALL SIGNS TO BE PER CITY CODE AND UNDER SEPARATE PERMIT).	C3 BLACK 250 - SPLIT FACE CMU BY ORCO BLOCK OR APPROVED EQUAL	C8 "PATRIOT RED" - BY JANUS INTERNATIONAL - OR AS SELECTED BY OWNER
4 FAUX ROLL-UP DOOR.		C4 COOL GRAY - SPLIT FACE CMU BY ORCO BLOCK OR APPROVED EQUAL	C9 16 GAUGE PERFORATED METAL - BY McNICHOLS - OR AS SELECTED BY OWNER
5 EGRESS SWING DOOR.		C5 TROJAN RED - DUNN EDWARDS DEA108 "POWER RED" - OR AS SELECTED BY OWNER	
6 DRIVE UP STORAGE DOOR.			

# TROJAN STORAGE

1732 AVIATION BLVD., SUITE #217  
REDONDO BEACH, CA 90278

# TROJAN CALABASAS

## LOS ANGELES COUNTY, CA

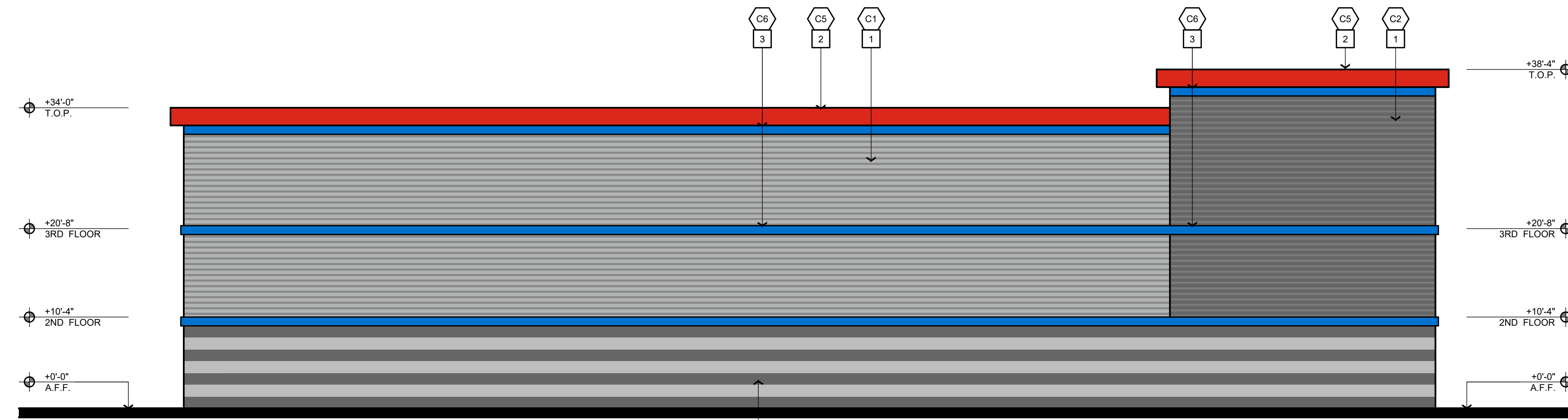
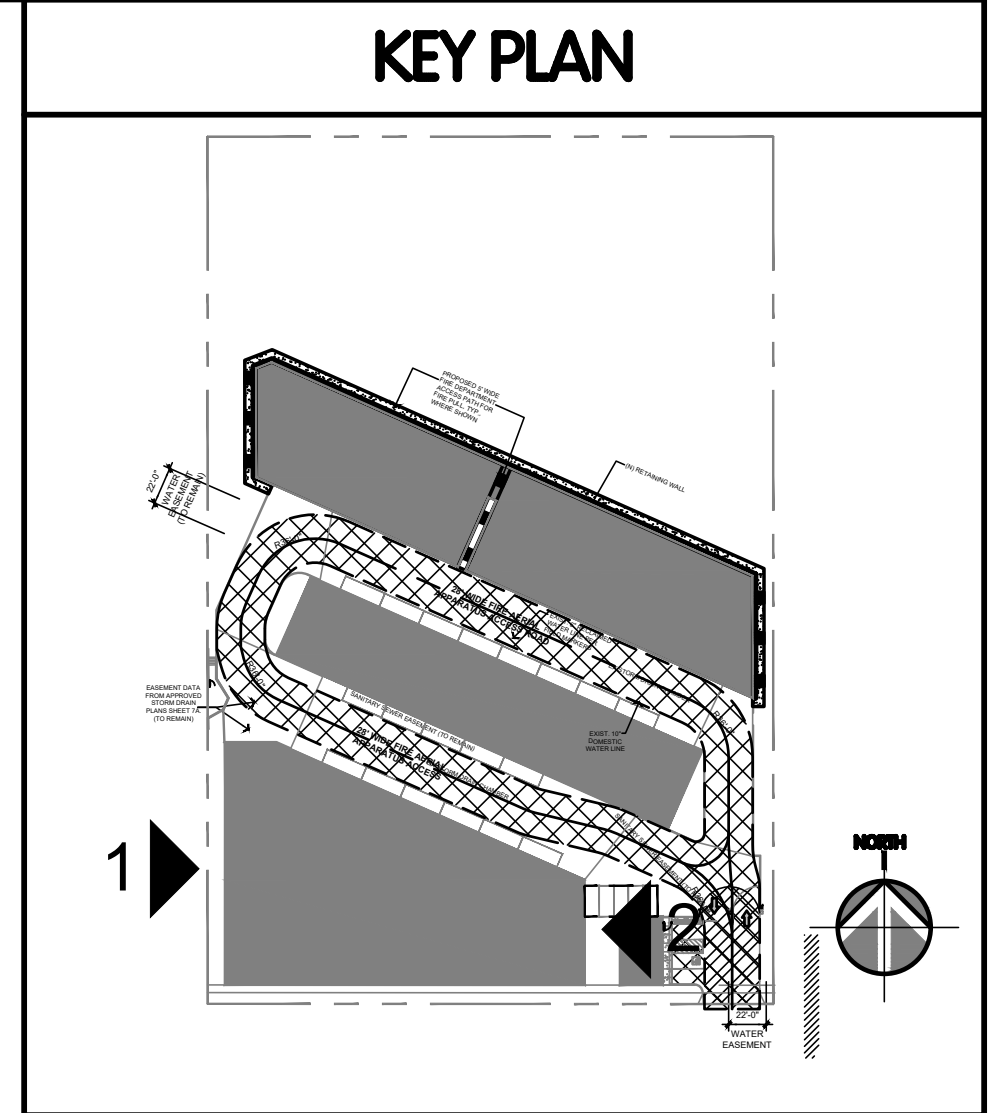
# BLDG A - ELEVATIONS

THIS DRAWING AND ITS CONTENTS ARE INSTRUMENTS OF SERVICE AND ARE THE COPYRIGHTED PROPERTY OF JORDAN ARCHITECTS, INC. THE USE IS EXPRESSLY INTENDED FOR THE PROJECT NOTED ABOVE AND MAY NOT BE REUSED OR REPRODUCED IN WHOLE OR IN PART WITHOUT THE WRITTEN PERMISSION OF JORDAN ARCHITECTS, INC. "COPYRIGHT" YEAR OF FIRST PUBLICATION 2020 JORDAN ARCHITECTS, INC.

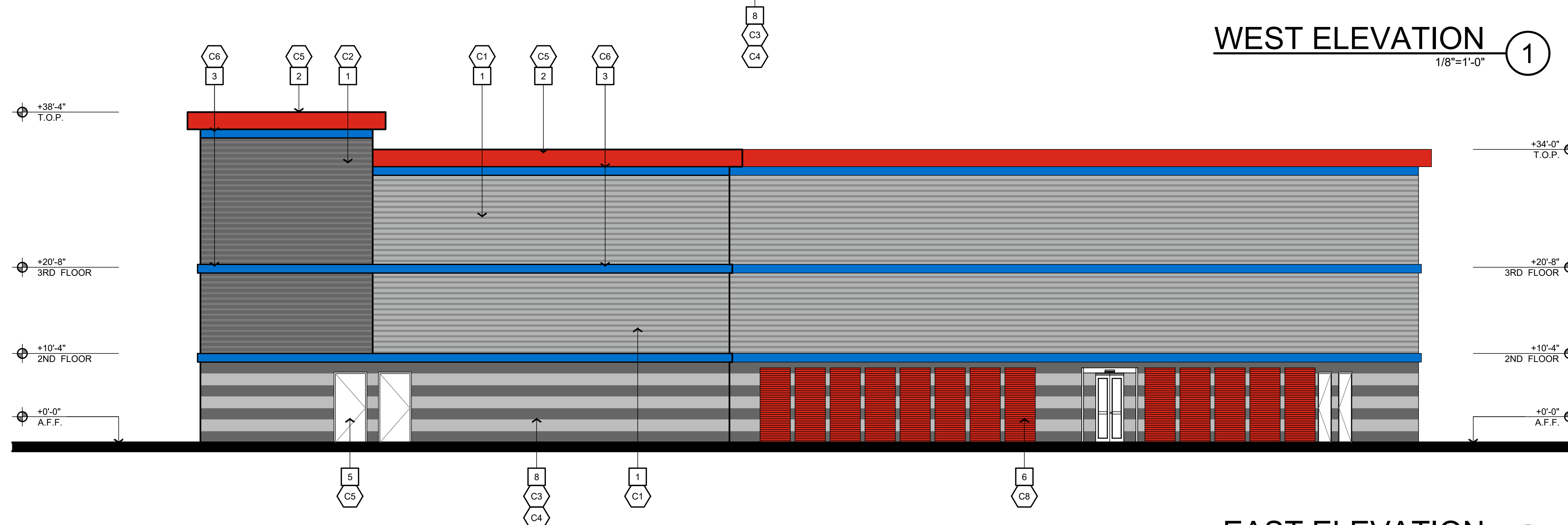
JOB NUMBER: 19-506  
SCALE: 3/32" = 1'-0"  
DATE: 03/24/2021

**JORDAN ARCHITECTS**  
131 CALLE IGLESIA, SUITE 100  
SAN CLEMENTE, CA 92672  
949.388.8090

SITE DATA	
APPLICANT INFORMATION:	TROJAN STORAGE 1732 AVIATION BLVD., SUITE #217 REDONDO BEACH, CA 90278 PH: (310) 372-8600 CONTACT: BRETT HENRY
SITE ADDRESS:	5050 OLD SCANDIA LANE CALABASAS, CA
ASSESSOR'S PARCEL NUMBER:	2049-022-040



**WEST ELEVATION** ①  
1/8"=1'-0"



**EAST ELEVATION** ②  
1/8"=1'-0"

KEYNOTES		COLOR & MATERIAL	
1 ARCHITECTURAL METAL PANEL	7 GLAZING	C1 "ASH GRAY" BY MCELROY STEEL OR APPROVED EQUAL	C6 TROJAN BLUE - DUNN EDWARDS DEA136 "BEAUTIFUL BLUE" - OR AS SELECTED BY OWNER
2 CORNICE	8 CMU BLOCK	C2 "CHARCOAL GRAY" MBI OR APPROVED EQUAL	C7 TROJAN DARK GRAY - DUNN EDWARDS DE6377 "BOAT ANCHOR" - OR AS SELECTED BY OWNER
3 ACCENT BAND	9 WALL MOUNTED SIGN. (SIGNAGE SHOWN FOR DESIGN CONCEPT ONLY. ALL SIGNS TO BE PER CITY CODE AND UNDER SEPARATE PERMIT).	C3 BLACK 250 - SPLIT FACE CMU BY ORCO BLOCK OR APPROVED EQUAL	C8 "PATRIOT RED" - BY JANUS INTERNATIONAL - OR AS SELECTED BY OWNER
4 FAUX ROLL-UP DOOR.		C4 COOL GRAY - SPLIT FACE CMU BY ORCO BLOCK OR APPROVED EQUAL	C9 16 GAUGE PERFORATED METAL - BY McNICHOLS - OR AS SELECTED BY OWNER
5 EGRESS SWING DOOR.		C5 TROJAN RED - DUNN EDWARDS DEA108 "POWER RED" - OR AS SELECTED BY OWNER	
6 DRIVE UP STORAGE DOOR.			

**TROJAN STORAGE**  
1732 AVIATION BLVD., SUITE #217  
REDONDO BEACH, CA 90278

**TROJAN CALABASAS**  
LOS ANGELES COUNTY, CA

**BLDG A - ELEVATIONS**

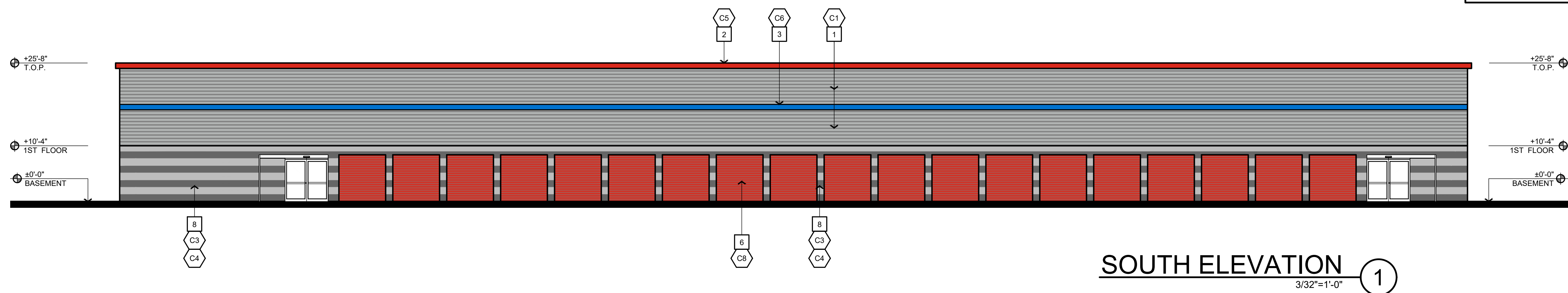
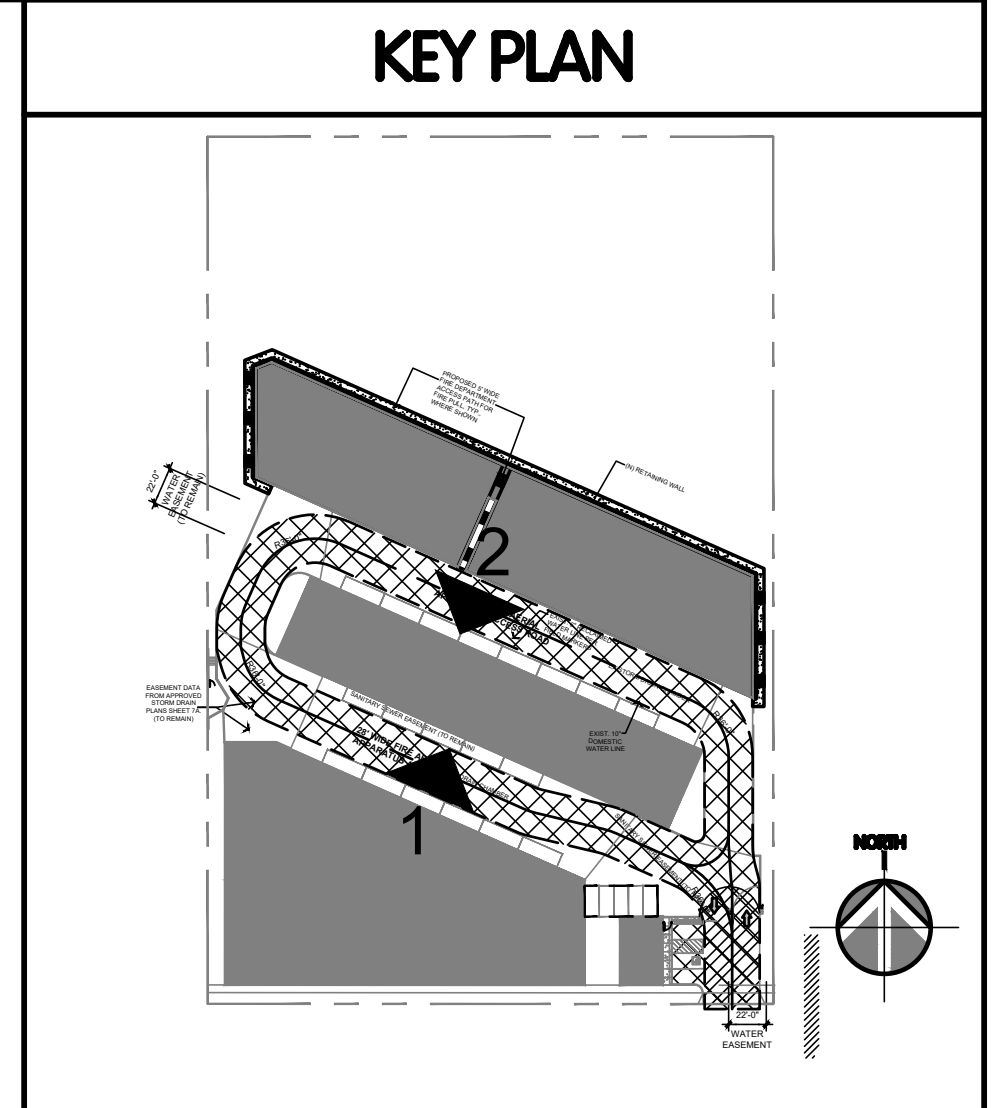
THIS DRAWING AND ITS CONTENTS ARE INSTRUMENTS OF SERVICE AND ARE THE COPYRIGHTED PROPERTY OF JORDAN ARCHITECTS, INC. THE USE IS EXPRESSLY INTENDED FOR THE PROJECT NOTED ABOVE AND MAY NOT BE REUSED OR REPRODUCED IN WHOLE OR IN PART WITHOUT THE WRITTEN PERMISSION OF JORDAN ARCHITECTS, INC. "COPYRIGHT" YEAR OF FIRST PUBLICATION 2020 JORDAN ARCHITECTS, INC.

JOB NUMBER: 19-506  
SCALE: 1/8" = 1'-0"  
DATE: 03/24/2021

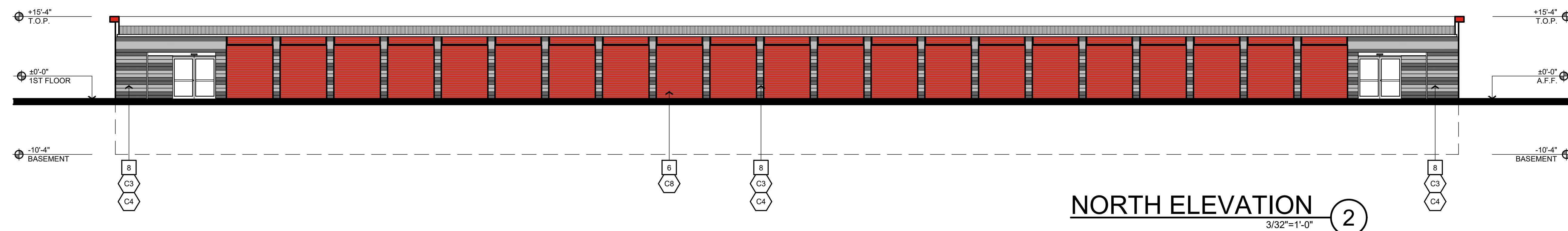


**SHEET A12**

SITE DATA	
APPLICANT INFORMATION:	TROJAN STORAGE 1732 AVIATION BLVD., SUITE #217 REDONDO BEACH, CA 90278 PH: (310) 372-8600 CONTACT: BRETT HENRY
SITE ADDRESS:	5050 OLD SCANDIA LANE CALABASAS, CA
ASSESSOR'S PARCEL NUMBER:	2049-022-040



**SOUTH ELEVATION** ①  
3/32"=1'-0"



**NORTH ELEVATION** ②  
3/32"=1'-0"

KEYNOTES		COLOR & MATERIAL	
1 ARCHITECTURAL METAL PANEL.	7 GLAZING	C1 "ASH GRAY" BY MCELROY STEEL OR APPROVED EQUAL	C6 TROJAN BLUE - DUNN EDWARDS DEA136 "BEAUTIFUL BLUE" - OR AS SELECTED BY OWNER
2 CORNICE	8 CMU BLOCK	C2 "CHARCOAL GRAY" MCCI OR APPROVED EQUAL	C7 TROJAN DARK GRAY - DUNN EDWARDS DE6377 "BOAT ANCHOR" - OR AS SELECTED BY OWNER
3 ACCENT BAND	9 WALL MOUNTED SIGN. (SIGNAGE SHOWN FOR DESIGN CONCEPT ONLY. ALL SIGNS TO BE PER CITY CODE AND UNDER SEPARATE PERMIT).	C3 BLACK 250 - SPLIT FACE CMU BY ORCO BLOCK OR APPROVED EQUAL	C8 "PATRIOT RED" - BY JANUS INTERNATIONAL - OR AS SELECTED BY OWNER
4 FAUX ROLL-UP DOOR.		C4 COOL GRAY - SPLIT FACE CMU BY ORCO BLOCK OR APPROVED EQUAL	C9 16 GAUGE PERFORATED METAL - BY McNICHOLS - OR AS SELECTED BY OWNER
5 EGRESS SWING DOOR.		C5 TROJAN RED - DUNN EDWARDS DEA108 "POWER RED" - OR AS SELECTED BY OWNER	
6 DRIVE UP STORAGE DOOR.			

# TROJAN STORAGE

1732 AVIATION BLVD., SUITE #217  
REDONDO BEACH, CA 90278

# TROJAN CALABASAS

## LOS ANGELES COUNTY, CA

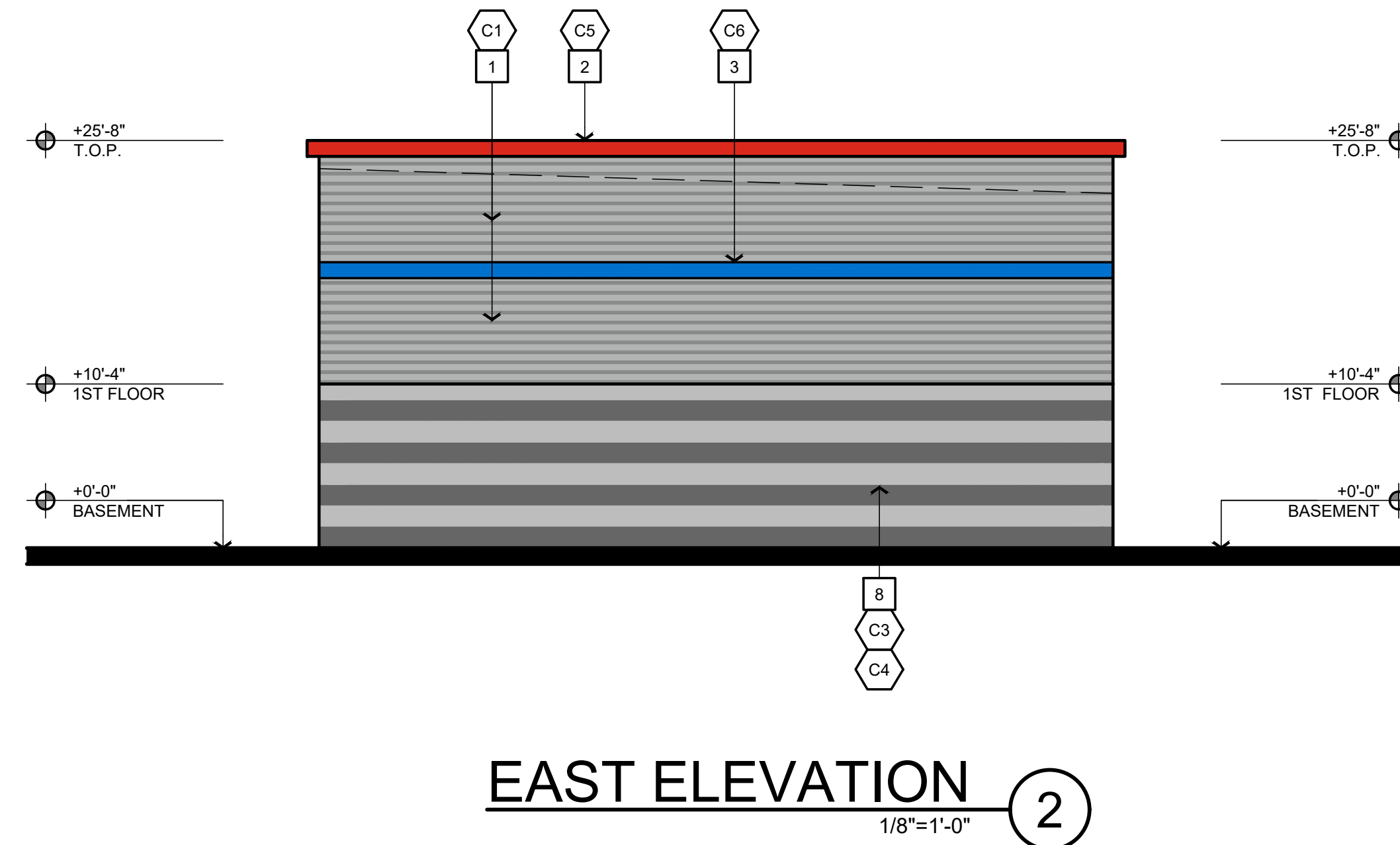
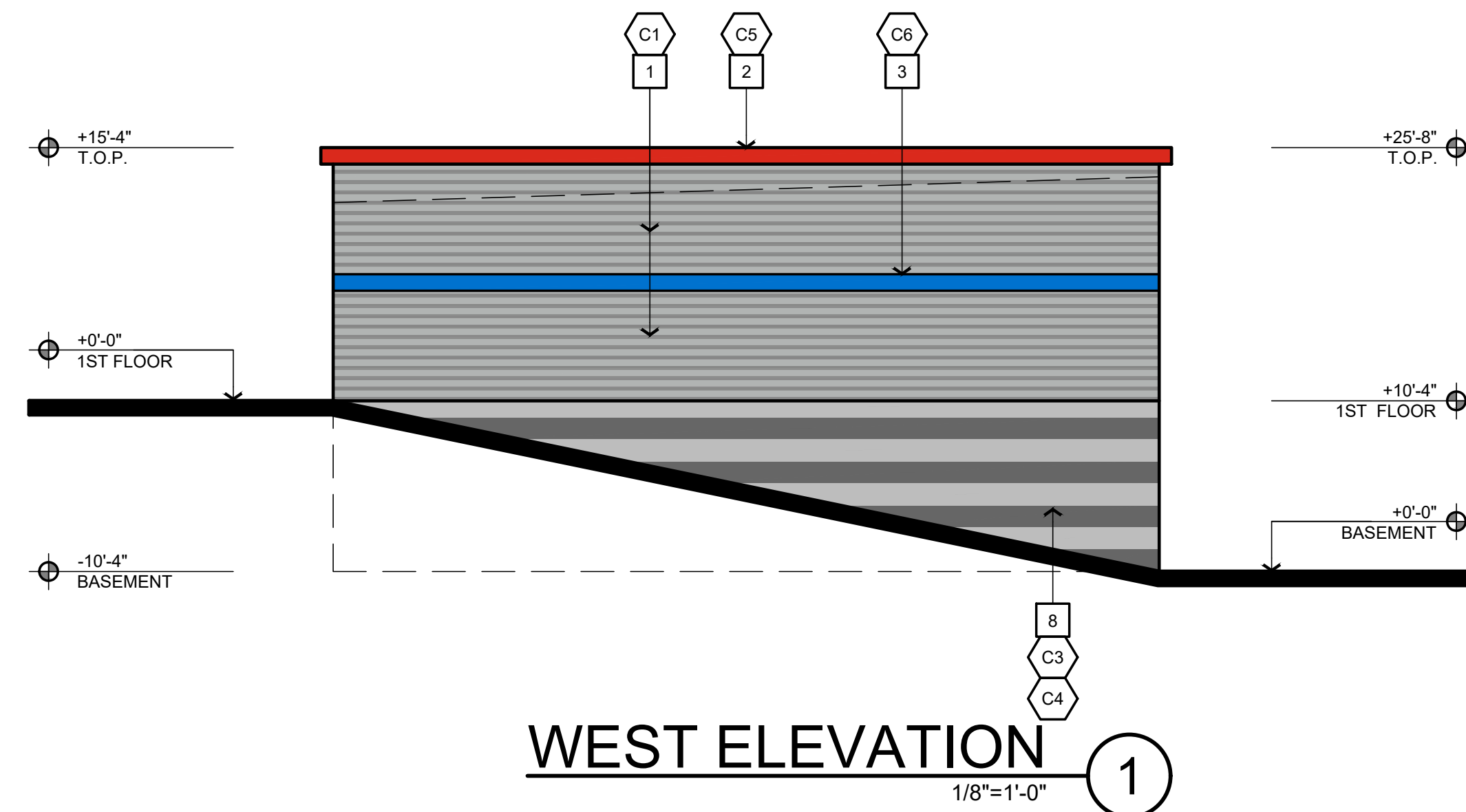
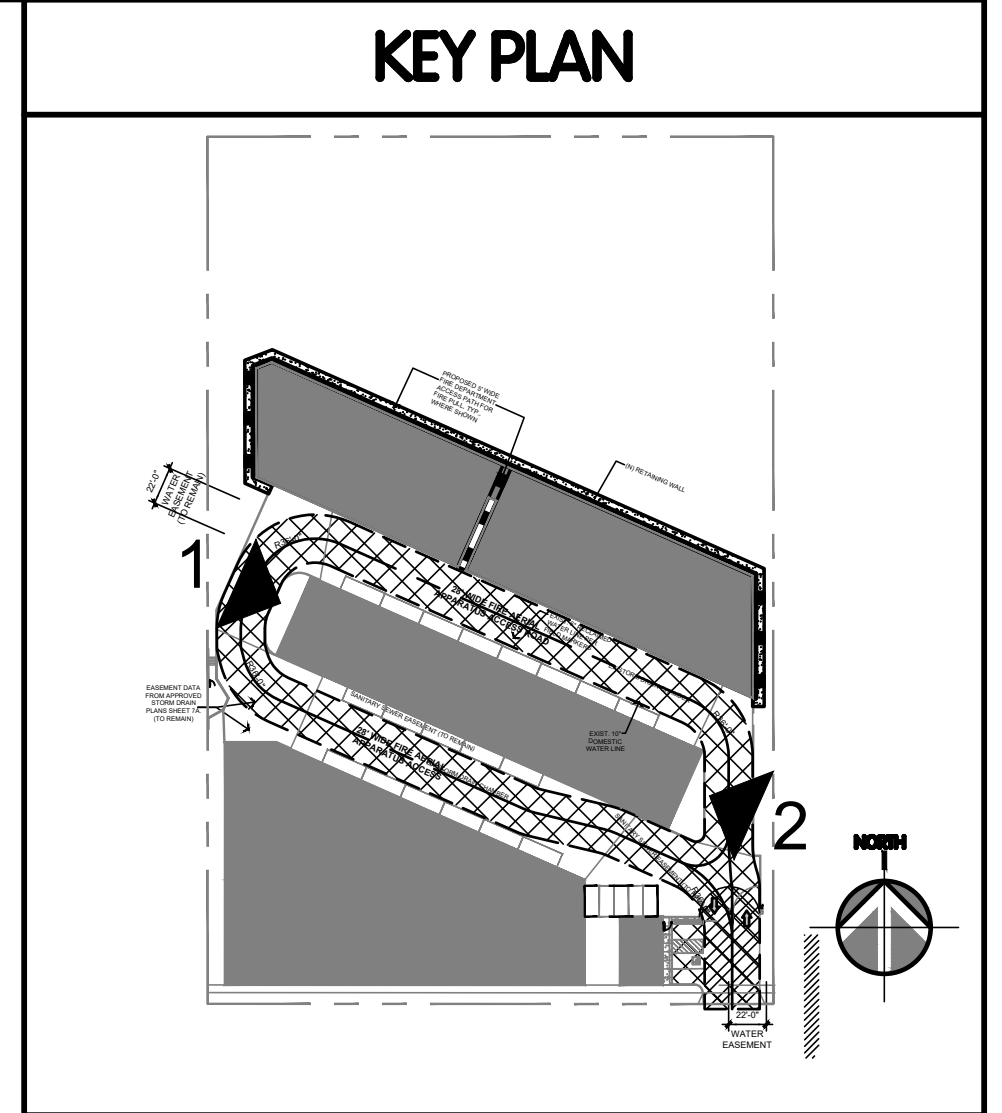
# BLDG B - ELEVATIONS

THIS DRAWING AND ITS CONTENTS ARE INSTRUMENTS OF SERVICE AND ARE THE COPYRIGHTED PROPERTY OF JORDAN ARCHITECTS, INC. THE USE IS EXPRESSLY INTENDED FOR THE PROJECT NOTED ABOVE AND MAY NOT BE REUSED OR REPRODUCED IN WHOLE OR IN PART WITHOUT THE WRITTEN PERMISSION OF JORDAN ARCHITECTS, INC. "COPYRIGHT" YEAR OF FIRST PUBLICATION 2020 JORDAN ARCHITECTS, INC.

JOB NUMBER: 19-506  
SCALE: 3/32" = 1'-0"  
DATE: 03/24/2021

**JORDAN ARCHITECTS**  
131 CALLE IGLESIA, SUITE 100  
SAN CLEMENTE, CA 92672  
949.388.8090

SITE DATA	
APPLICANT INFORMATION:	TROJAN STORAGE 1732 AVIATION BLVD., SUITE #217 REDONDO BEACH, CA 90278 PH: (310) 372-8600 CONTACT: BRETT HENRY
SITE ADDRESS:	5050 OLD SCANDIA LANE CALABASAS, CA
ASSESSOR'S PARCEL NUMBER:	2049-022-040



KEYNOTES		COLOR & MATERIAL	
1 ARCHITECTURAL METAL PANEL.	7 GLAZING	C1 "ASH GRAY" BY MCELROY STEEL OR APPROVED EQUAL	C6 TROJAN BLUE - DUNN EDWARDS DEA136 "BEAUTIFUL BLUE" - OR AS SELECTED BY OWNER
2 CORNICE	8 CMU BLOCK	C2 "CHARCOAL GRAY" MCCI OR APPROVED EQUAL	C7 TROJAN DARK GRAY - DUNN EDWARDS DE6377 "BOAT ANCHOR" - OR AS SELECTED BY OWNER
3 ACCENT BAND	9 WALL MOUNTED SIGN. (SIGNAGE SHOWN FOR DESIGN CONCEPT ONLY, ALL SIGNS TO BE PER CITY CODE AND UNDER SEPARATE PERMIT).	C3 BLACK 250 - SPLIT FACE CMU BY ORCO BLOCK OR APPROVED EQUAL	C8 "PATRIOT RED" - BY JANUS INTERNATIONAL - OR AS SELECTED BY OWNER
4 FAUX ROLL-UP DOOR.		C4 COOL GRAY - SPLIT FACE CMU BY ORCO BLOCK OR APPROVED EQUAL	C9 16 GAUGE PERFORATED METAL - BY McNICHOLS - OR AS SELECTED BY OWNER
5 EGRESS SWING DOOR.		C5 TROJAN RED - DUNN EDWARDS DEA108 "POWER RED" - OR AS SELECTED BY OWNER	
6 DRIVE UP STORAGE DOOR.			

**TROJAN STORAGE**  
1732 AVIATION BLVD., SUITE #217  
REDONDO BEACH, CA 90278

**TROJAN CALABASAS**  
LOS ANGELES COUNTY, CA

**BLDG B - ELEVATIONS**

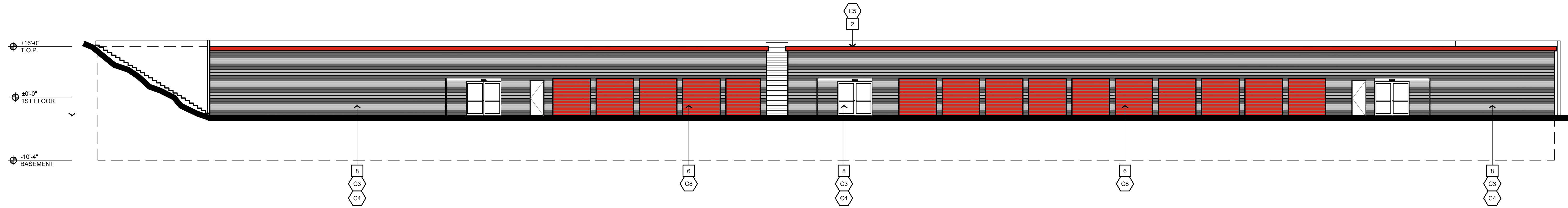
THIS DRAWING AND ITS CONTENTS ARE INSTRUMENTS OF SERVICE AND ARE THE COPYRIGHTED PROPERTY OF JORDAN ARCHITECTS, INC. THE USE IS EXPRESSLY INTENDED FOR THE PROJECT NOTED ABOVE AND MAY NOT BE REUSED OR REPRODUCED IN WHOLE OR IN PART WITHOUT THE WRITTEN PERMISSION OF JORDAN ARCHITECTS, INC. "COPYRIGHT" YEAR OF FIRST PUBLICATION 2020 JORDAN ARCHITECTS, INC.

JOB NUMBER: 19-506  
SCALE: 1/8" = 1'-0"  
DATE: 03/24/2021



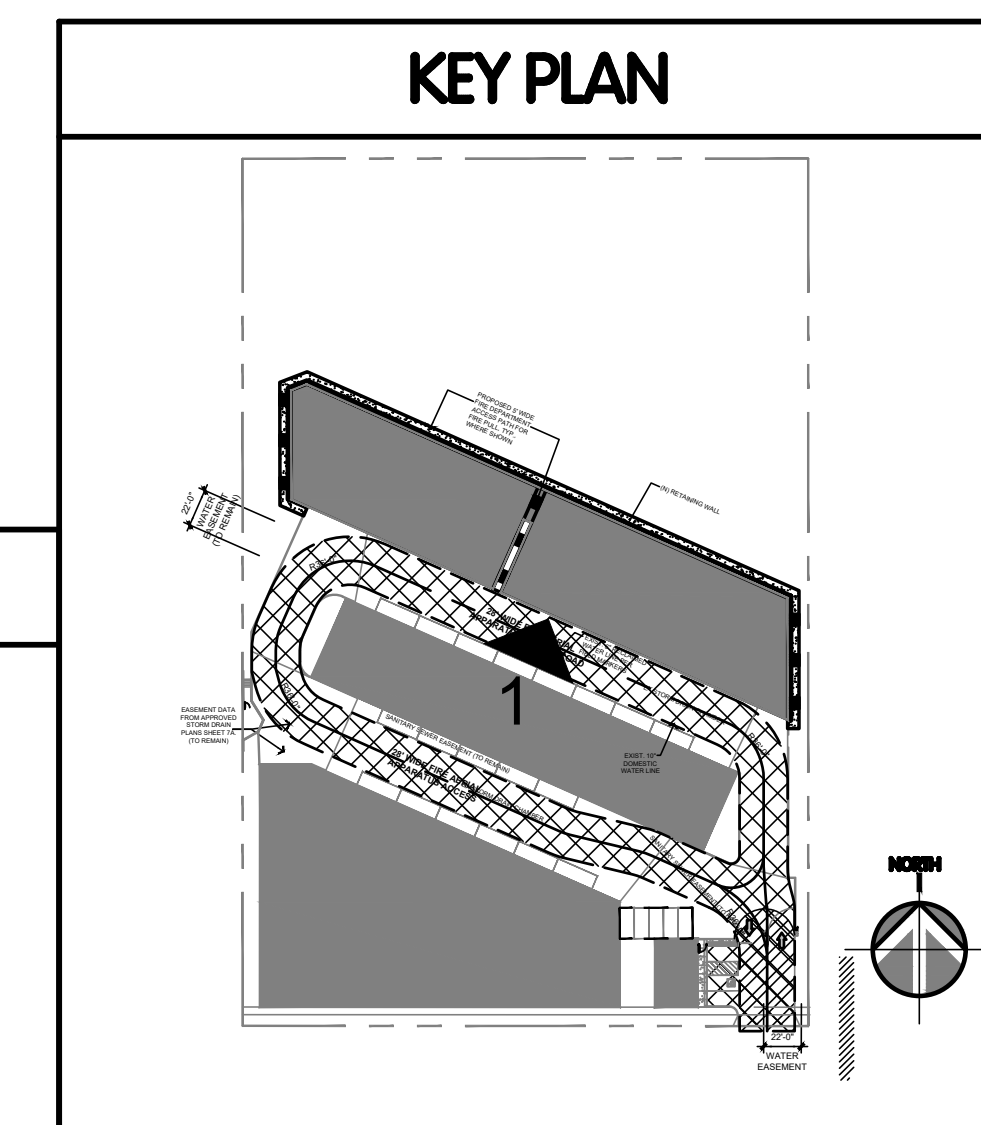
**SHEET A14**

SITE DATA	
APPLICANT INFORMATION:	TROJAN STORAGE 1732 AVIATION BLVD., SUITE #217 REDONDO BEACH, CA 90278 PH: (310) 372-8600 CONTACT: BRETT HENRY
SITE ADDRESS:	5050 OLD SCANDIA LANE CALABASAS, CA
ASSESSOR'S PARCEL NUMBER:	2049-022-040



**SOUTH ELEVATION** ①  
3/32"=1'-0"

KEYNOTES		COLOR & MATERIAL	
1 ARCHITECTURAL METAL PANEL.	7 GLAZING	C1 "ASH GRAY" BY MCELROY STEEL OR APPROVED EQUAL	C6 TROJAN BLUE - DUNN EDWARDS DEA136 "BEAUTIFUL BLUE" - OR AS SELECTED BY OWNER
2 CORNICE	8 CMU BLOCK	C2 "CHARCOAL GRAY" MCCI OR APPROVED EQUAL	C7 TROJAN DARK GRAY - DUNN EDWARDS DE5377 "BOAT ANCHOR" - OR AS SELECTED BY OWNER
3 ACCENT BAND	9 WALL MOUNTED SIGN. (SIGNAGE SHOWN FOR DESIGN CONCEPT ONLY. ALL SIGNS TO BE PER CITY CODE AND UNDER SEPARATE PERMIT).	C3 BLACK 250 - SPLIT FACE CMU BY ORCO BLOCK OR APPROVED EQUAL	C8 "PATRIOT RED" - BY JANUS INTERNATIONAL - OR AS SELECTED BY OWNER
4 FAUX ROLL-UP DOOR.		C4 COOL GRAY - SPLIT FACE CMU BY ORCO BLOCK OR APPROVED EQUAL	C9 16 GAUGE PERFORATED METAL - BY McNICHOLS - OR AS SELECTED BY OWNER
5 EGRESS SWING DOOR.		C5 TROJAN RED - DUNN EDWARDS DEA108 "POWER RED" - OR AS SELECTED BY OWNER	
6 DRIVE UP STORAGE DOOR.			



# TROJAN STORAGE

1732 AVIATION BLVD., SUITE #217  
REDONDO BEACH, CA 90278

# TROJAN CALABASAS

LOS ANGELES COUNTY, CA

# BLDG C - ELEVATION

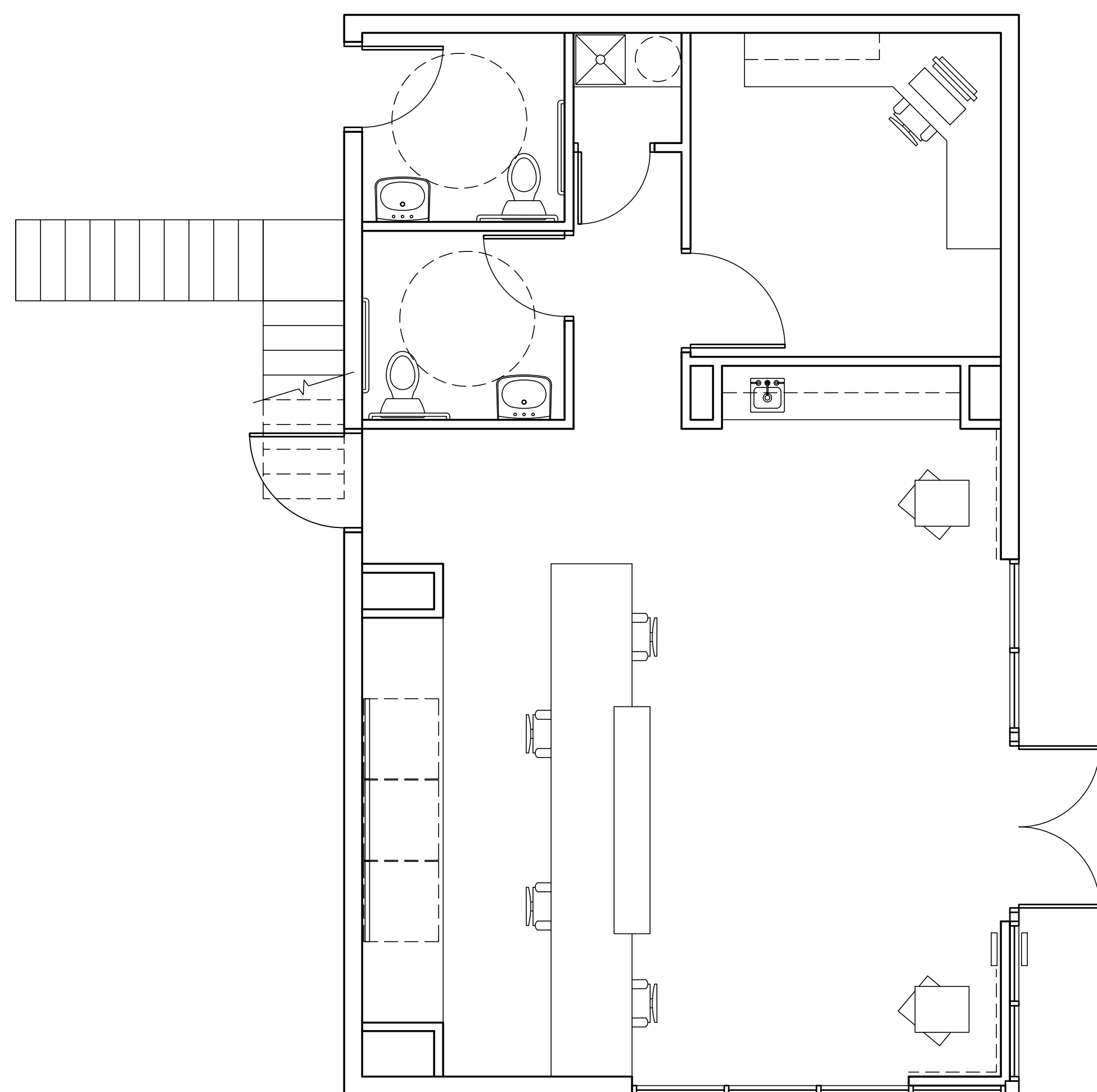
THIS DRAWING AND ITS CONTENTS ARE INSTRUMENTS OF SERVICE AND ARE THE COPYRIGHTED PROPERTY OF JORDAN ARCHITECTS, INC. THE USE IS EXPRESSLY INTENDED FOR THE PROJECT NOTED ABOVE AND MAY NOT BE REUSED OR REPRODUCED IN WHOLE OR IN PART WITHOUT THE WRITTEN PERMISSION OF JORDAN ARCHITECTS, INC. "COPYRIGHT" YEAR OF FIRST PUBLICATION 2020 JORDAN ARCHITECTS, INC.

JOB NUMBER: 19-506  
SCALE: 3/32" = 1'-0"  
DATE: 03/24/2021

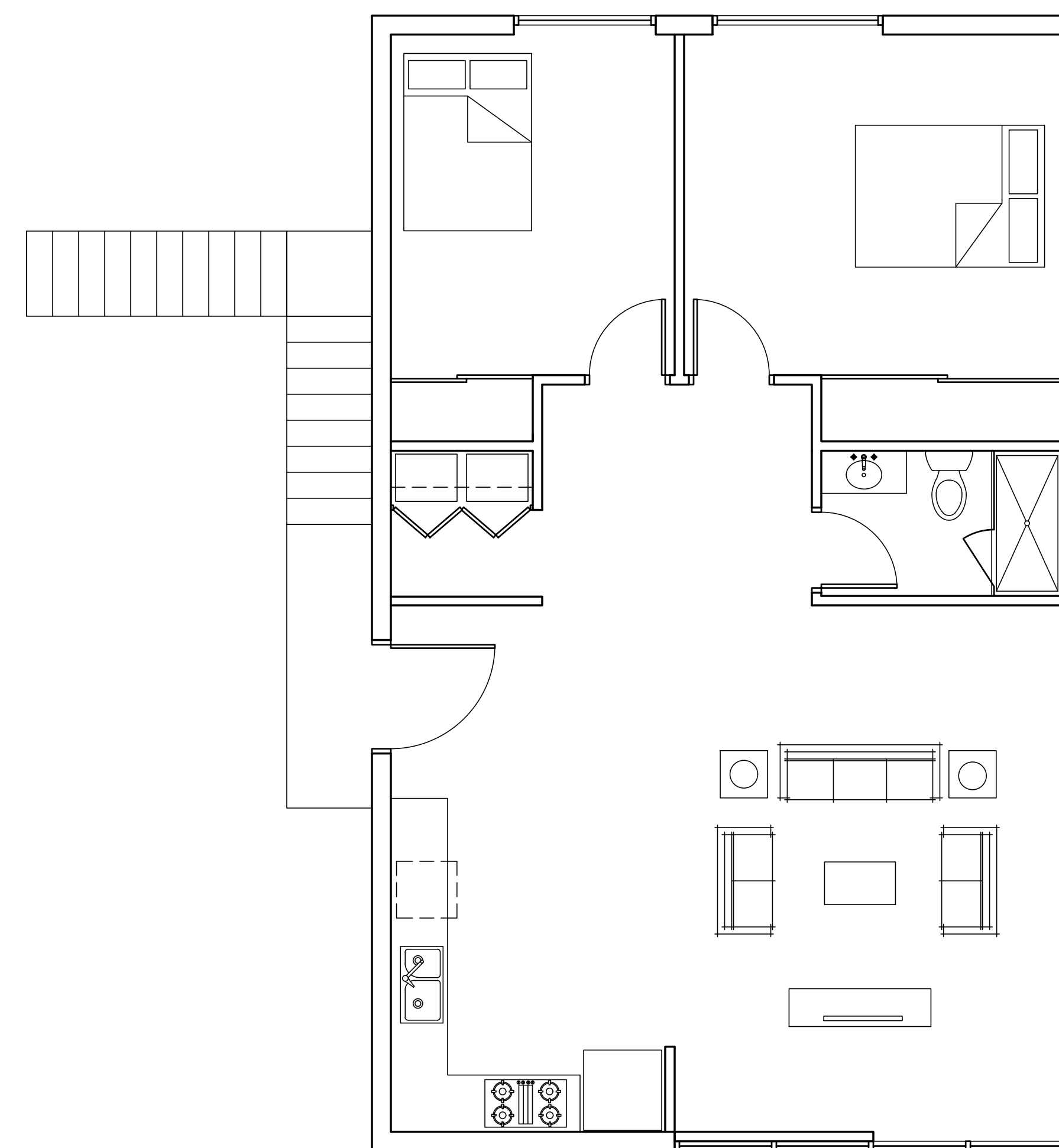
**JORDAN ARCHITECTS**  
131 CALLE IGLESIA, SUITE 100  
SAN CLEMENTE, CA 92672  
949.388.8090



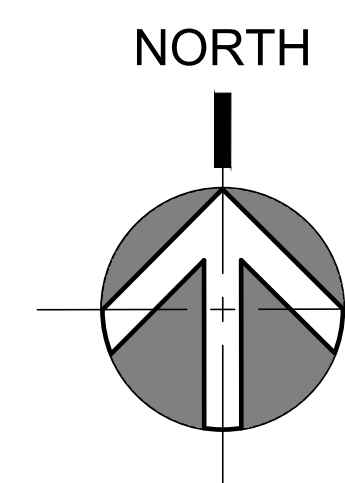
SITE DATA	
APPLICANT INFORMATION:	TROJAN STORAGE 1732 AVIATION BLVD., SUITE #217 REDONDO BEACH, CA 90278 PH: (310) 372-8600 CONTACT: BRETT HENRY
SITE ADDRESS:	5050 OLD SCANDIA LANE CALABASAS, CA
ASSESSOR'S PARCEL NUMBER:	2049-022-040



PROPOSED OFFICE FLOOR PLAN ①  
1/8"=1'-0"



PROPOSED RESIDENCE FLOOR PLAN ②  
1/8"=1'-0"



# TROJAN STORAGE

1732 AVIATION BLVD., SUITE #217  
REDONDO BEACH, CA 90278

# TROJAN CALABASAS

## LOS ANGELES COUNTY, CA

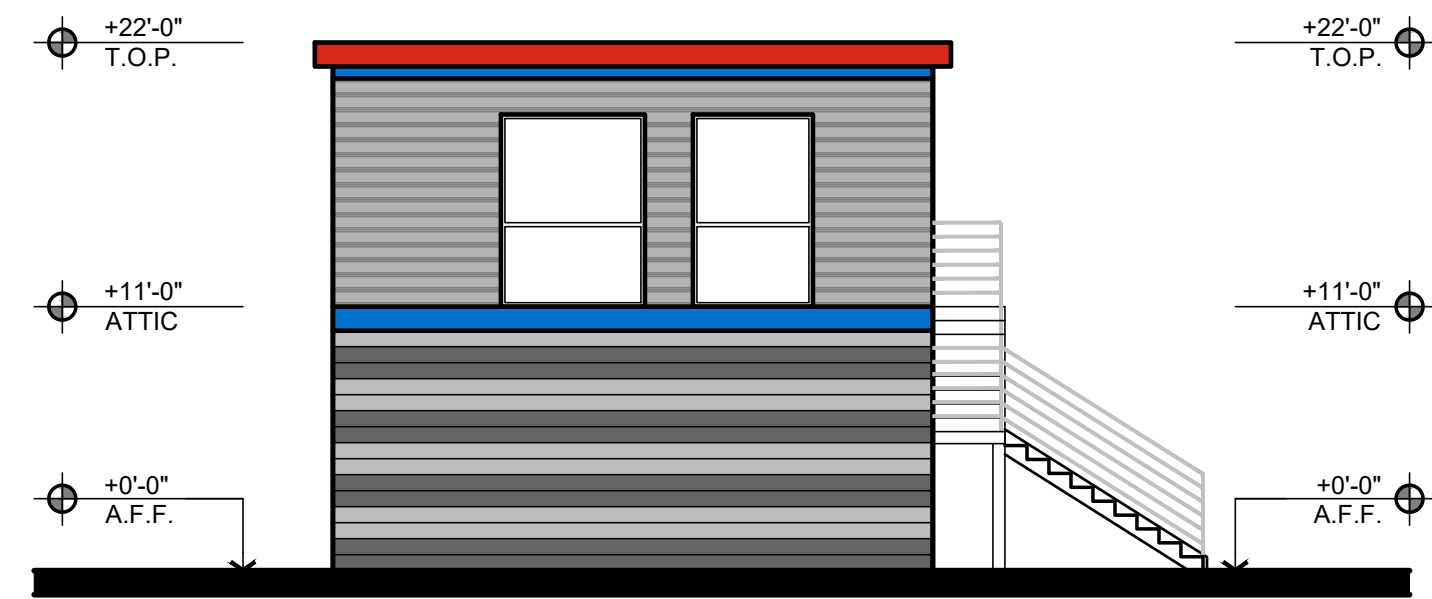
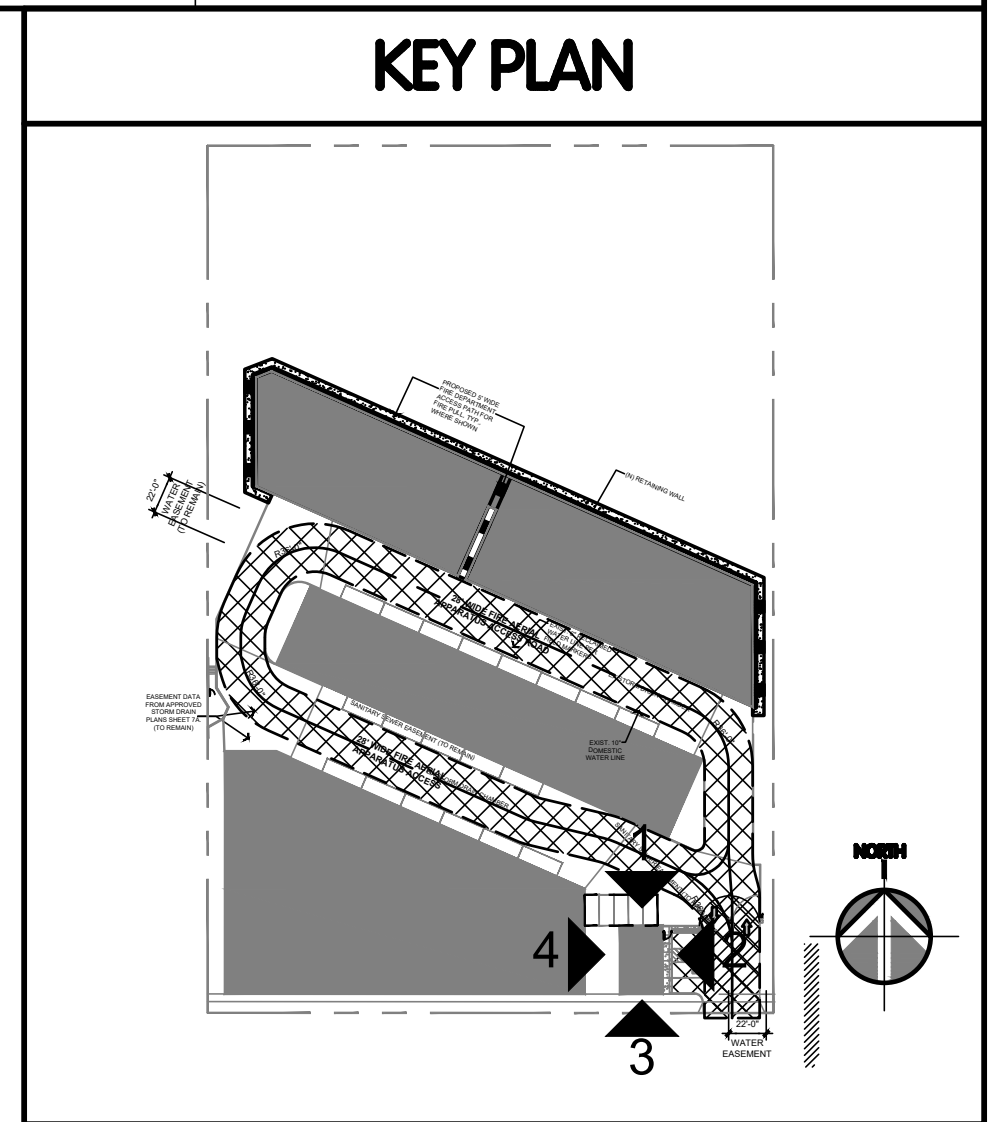
# OFFICE & RESIDENCE PLANS

THIS DRAWING AND ITS CONTENTS ARE INSTRUMENTS OF SERVICE AND ARE THE COPYRIGHTED PROPERTY OF JORDAN ARCHITECTS, INC. THE USE IS EXPRESSLY INTENDED FOR THE PROJECT NOTED ABOVE AND MAY NOT BE REUSED OR REPRODUCED IN WHOLE OR IN PART WITHOUT THE WRITTEN PERMISSION OF JORDAN ARCHITECTS, INC. ©COPYRIGHT YEAR OF FIRST PUBLICATION 2020 JORDAN ARCHITECTS, INC.

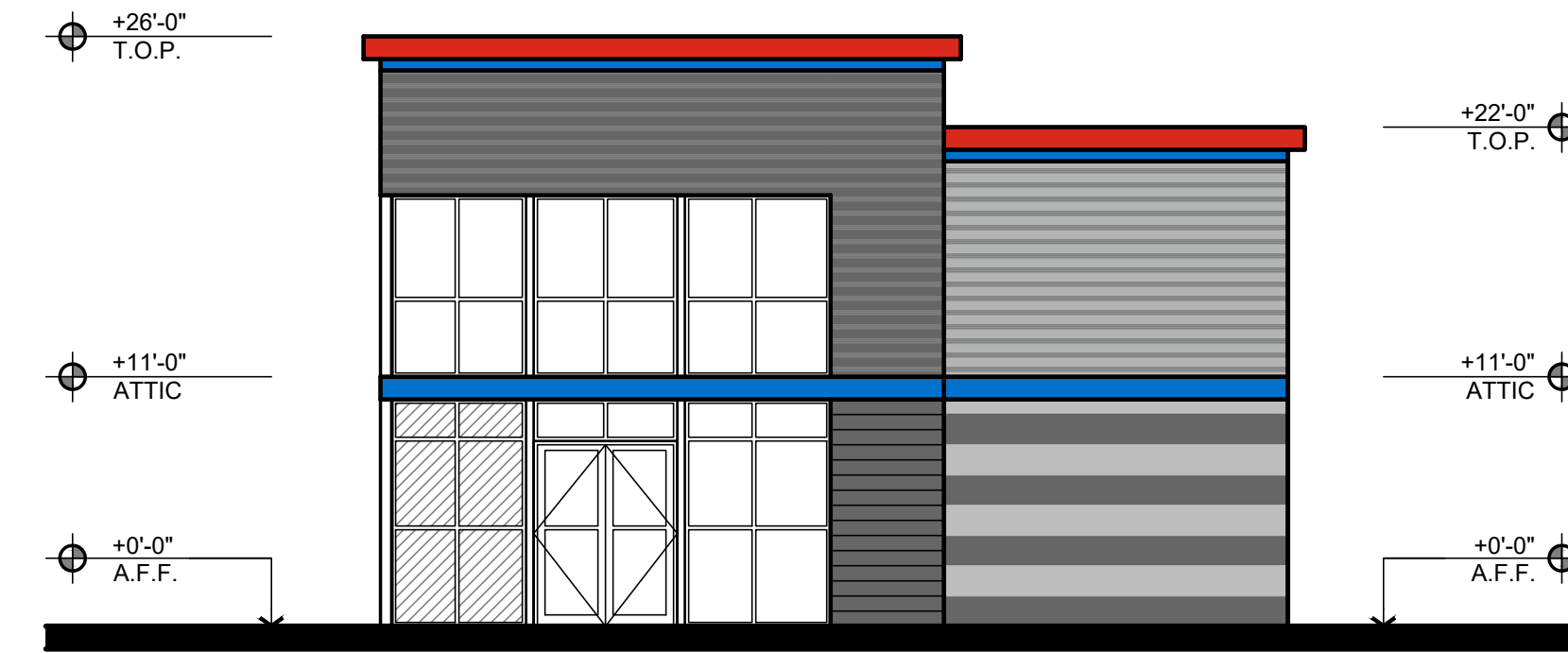
JOB NUMBER: 19-506  
SCALE: 1/8" = 1'-0"  
DATE: 06/13/2024



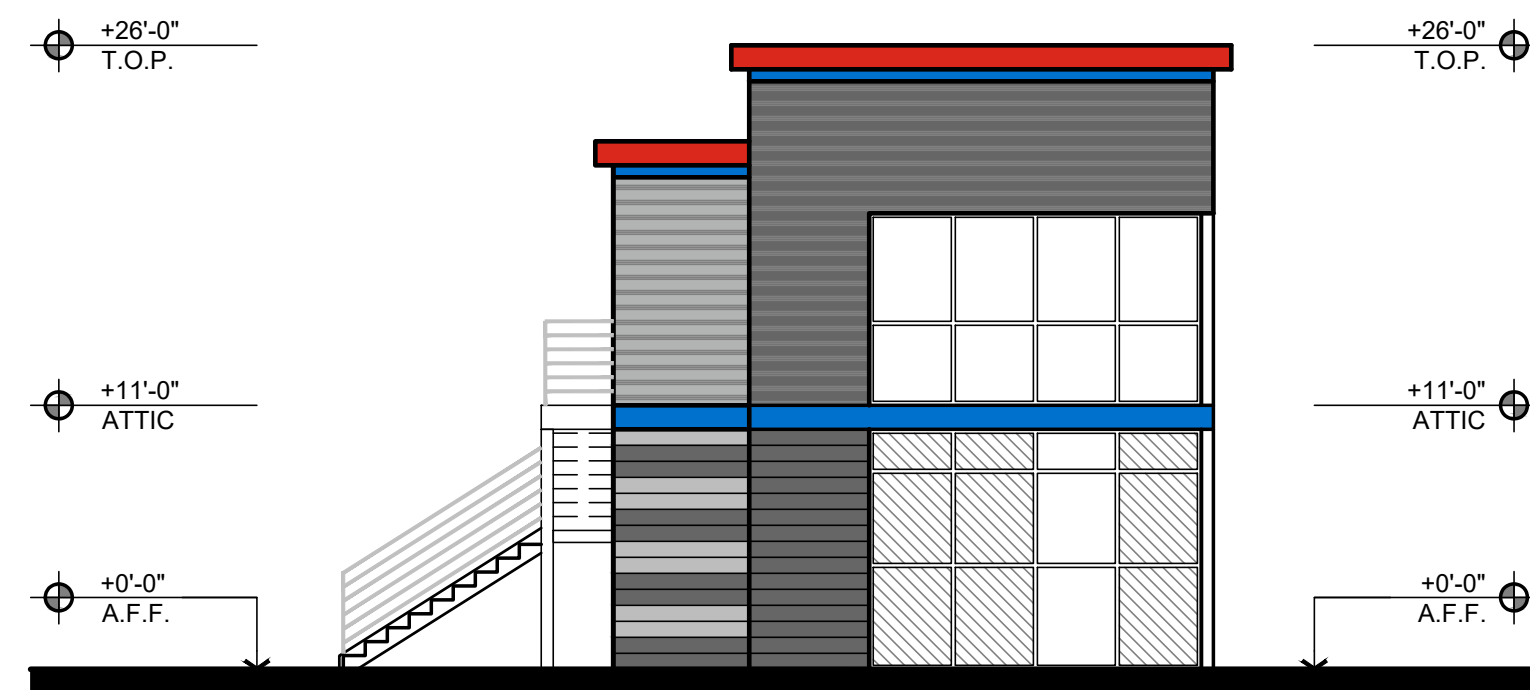
SITE DATA	
APPLICANT INFORMATION:	TROJAN STORAGE 1732 AVIATION BLVD., SUITE #217 REDONDO BEACH, CA 90278 PH: (310) 372-8600 CONTACT: BRETT HENRY
SITE ADDRESS:	5050 OLD SCANDIA LANE CALABASAS, CA
ASSESSOR'S PARCEL NUMBER:	2049-022-040



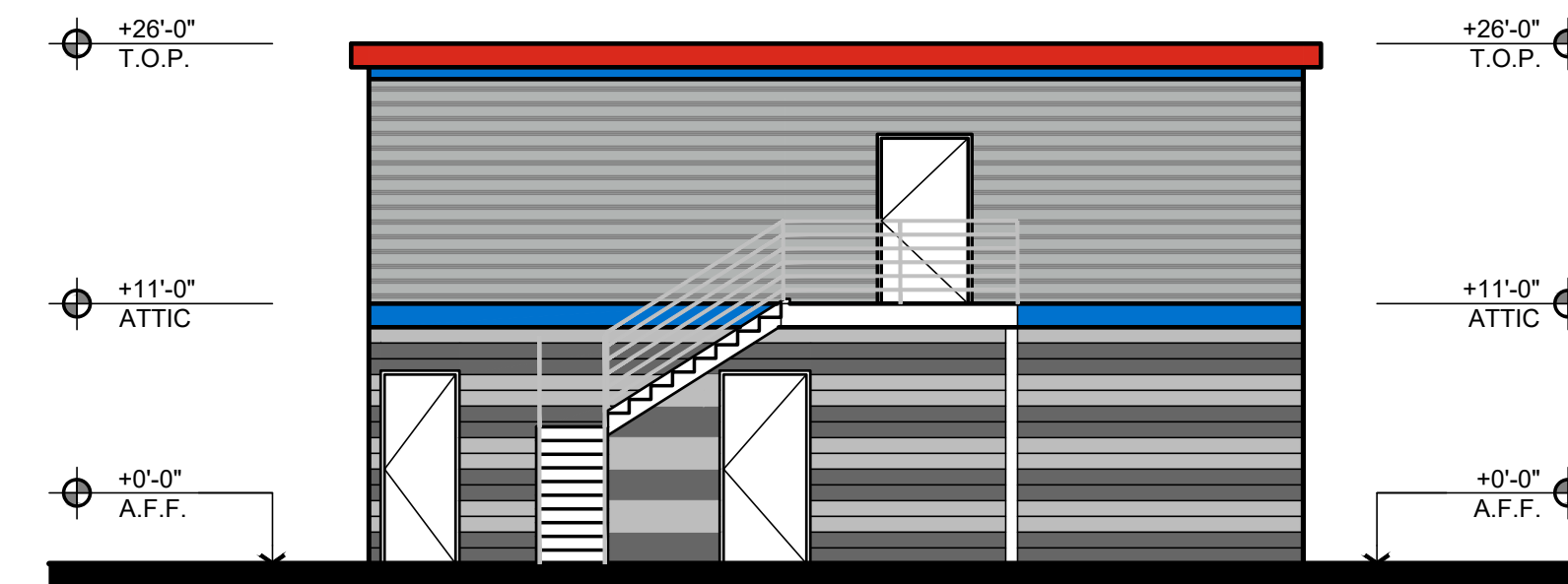
**NORTH ELEVATION** ①  
1/8"=1'-0"



**EAST ELEVATION** ②  
1/8"=1'-0"



**SOUTH ELEVATION** ③  
1/8"=1'-0"



**WEST ELEVATION** ④  
1/8"=1'-0"

KEYNOTES		COLOR & MATERIAL	
1 ARCHITECTURAL METAL PANEL	7 GLAZING	C1 "ASH GRAY" BY MCELROY STEEL OR APPROVED EQUAL	C6 TROJAN BLUE - DUNN EDWARDS DEA136 "BEAUTIFUL BLUE" - OR AS SELECTED BY OWNER
2 CORNICE	8 CMU BLOCK	C2 "CHARCOAL GRAY" MCCI OR APPROVED EQUAL	C7 TROJAN DARK GRAY - DUNN EDWARDS DE6377 "BOAT ANCHOR" - OR AS SELECTED BY OWNER
3 ACCENT BAND	9 WALL MOUNTED SIGN. (SIGNAGE SHOWN FOR DESIGN CONCEPT ONLY. ALL SIGNS TO BE PER CITY CODE AND UNDER SEPARATE PERMIT).	C3 BLACK 250 - SPLIT FACE CMU BY ORCO BLOCK OR APPROVED EQUAL	C8 "PATRIOT RED" - BY JANUS INTERNATIONAL - OR AS SELECTED BY OWNER
4 FAUX ROLL-UP DOOR.		C4 COOL GRAY - SPLIT FACE CMU BY ORCO BLOCK OR APPROVED EQUAL	C9 16 GAUGE PERFORATED METAL - BY MNICHOLS - OR AS SELECTED BY OWNER
5 EGRESS SWING DOOR.		C5 TROJAN RED - DUNN EDWARDS DEA108 "POWER RED" - OR AS SELECTED BY OWNER	
6 DRIVE UP STORAGE DOOR.			

# TROJAN STORAGE

1732 AVIATION BLVD., SUITE #217  
REDONDO BEACH, CA 90278

# TROJAN CALABASAS

LOS ANGELES COUNTY, CA

# OFFICE ELEVATIONS

THIS DRAWING AND ITS CONTENTS ARE INSTRUMENTS OF SERVICE AND ARE THE COPYRIGHTED PROPERTY OF JORDAN ARCHITECTS, INC. THE USE IS EXPRESSLY INTENDED FOR THE PROJECT NOTED ABOVE AND MAY NOT BE REUSED OR REPRODUCED IN WHOLE OR IN PART WITHOUT THE WRITTEN PERMISSION OF JORDAN ARCHITECTS, INC. "COPYRIGHT" YEAR OF FIRST PUBLICATION 2020 JORDAN ARCHITECTS, INC.

JOB NUMBER: 19-506  
SCALE: 1/8" = 1'-0"  
DATE: 03/24/2021

**JORDAN ARCHITECTS**  
131 CALLE IGLESIA, SUITE 100  
SAN CLEMENTE, CA 92672  
949.388.8090

SITE DATA	
APPLICANT INFORMATION:	TROJAN STORAGE 1732 AVIATION BLVD., SUITE #217 REDONDO BEACH, CA 90278 PH: (310) 372-8600 CONTACT: BRETT HENRY
SITE ADDRESS:	5050 OLD SCANDIA LANE CALABASAS, CA
ASSESSOR'S PARCEL NUMBER:	2049-022-040



# TROJAN STORAGE

1732 AVIATION BLVD., SUITE #217  
REDONDO BEACH, CA 90278

# TROJAN CALABASAS

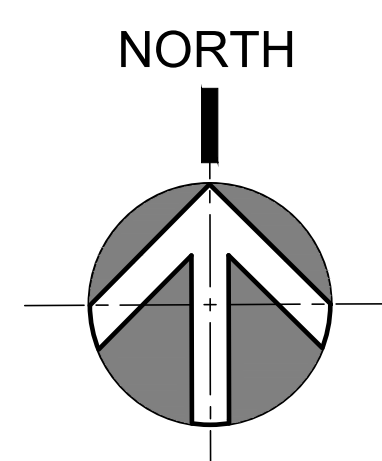
## LOS ANGELES COUNTY, CA

# SITE PHOTOS

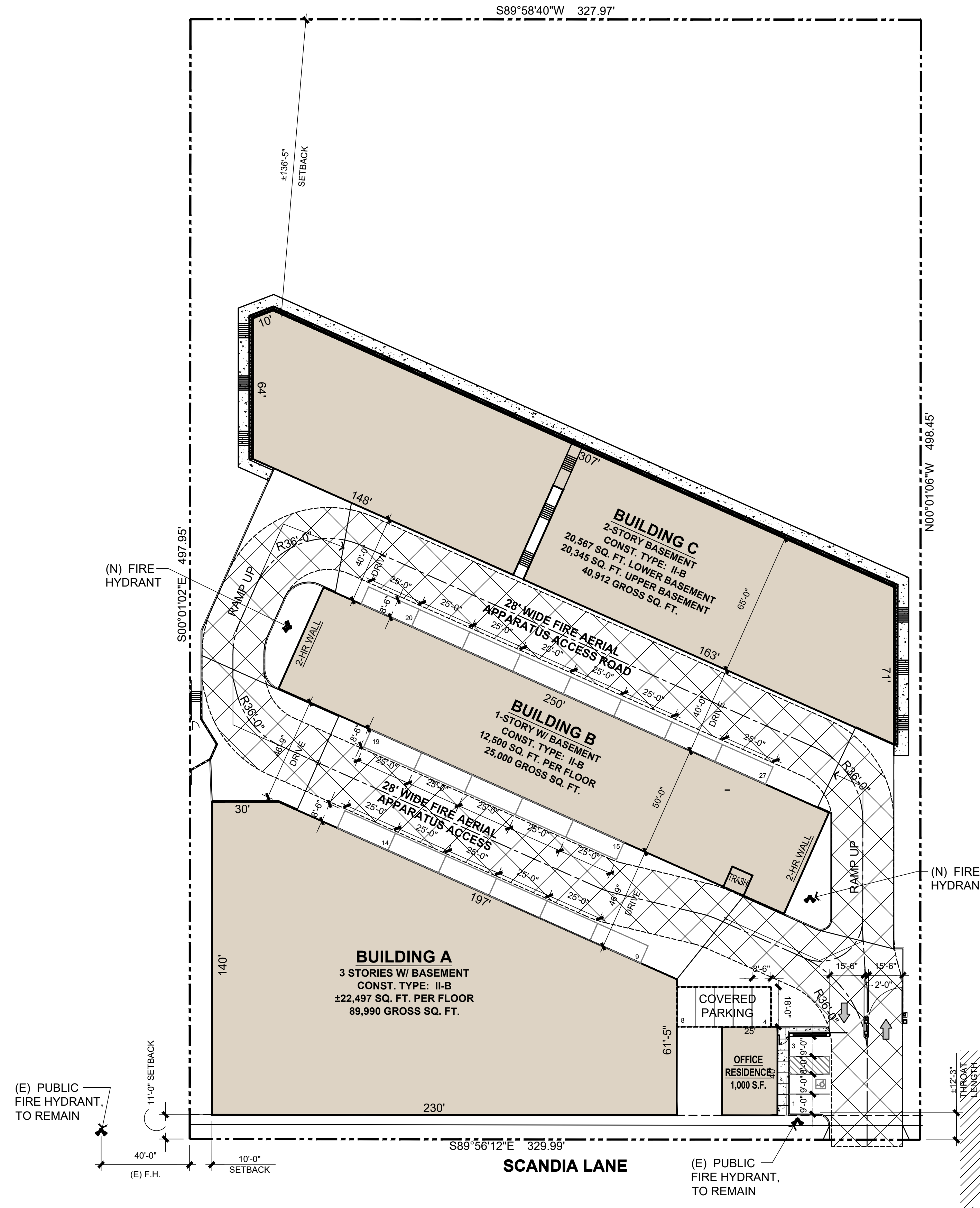
THIS DRAWING AND ITS CONTENTS ARE INSTRUMENTS OF SERVICE AND ARE THE COPYRIGHTED PROPERTY OF JORDAN ARCHITECTS, INC. THE USE IS EXPRESSLY INTENDED FOR THE PROJECT NOTED ABOVE AND MAY NOT BE REUSED OR REPRODUCED IN WHOLE OR IN PART WITHOUT THE WRITTEN PERMISSION OF JORDAN ARCHITECTS, INC. ©COPYRIGHT YEAR OF FIRST PUBLICATION 2020 JORDAN ARCHITECTS, INC.

JOB NUMBER: 19-506  
SCALE: 1"=30'-0"  
DATE: 03/24/2021

*ja*  
**JORDAN ARCHITECTS**  
131 CALLE IGLESIA, SUITE 100  
SAN CLEMENTE, CA 92672  
949.388.8090



SITE DATA	
APPLICANT INFORMATION:	TROJAN STORAGE 1732 AVIATION BLVD., SUITE #217 REDONDO BEACH, CA 90278 PH: (310) 372-8600 CONTACT: BRETT HENRY
SITE ADDRESS:	5050 OLD SCANDIA LANE CALABASAS, CA
ASSESSOR'S PARCEL NUMBER:	2049-022-040



### FIRE NOTES

1. ALL ON-SITE FIRE APPARATUS ACCESS ROADS SHALL BE LABELED AS "PRIVATE DRIVEWAY AND FIRE LANE". LABELING IS NECESSARY TO ASSURE THE ACCESS AVAILABILITY FOR FIRE DEPARTMENT USE. THE DESIGNATION ALLOWS FOR APPROPRIATE SIGNAGE PROHIBITING PARKING.
2. FIRE APPARATUS ACCESS ROADS MUST BE INSTALLED AND MAINTAINED IN A SERVICEABLE MANNER PRIOR TO AND DURING THE TIME OF CONSTRUCTION. FIRE CODE 501.4
3. ALL FIRE HYDRANTS SHALL MEASURE 6"X 4"X -1/2" BRASS OR BRONZE, CONFORMING TO CURRENT AWWA STANDARD C503 OR APPROVED EQUAL, AND SHALL BE INSTALLED IN ACCORDANCE WITH THE COUNTY OF LOS ANGELES FIRE DEPARTMENT C105.1 CFC.
4. ALL REQUIRED PUBLIC FIRE HYDRANTS SHALL BE INSTALLED, TESTED AND ACCEPTED PRIOR TO BEGINNING CONSTRUCTION. FIRE CODE 501.4

## TROJAN STORAGE

1732 AVIATION BLVD., SUITE #217  
REDONDO BEACH, CA 90278

# TROJAN CALABASAS

## LOS ANGELES COUNTY, CA

# FIRE ACCESS PLAN

THIS DRAWING AND ITS CONTENTS ARE INSTRUMENTS OF SERVICE AND ARE THE COPYRIGHTED PROPERTY OF JORDAN ARCHITECTS, INC. THE USE IS EXPRESSLY INTENDED FOR THE PROJECT NOTED ABOVE AND MAY NOT BE REUSED OR REPRODUCED IN WHOLE OR IN PART WITHOUT THE WRITTEN PERMISSION OF JORDAN ARCHITECTS, INC. "COPYRIGHT" YEAR OF FIRST PUBLICATION 2020 JORDAN ARCHITECTS, INC.

JOB NUMBER: 19-506  
SCALE: 1"=30'-0"  
DATE: 03/24/2021

NORTH

*ja*

**JORDAN ARCHITECTS**  
131 CALLE IGLESIA, SUITE 100  
SAN CLEMENTE, CA 92672  
949.388.8090

## SHEET A21