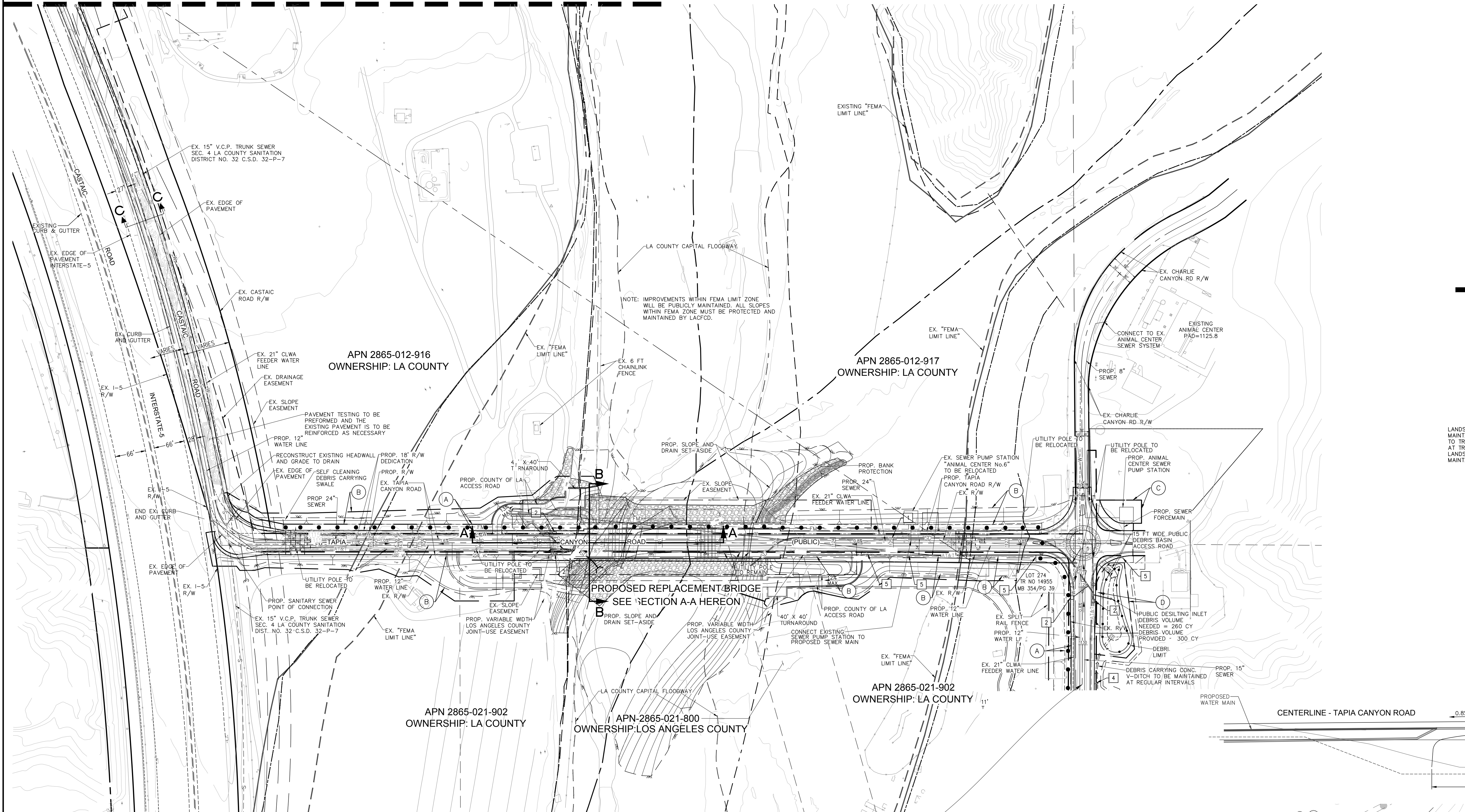
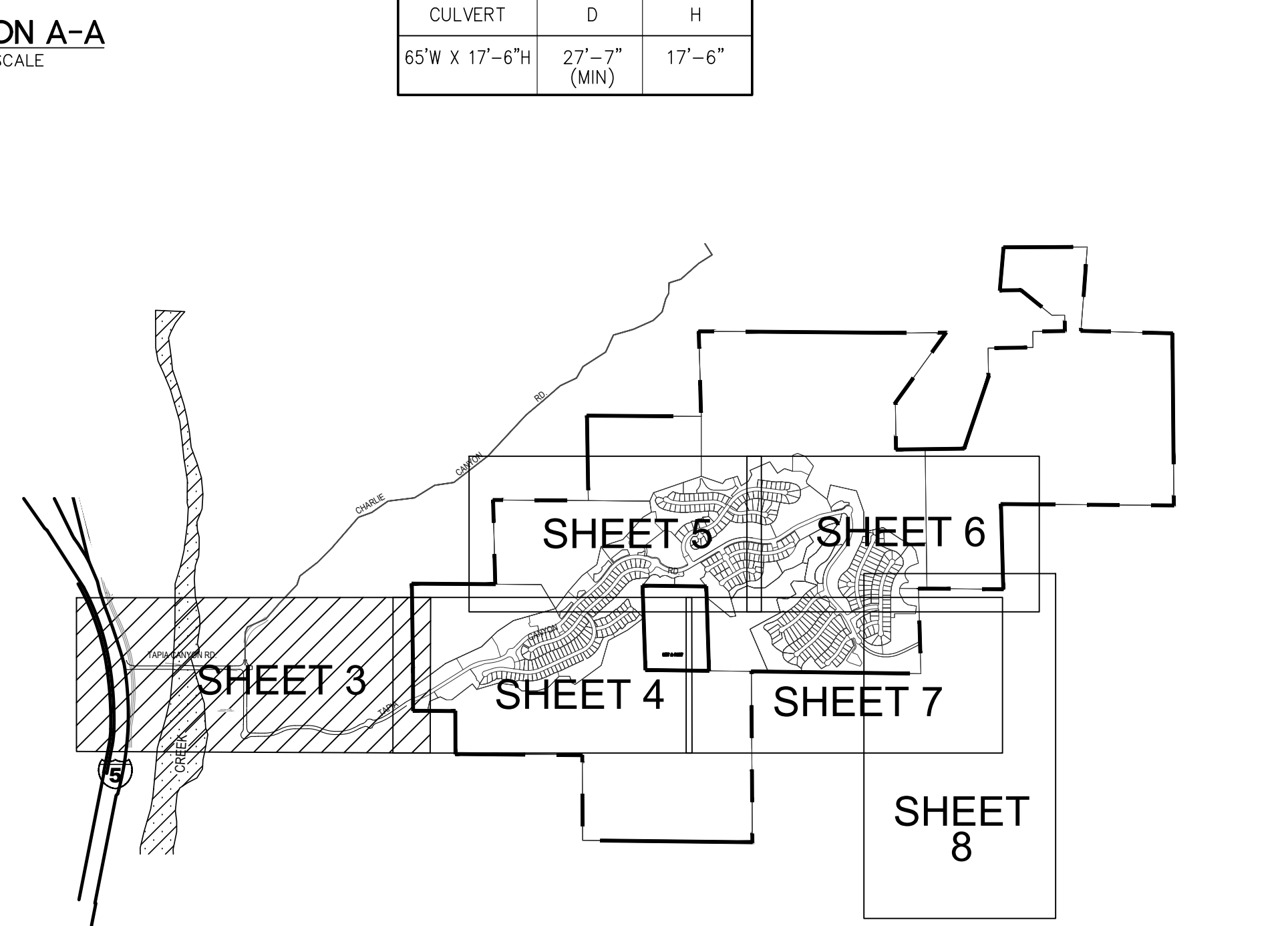
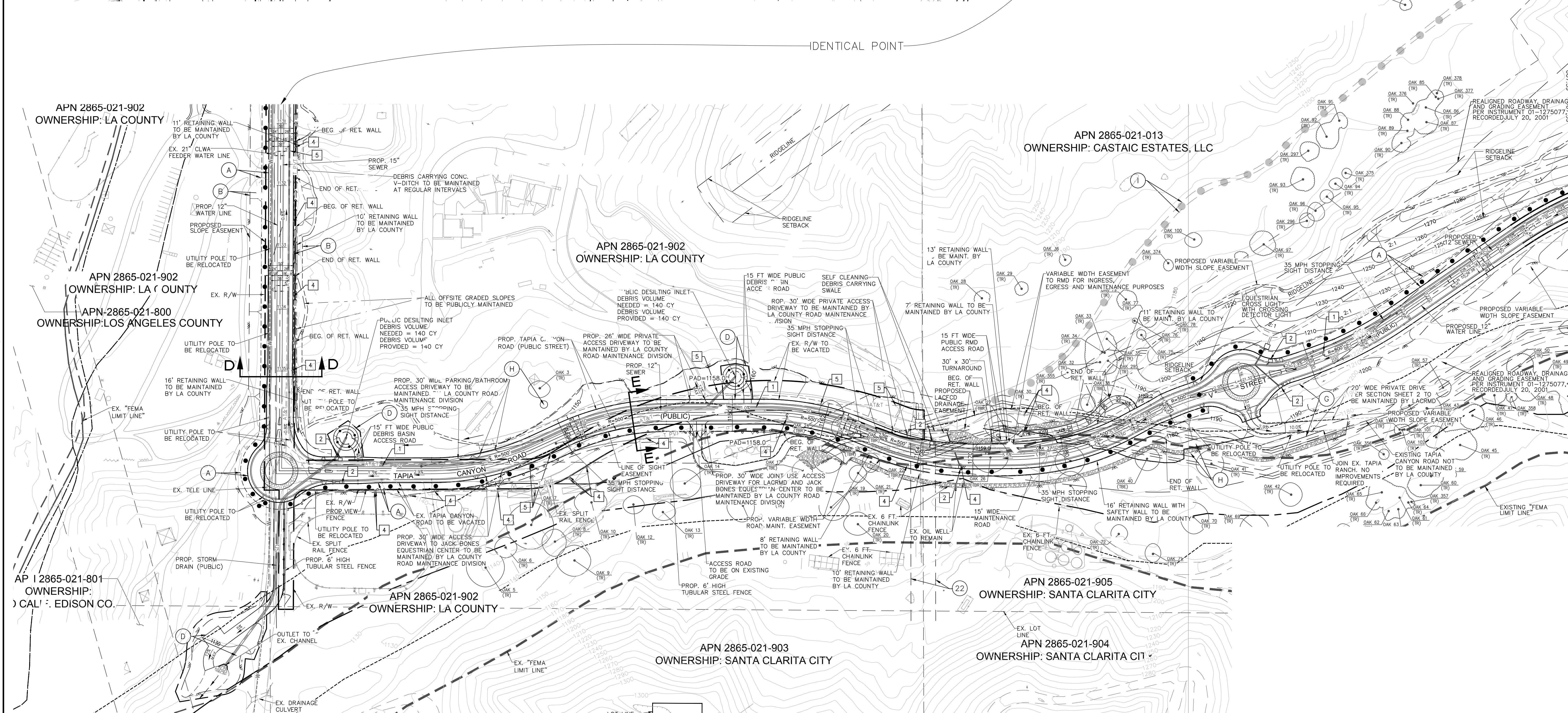
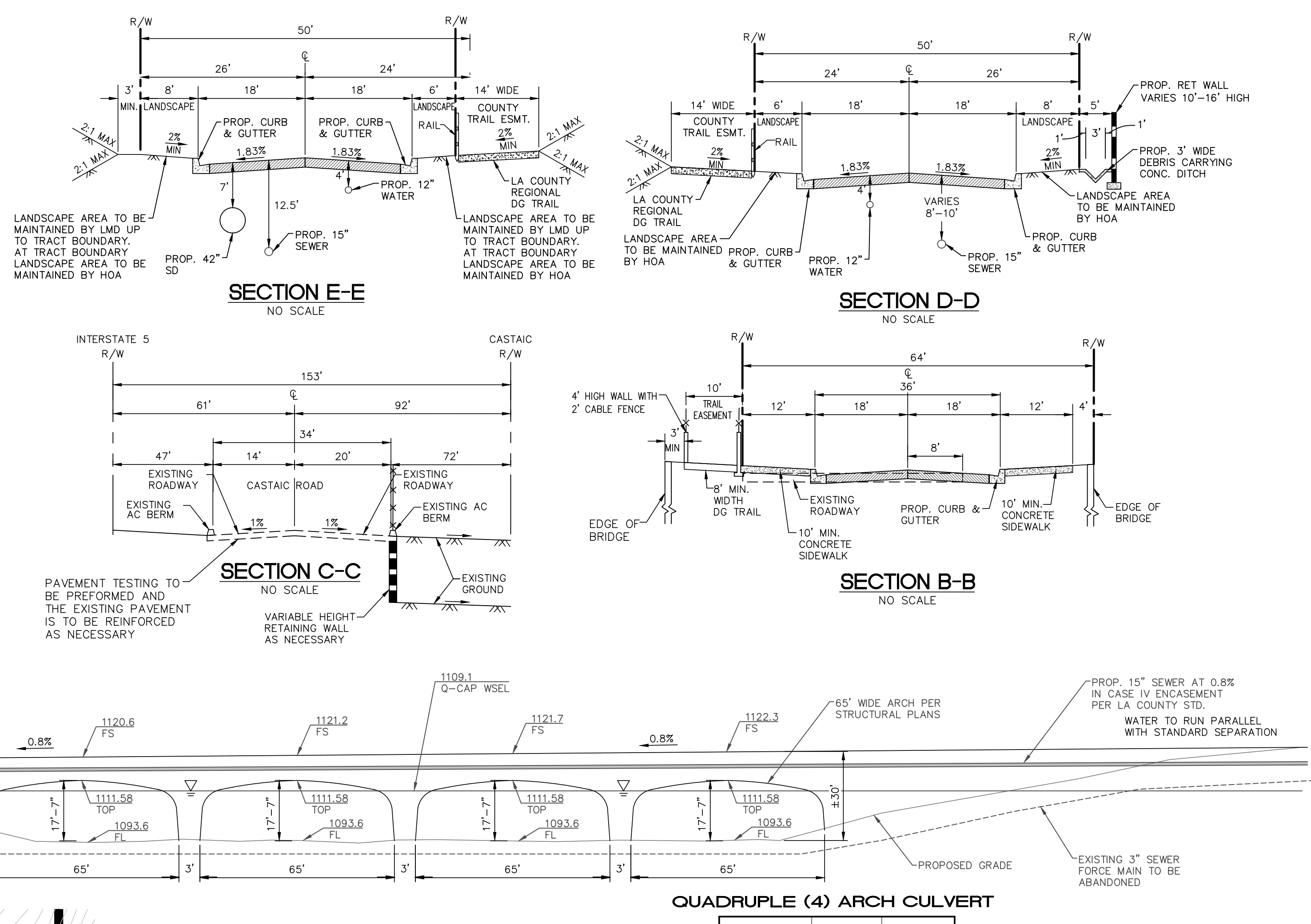


MATCH LINE - SEE AT RIGHT



MATCH LINE - SEE AT LEFT



NOTES:

- PROPOSED STORM DRAIN LINE
- PROPOSED WATER QUALITY UNIT
- BIOFILTRATION BASIN PUBLICLY MAINTAINED
- EXISTING UTILITY POLE TO BE REMOVED
- EXISTING UTILITY POLE TO REMAIN
- PROPOSED FEE-TITLE LOT TO LACFD
- BULK FLOW INLET STRUCTURE TO BE MAINTAINED BY L.A.C.F.C.D.
- PROPOSED RIGHT-OF-WAY
- PROPOSED SIDEWALK
- DECOMPOSED GRANITE MULTI-USE TRAIL

LEGEND:

