

ZONING CASE NUMBER 2022-003557-(1,5)

ORDINANCE NUMBER _____

An ordinance amending the Los Angeles County Code, Title 22 – Planning and Zoning, Section 22.06.060, changing regulations for the execution of the East San Gabriel Valley Area Plan, a component of the Los Angeles County General Plan, relating to the Azuza-Glendora Zoned District No. 61, Charter Oak Zoned District No. 87, Covina, Highlands Zoned District No. 45, Five Points Zoned District No. 99, Hacienda Heights Zoned District No. 126, Irwindale Zoned District No. 35, North Claremont Zoned District No. 79, Puente Zoned District No. 76, San Dimas Zoned District No. 70, San Jose Zoned District No. 21, South El Monte Zoned District No. 96, Walnut Zoned District No. 52, Whittier Narrows Zoned District No. 108, and Workman Mill Zoned District No. 97.

The Board of Supervisors of the County of Los Angeles ordains as follows:

SECTION 1. Section 22.06.060 of the County Code is amended by amending the maps of the Azuza-Glendora Zoned District No. 61, Charter Oak Zoned District No. 87, Covina, Highlands Zoned District No. 45, Five Points Zoned District No. 99, Hacienda Heights Zoned District No. 126, Irwindale Zoned District No. 35, North Claremont Zoned District No. 79, Puente Zoned District No. 76, San Dimas Zoned District No. 70, San Jose Zoned District No. 21, South El Monte Zoned District No. 96, Walnut Zoned District No. 52, Whittier Narrows Zoned District No. 108, and Workman Mill Zoned District No. 97 as shown on the map attached hereto.

SECTION 2. The Board of Supervisors finds that this ordinance is consistent with the East San Gabriel Valley Area Plan, a component of the Los Angeles County General Plan.

CHANGE OF PRECISE PLAN

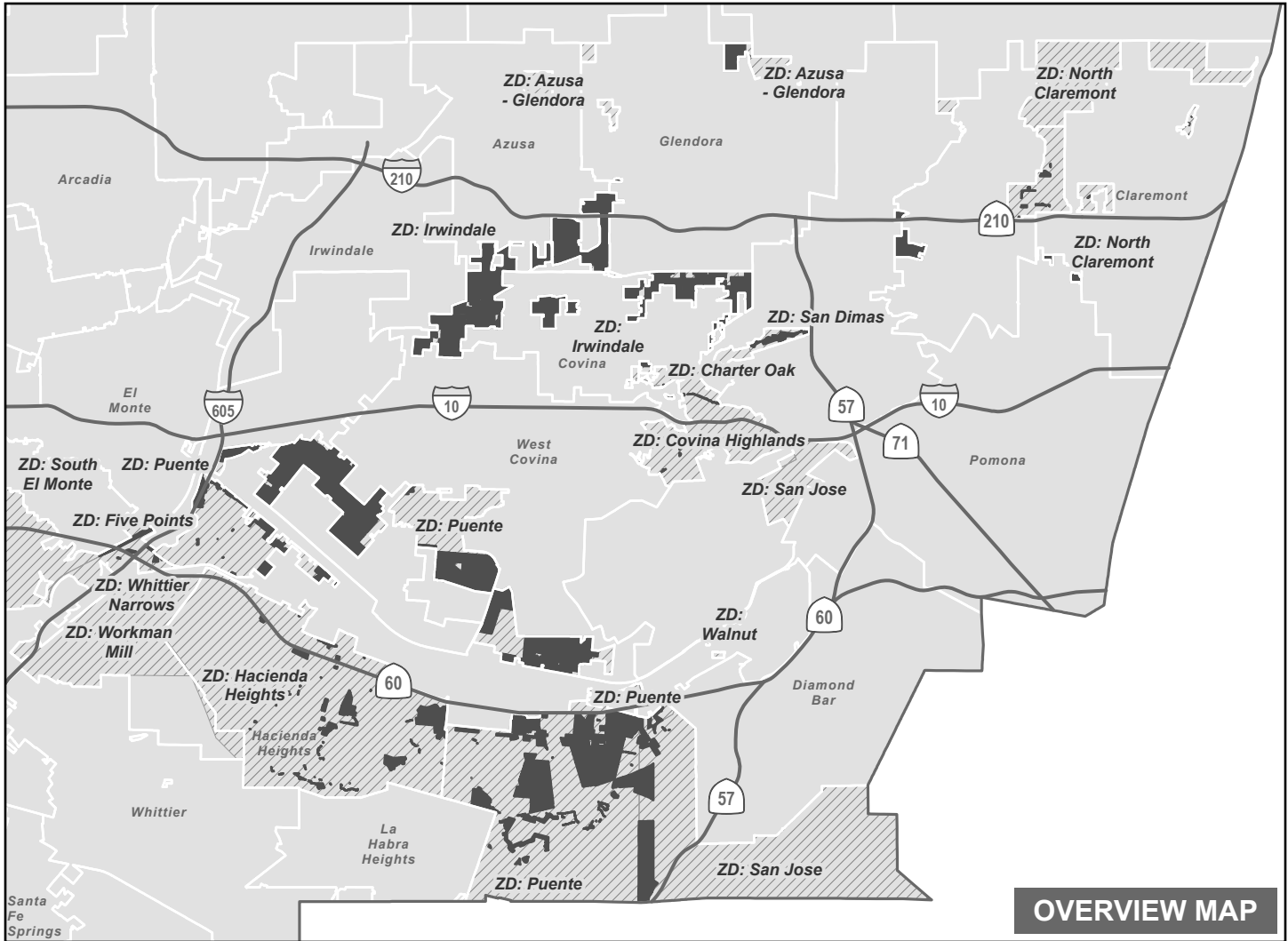
ZONED DISTRICTS: AZUSA - GLENDORA, CHARTER OAK, COVINA HIGHLANDS, FIVE POINTS, HACIENDA HEIGHTS, IRWINDALE, NORTH CLAREMONT, PUENTE, SAN DIMAS, SAN JOSE, SOUTH EL MONTE, WALNUT, WHITTIER NARROWS, WORKMAN MILL

ADOPTED BY ORDINANCE: _____

ON: _____

ZONING CASE: RPPL2022003557

AMENDING SECTION: 22.06.060 OF THE COUNTY CODE



— Freeway

■ Zone Change Area



Selected Zoned District (ZD)



City / Unincorporated Boundary

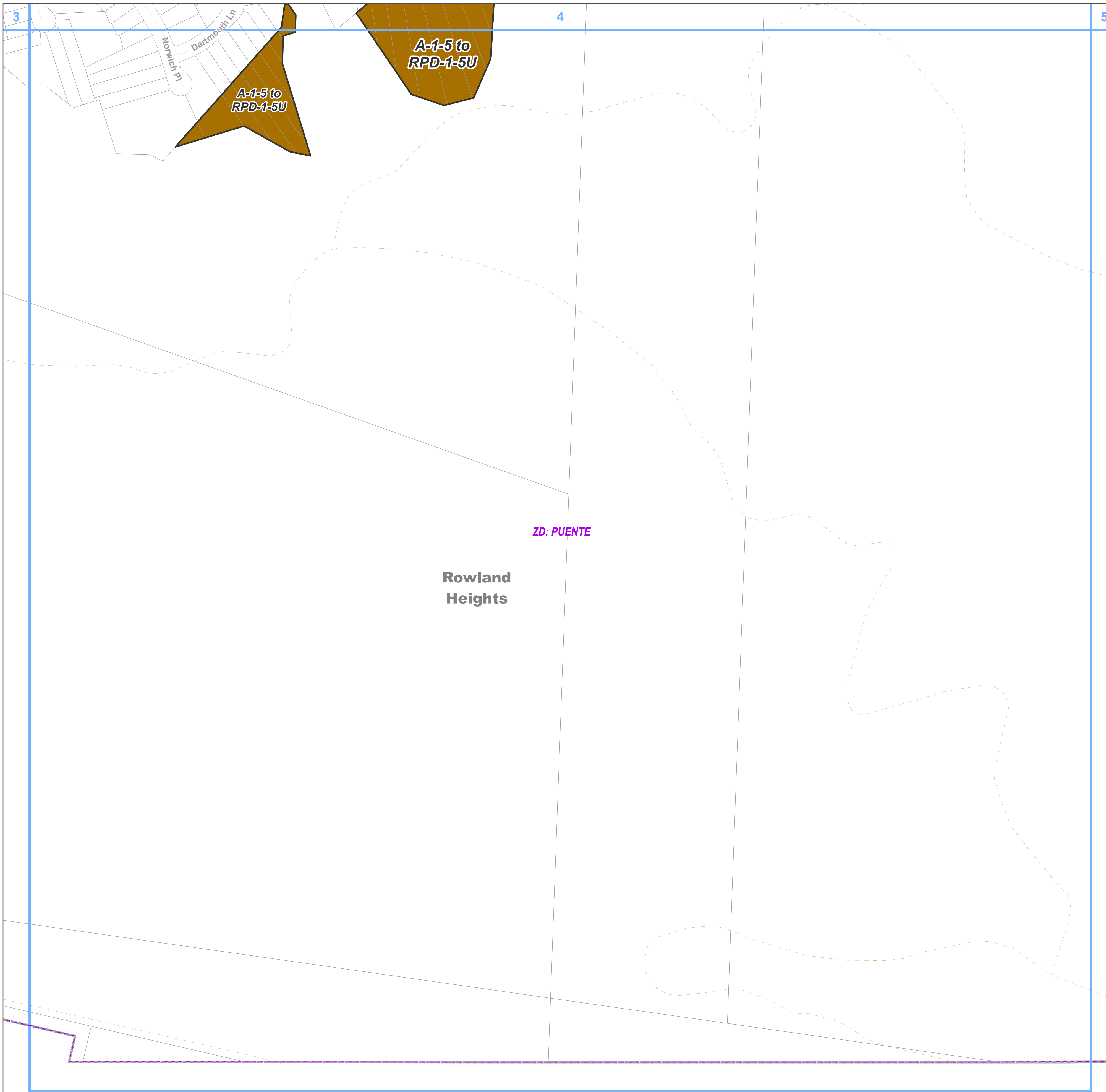


0 1.5 3



Miles

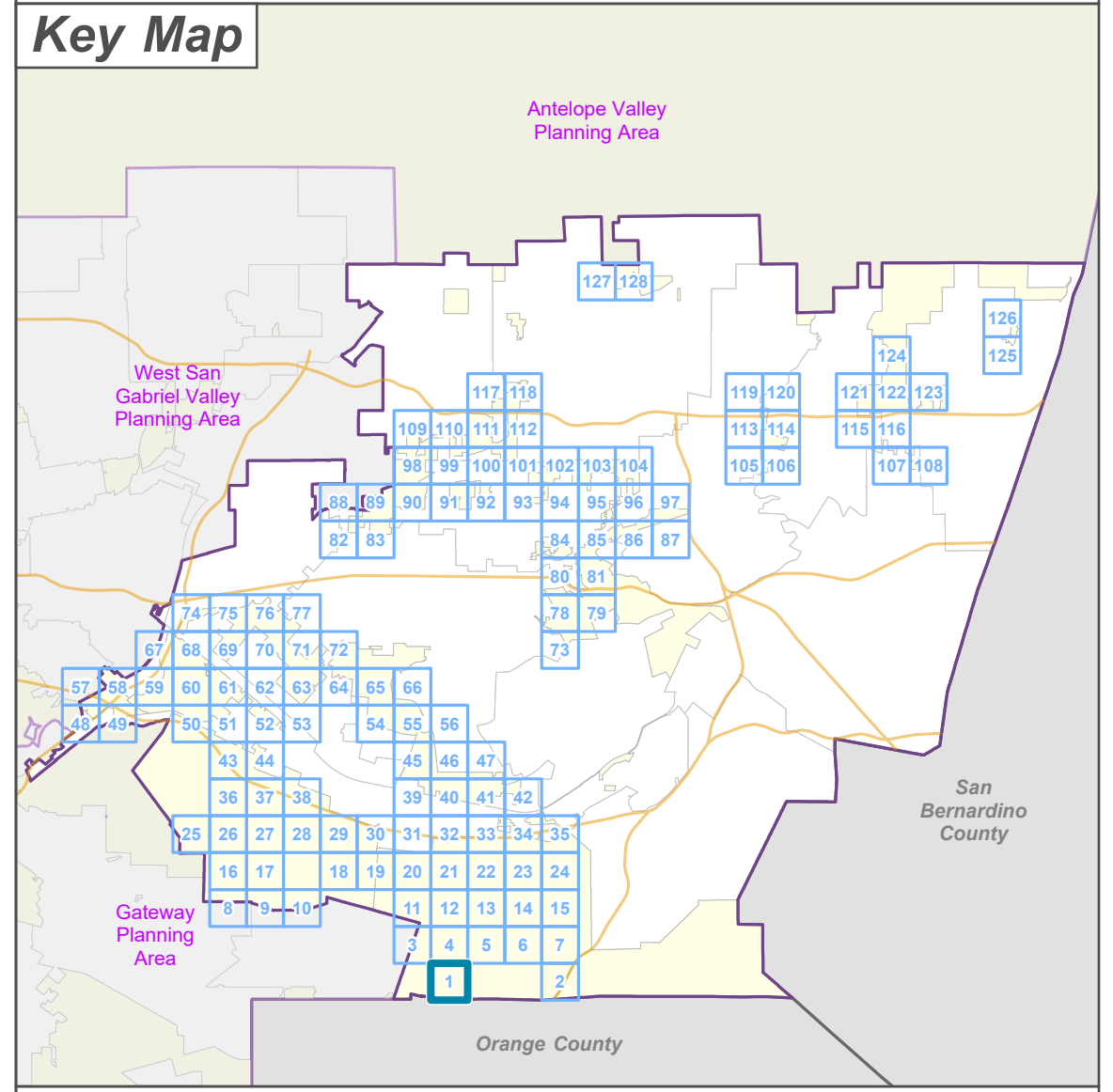
THE REGIONAL PLANNING COMMISSION
COUNTY OF LOS ANGELES
MICHAEL R. HASTINGS, CHAIR
AMY J. BODEK, AICP, DIRECTOR OF REGIONAL PLANNING



Zone Change
 RPD - Residential Planned Development

Base Layers
 Zoned District
 Parcels
 Unincorporated Area
 Map Series Grid

Street Types
 Minor
 Trail



**LA COUNTY
 PLANNING**

LOS ANGELES COUNTY
 Dept. of Regional Planning
 320 W. Temple St.
 Los Angeles, CA 90012

Feet
 0 200 400

Prepared by DRP GIS Section / August 2023


East San Gabriel Valley Planning Area Zone Changes

Zoned District(s): Puente, San Jose

Zone Change


 A-1 - Light Agriculture

Base Layers

 Zoned District

 Parcels

 Unincorporated Area

 Map Series Grid

Street Types

 Freeway

 Primary

 Minor

A-2-1 to
A-1-5

Rowland
Heights

ZD: SAN JOSE

Brea Canyon Rd

South
Diamond Bar



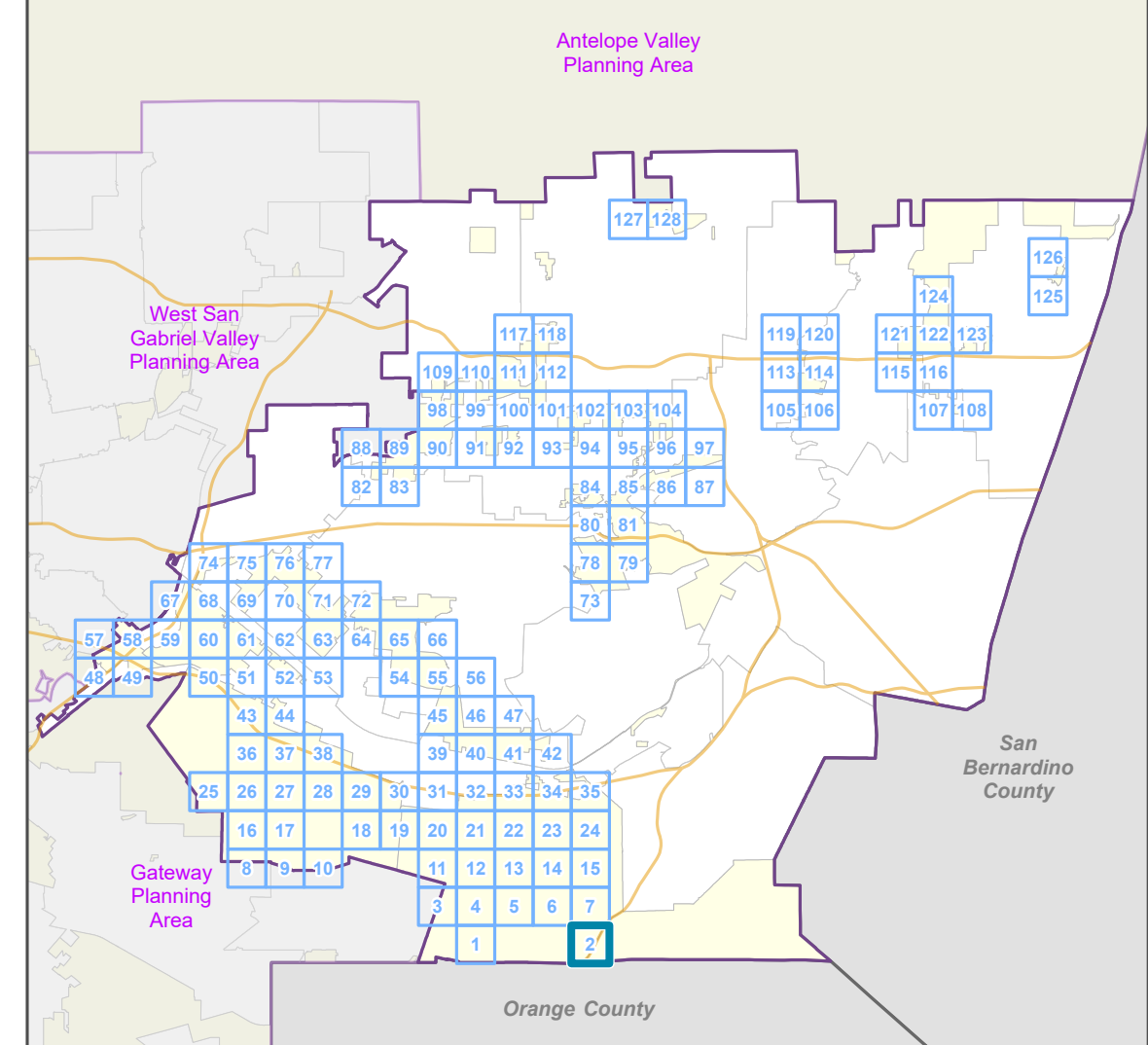
Brea Canyon Rd

Brea Canyon Rd

Brea Canyon Rd

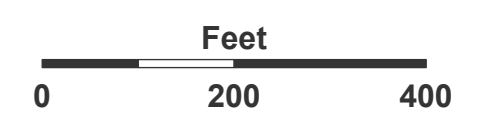
ZD: PUENTE

Key Map



LA COUNTY
PLANNING

LOS ANGELES COUNTY
Dept. of Regional Planning
320 W. Temple St.
Los Angeles, CA 90012





Prepared by DRP GIS Section / August 2023





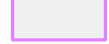
East San Gabriel Valley Planning Area Zone Changes

Zoned District(s): Puente





Zone Change

-  RPD - Residential Planned Development
-  O-S - Open Space

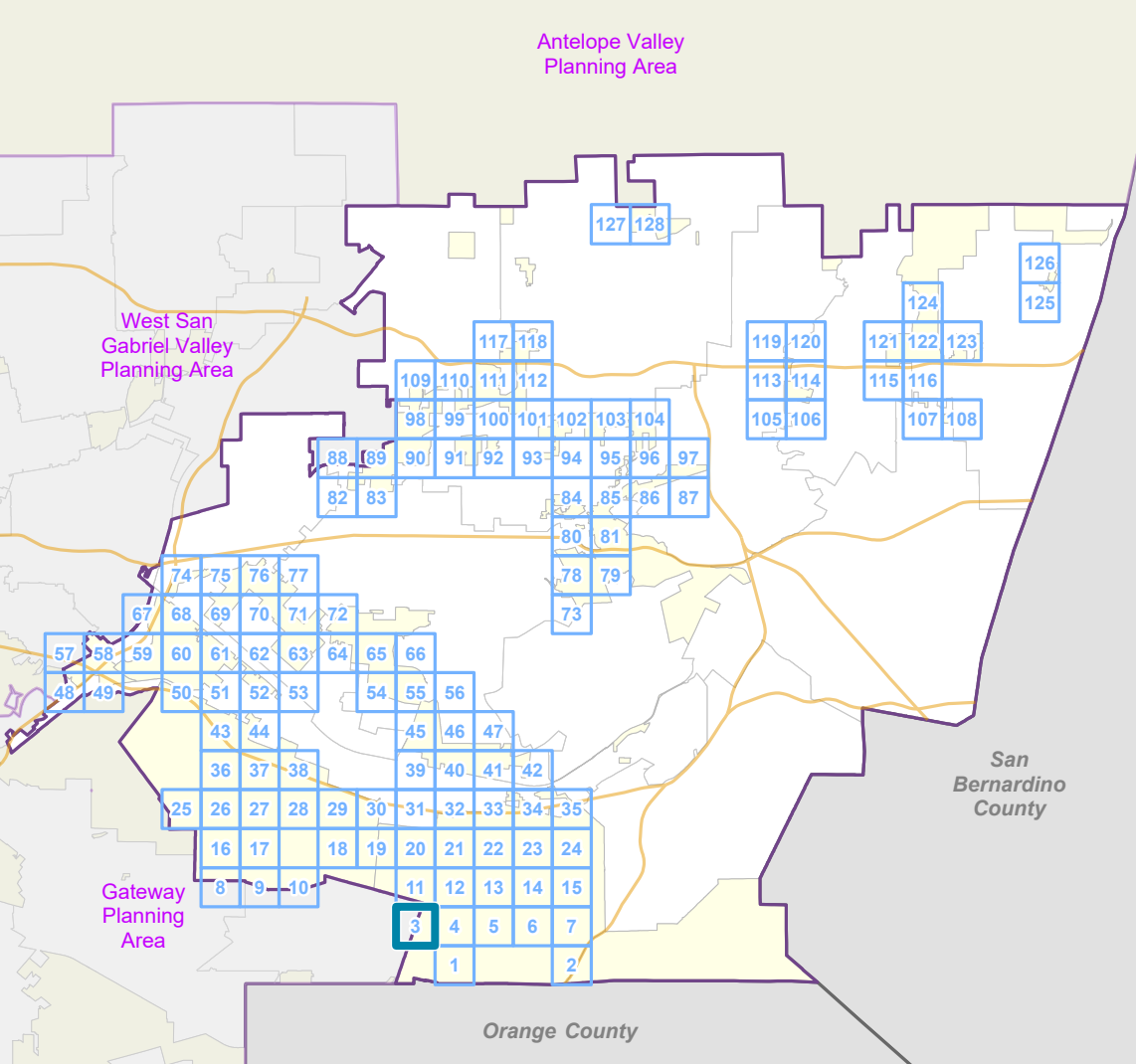
Base Layers

-  Zoned District
-  Parcels
-  Unincorporated Area
-  Map Series Grid
-  Surrounding Planning Area

Street Types

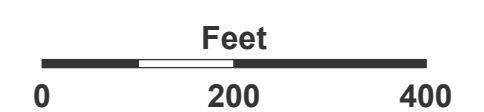
-  Primary
-  Secondary
-  Minor
-  Private Road

Key Map

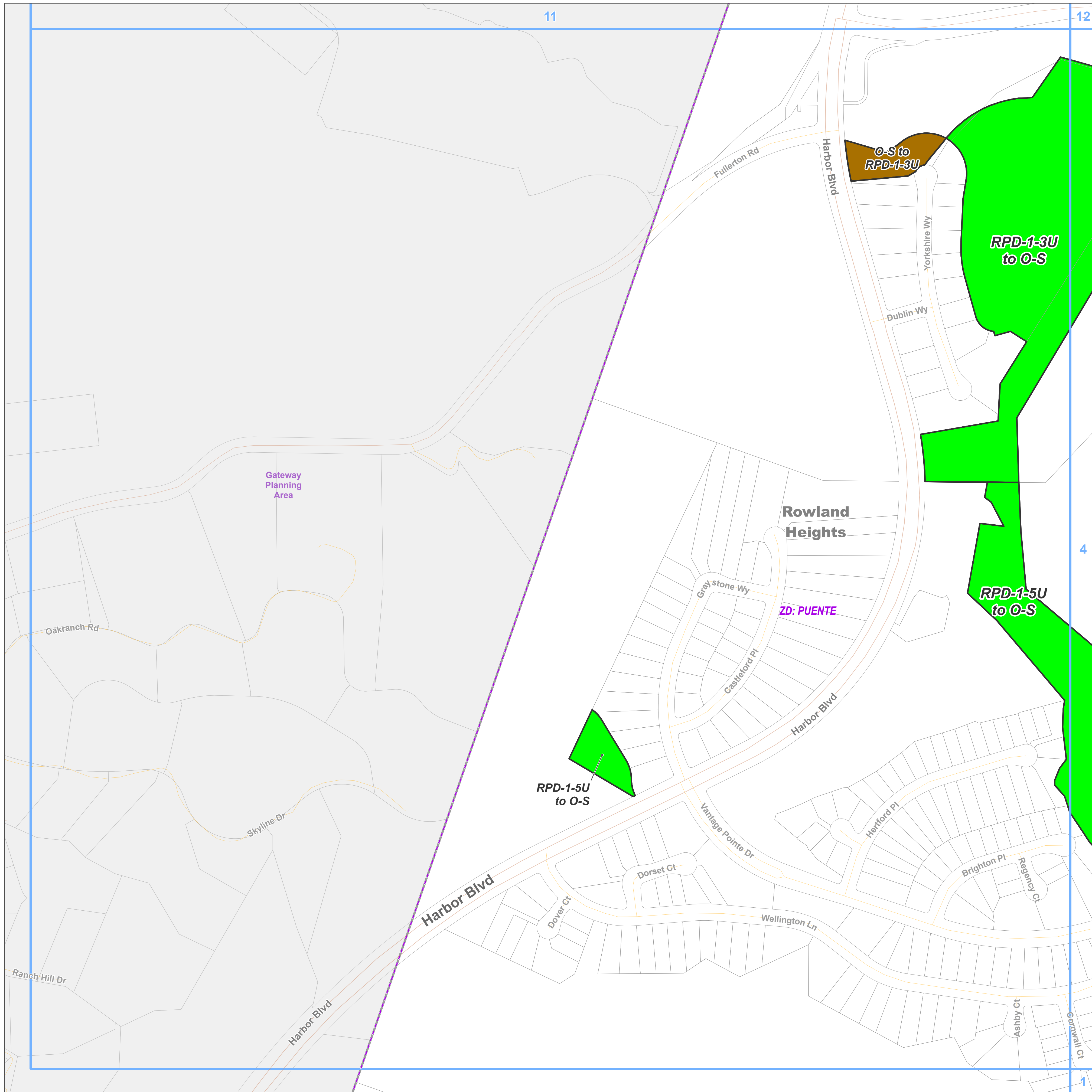


LA COUNTY
PLANNING

LOS ANGELES COUNTY
Dept. of Regional Planning
320 W. Temple St.
Los Angeles, CA 90012



Prepared by DRP GIS Section / August 2023





Zone Change

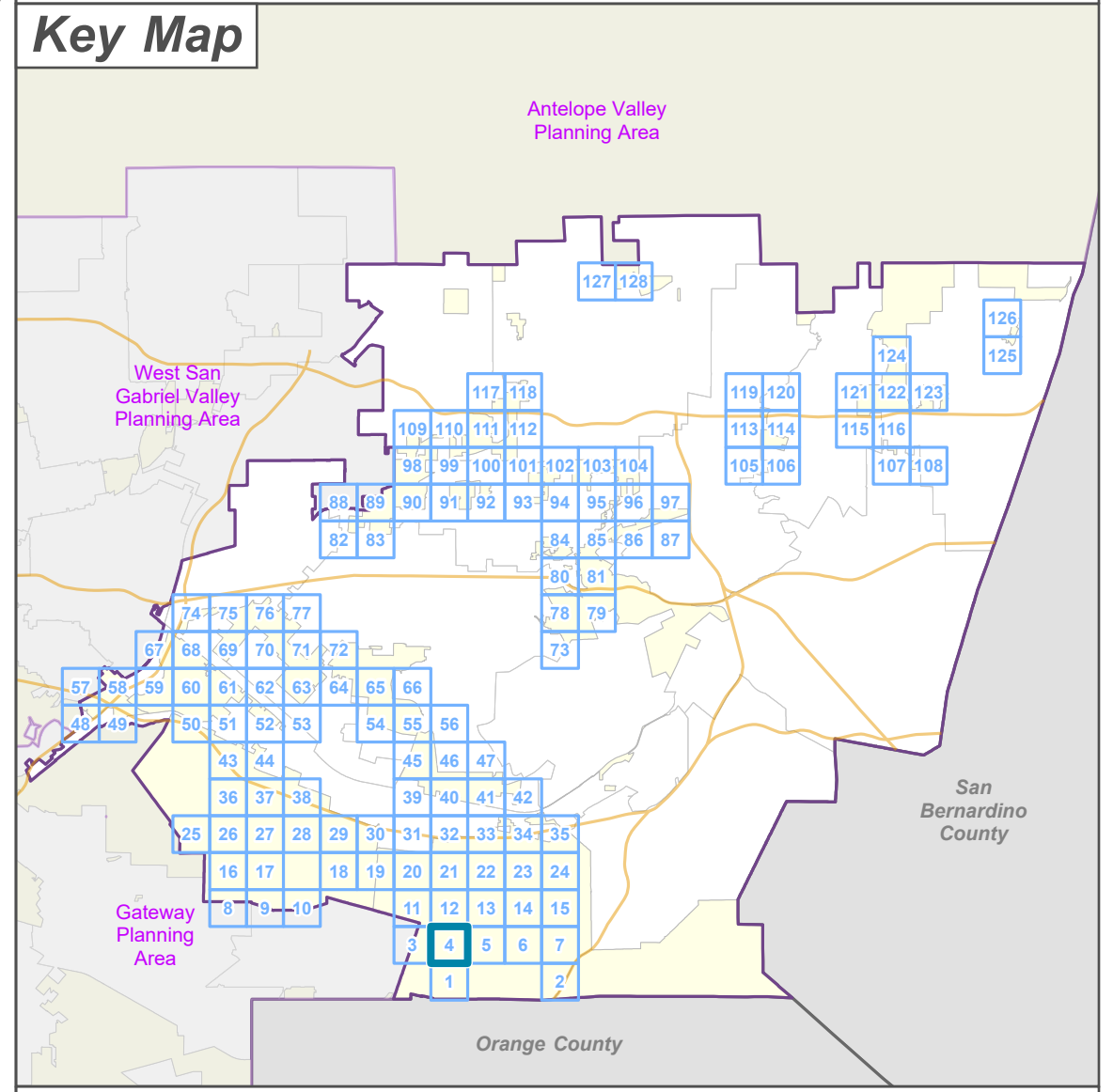

- A-1 - Light Agriculture
- RPD - Residential Planned Development
- O-S - Open Space

Base Layers

- Zoned District
- Parcels
- Unincorporated Area
- Map Series Grid

Street Types

- Secondary
- Minor
- Trail





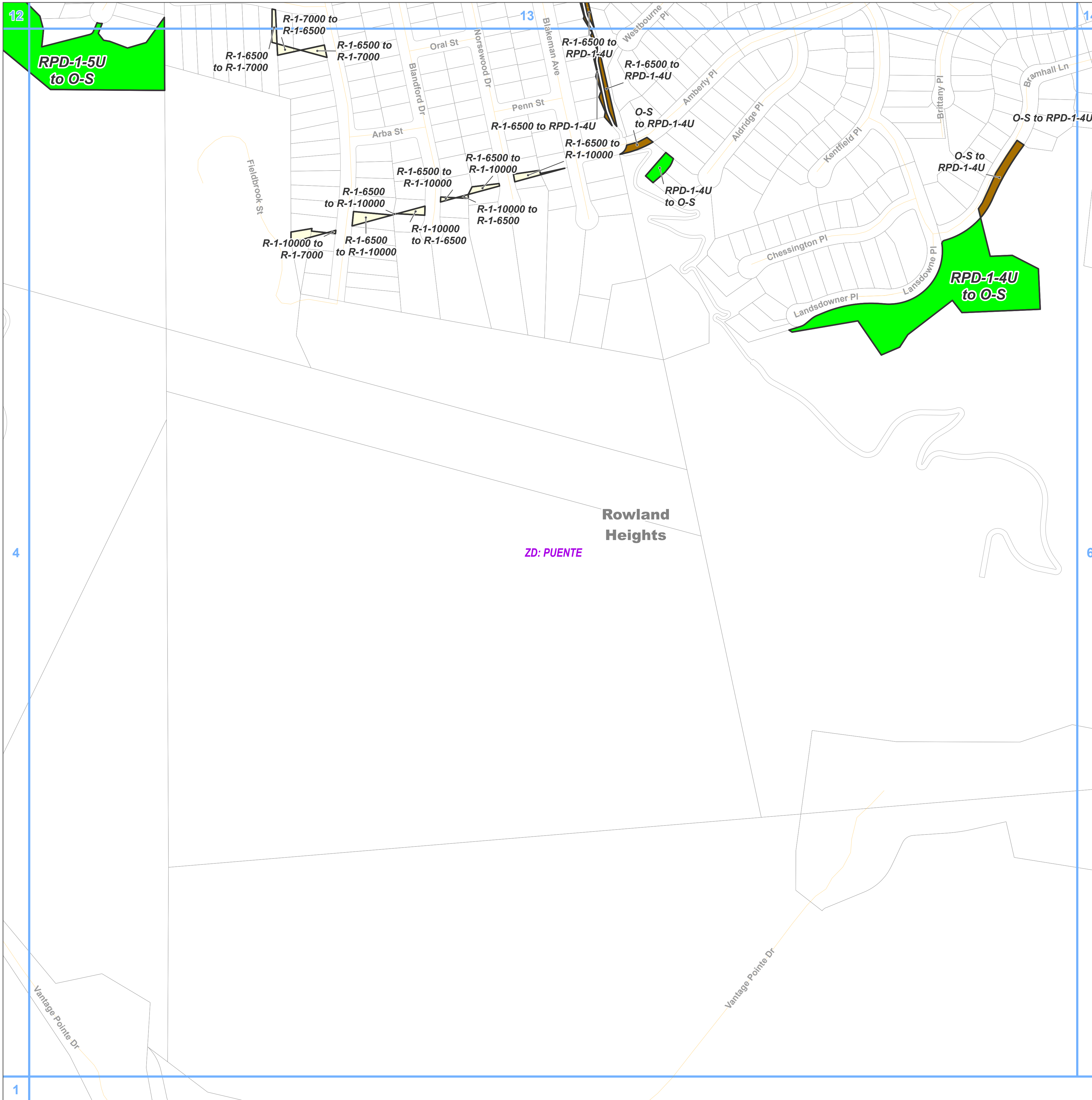
**LA COUNTY
 PLANNING**

LOS ANGELES COUNTY
 Dept. of Regional Planning
 320 W. Temple St.
 Los Angeles, CA 90012

Feet
 0 200 400

Prepared by DRP GIS Section / August 2023





**East San Gabriel Valley Planning Area
Zone Changes**

Zoned District(s): Puente

Zone Change

- R-1 - Single-Family Residence
- RPD - Residential Planned Development
- O-S - Open Space

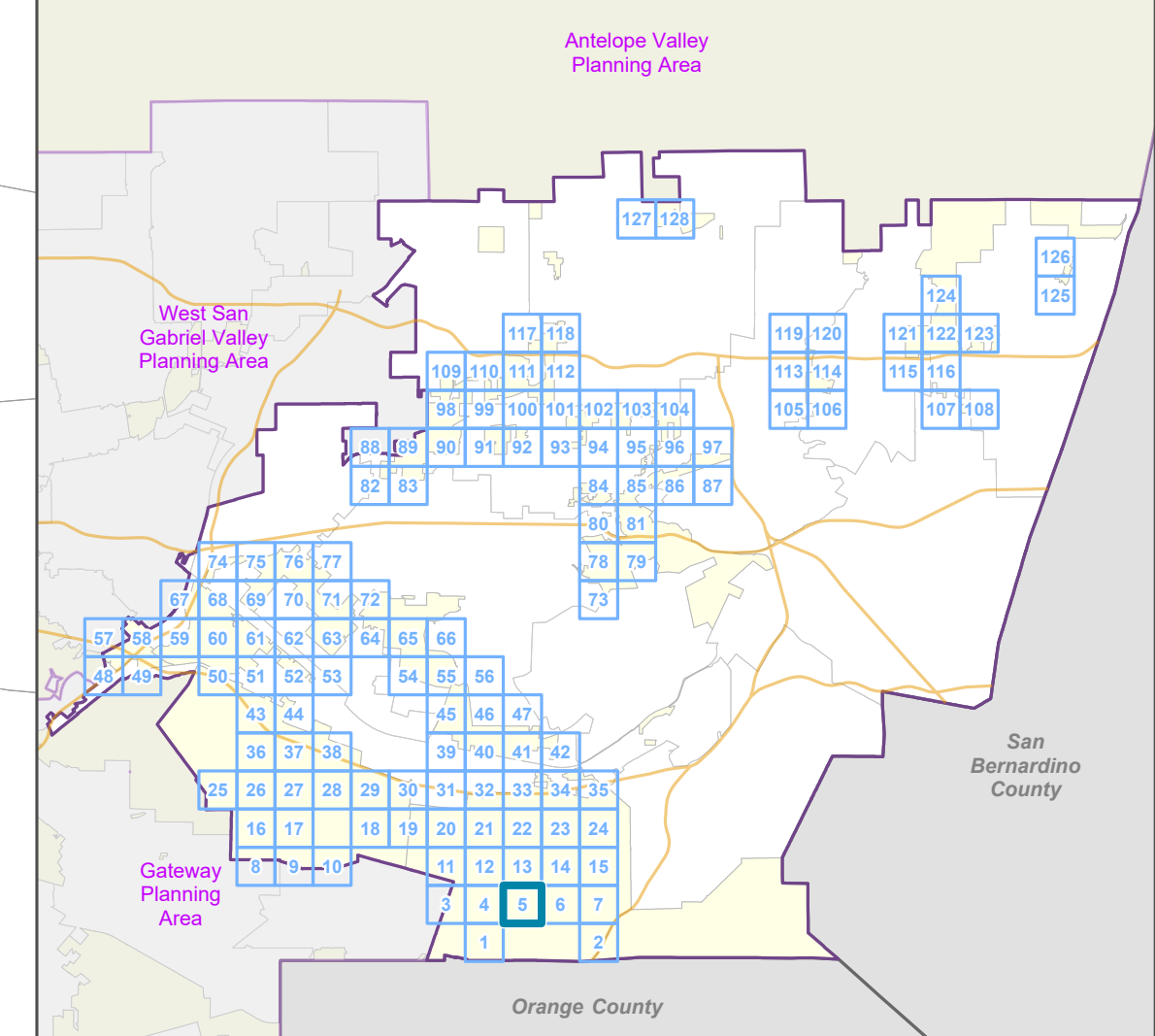
Base Layers

- Zoned District
- Parcels
- Unincorporated Area
- Map Series Grid

Street Types

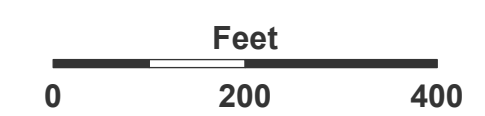
- Minor

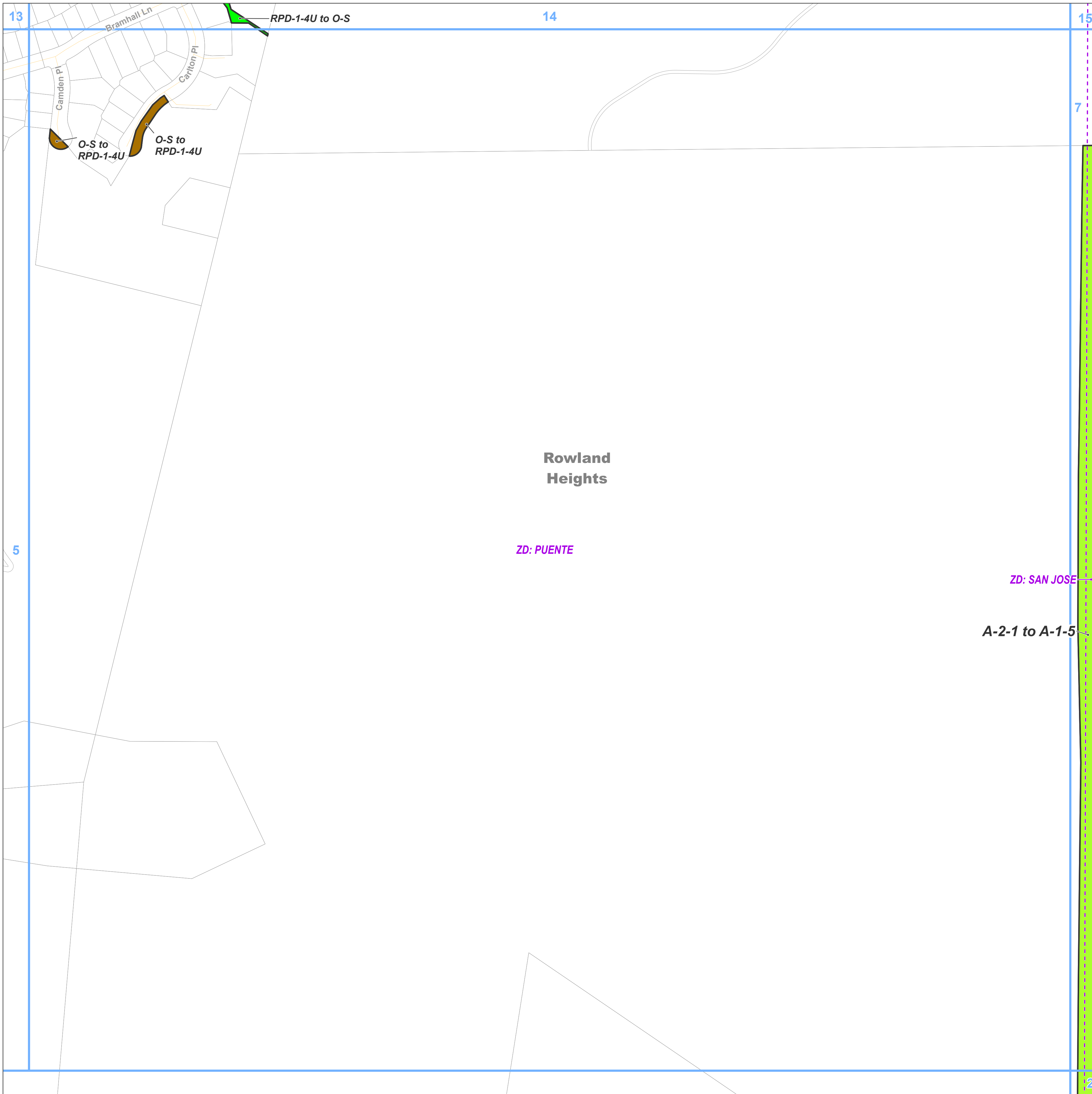
Key Map



**LA COUNTY
PLANNING**

LOS ANGELES COUNTY
Dept. of Regional Planning
320 W. Temple St.
Los Angeles, CA 90012





Zone Change

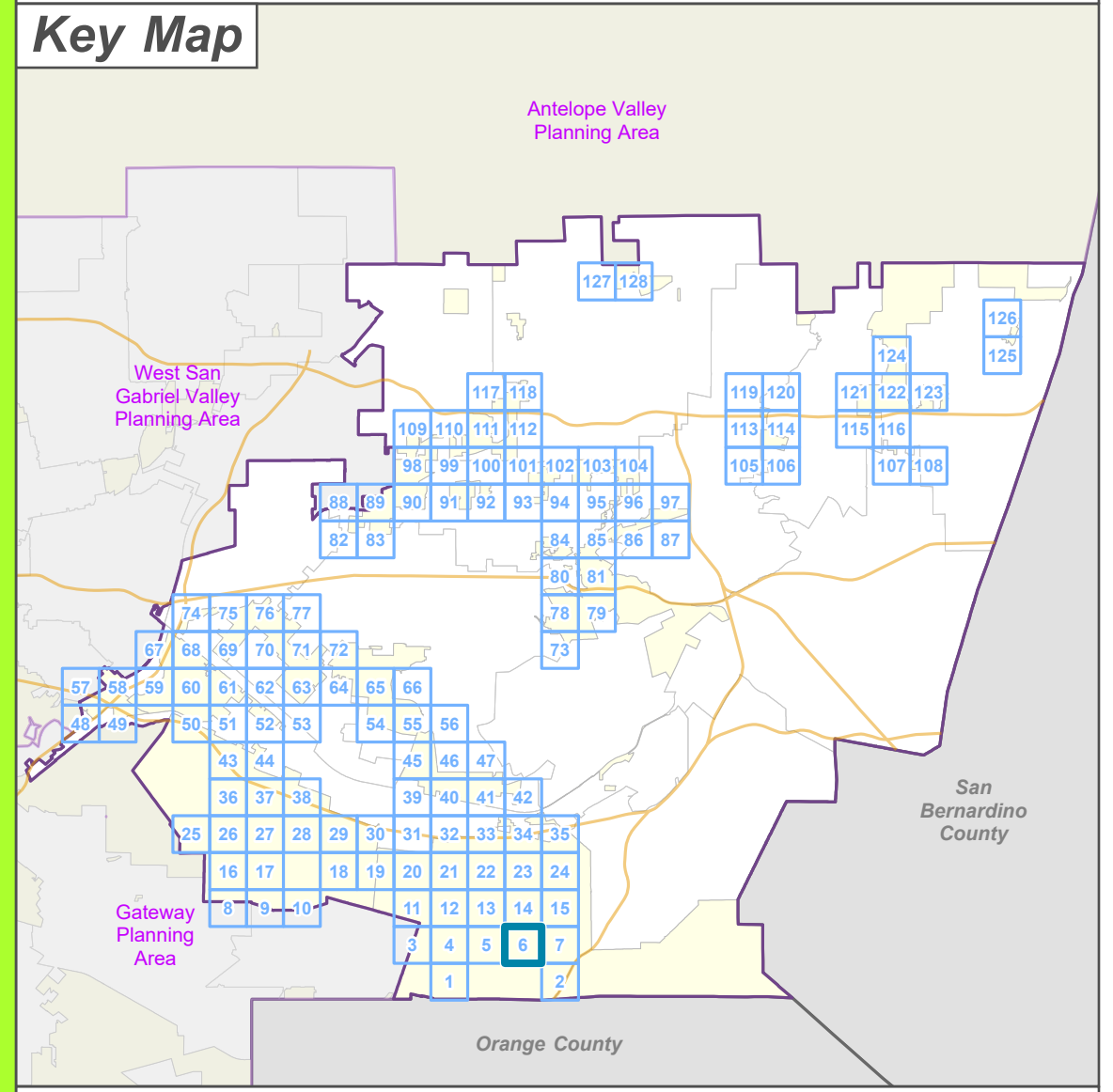
- A-1 - Light Agriculture
- RPD - Residential Planned Development
- O-S - Open Space

Base Layers

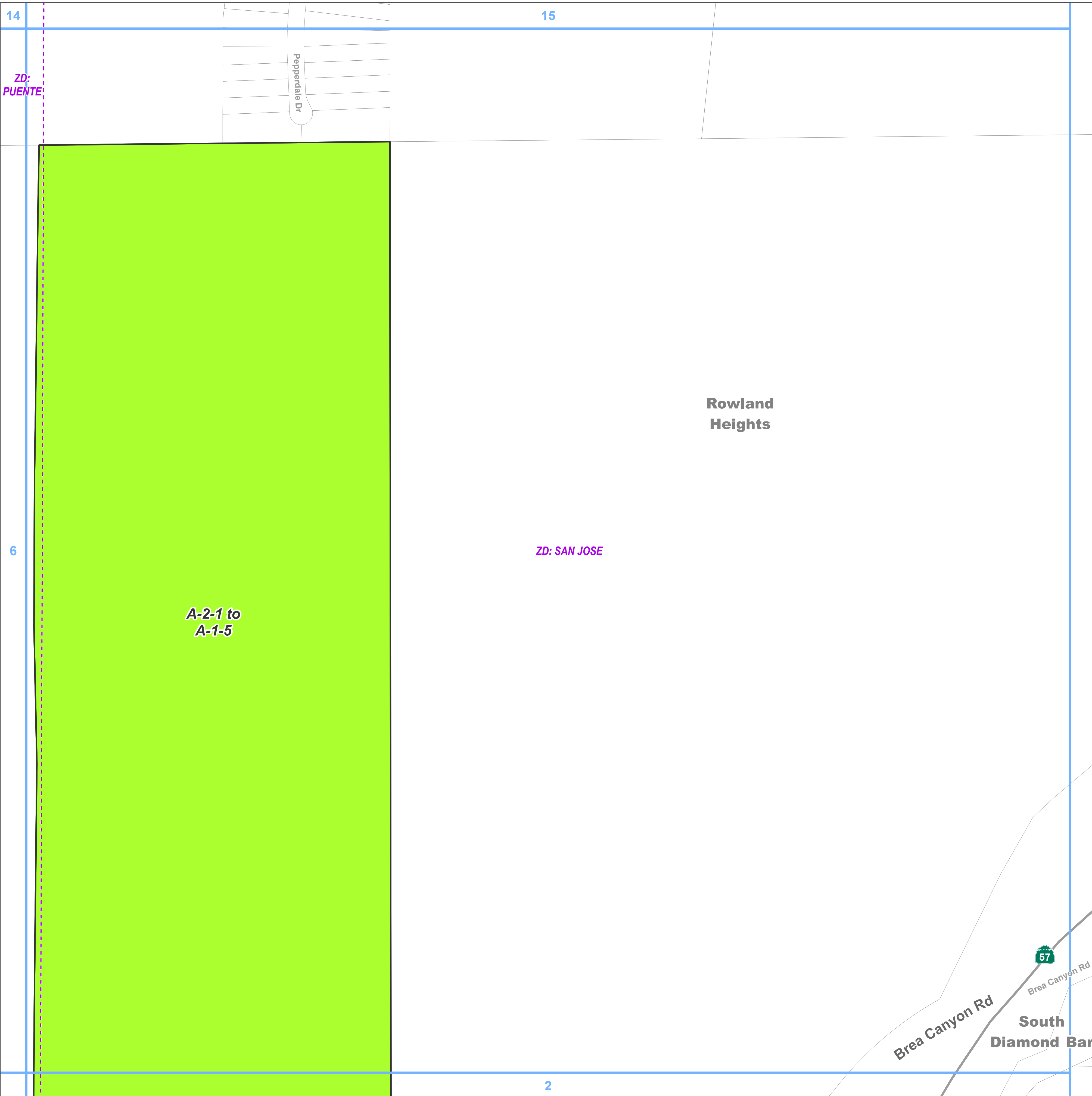
- Zoned District
- Parcels
- Unincorporated Area
- Map Series Grid

Street Types

- Minor



..I\PROJECTS\DRP_ADVANCE_PLANNING\area_plans\East_San_Gabriel_Valley\Area_Plan_Map_Series_ESGV\Area_Plan_Map_Series_ESGV_ZC_PA.aprx - ESGV Area Plan Zone Change Ordinance



Los Angeles County

**East San Gabriel Valley Planning Area
Zone Changes**

Zoned District(s): Puente, San Jose

Zone Change

A-1 - Light Agriculture

Base Layers

Zoned District

Parcels

Unincorporated Area

Map Series Grid

Street Types

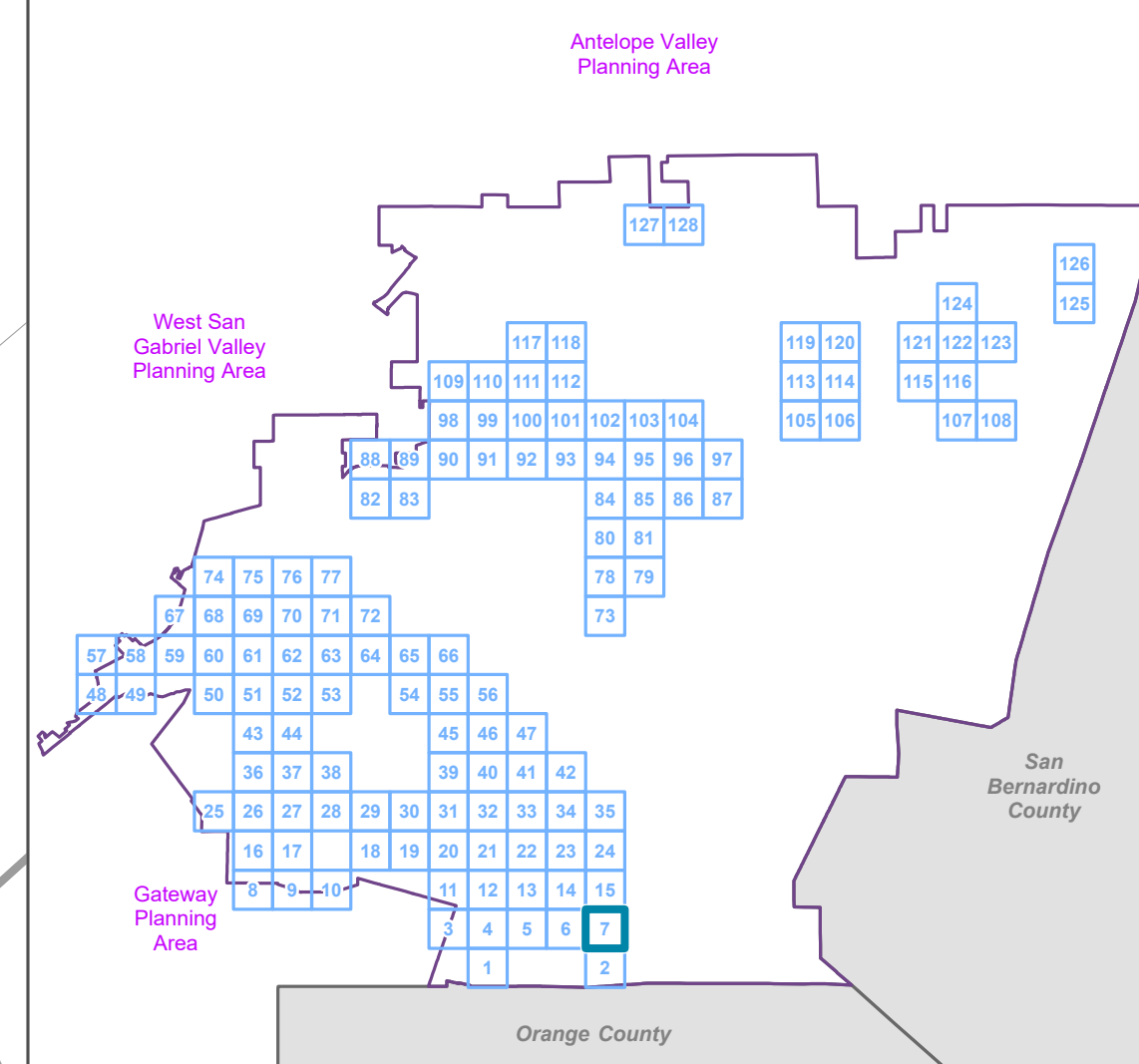
Freeway

Primary

Minor

Ramp

Key Map



**LA COUNTY
PLANNING**

LOS ANGELES COUNTY
Dept. of Regional Planning
320 W. Temple St.
Los Angeles, CA 90012



Prepared by DRP GIS Section / August 2023

