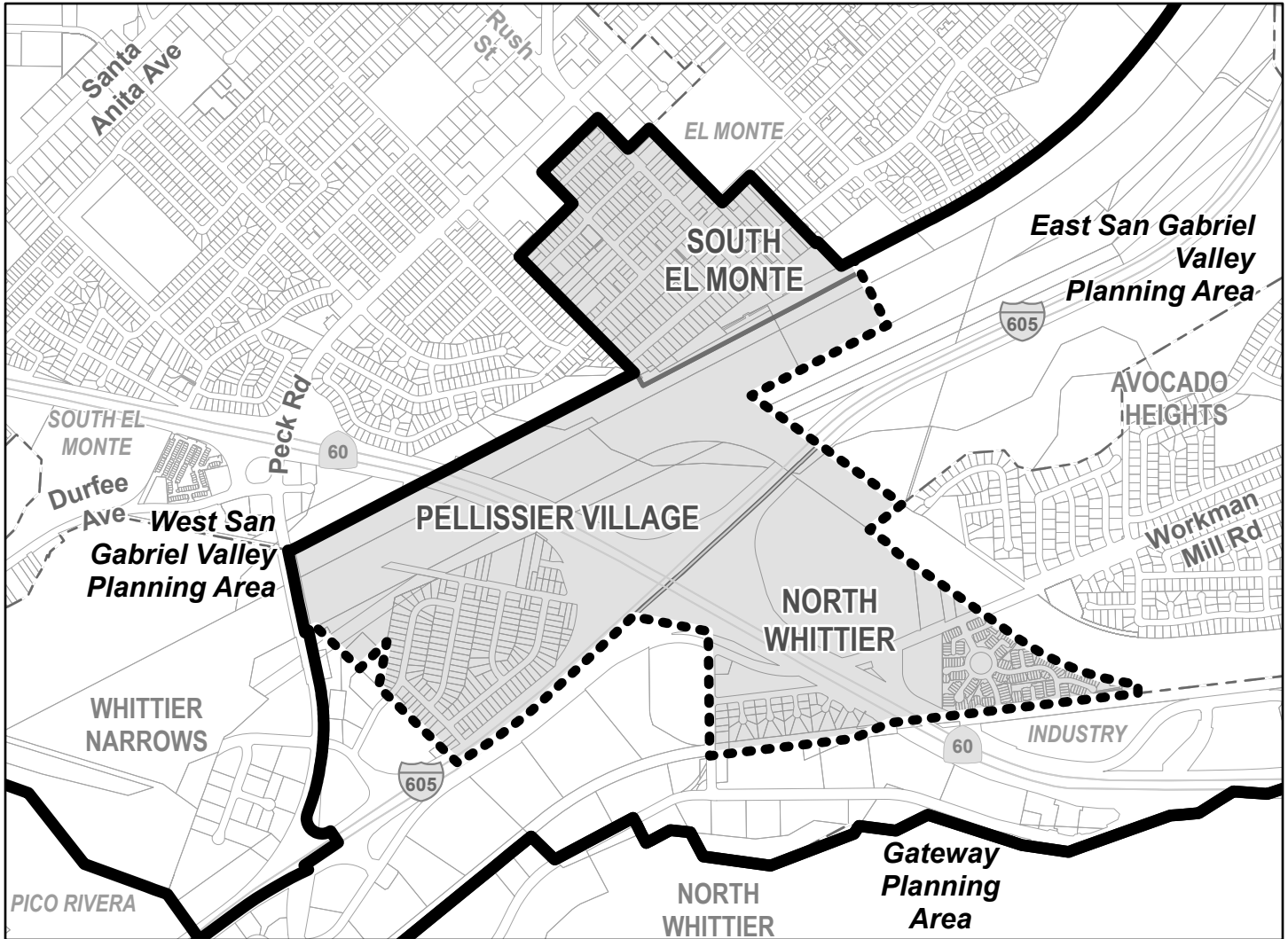






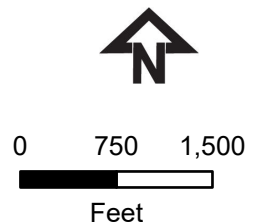
AMENDMENT TO COUNTYWIDE GENERAL PLAN
EAST SAN GABRIEL VALLEY PLANNING AREA
PLAN AMENDMENT: RPPL 2022003554
ON: _____

**REALIGNMENT OF ADOPTED PLANNING AREA BOUNDARY AROUND
 THREE NEW COMMUNITIES (FORMERLY KNOWN AS WHITTIER NARROWS)**



-  Proposed Planning Area Boundary
-  Existing Planning Area Boundary
-  Updated Communities
-  Assessor Parcel

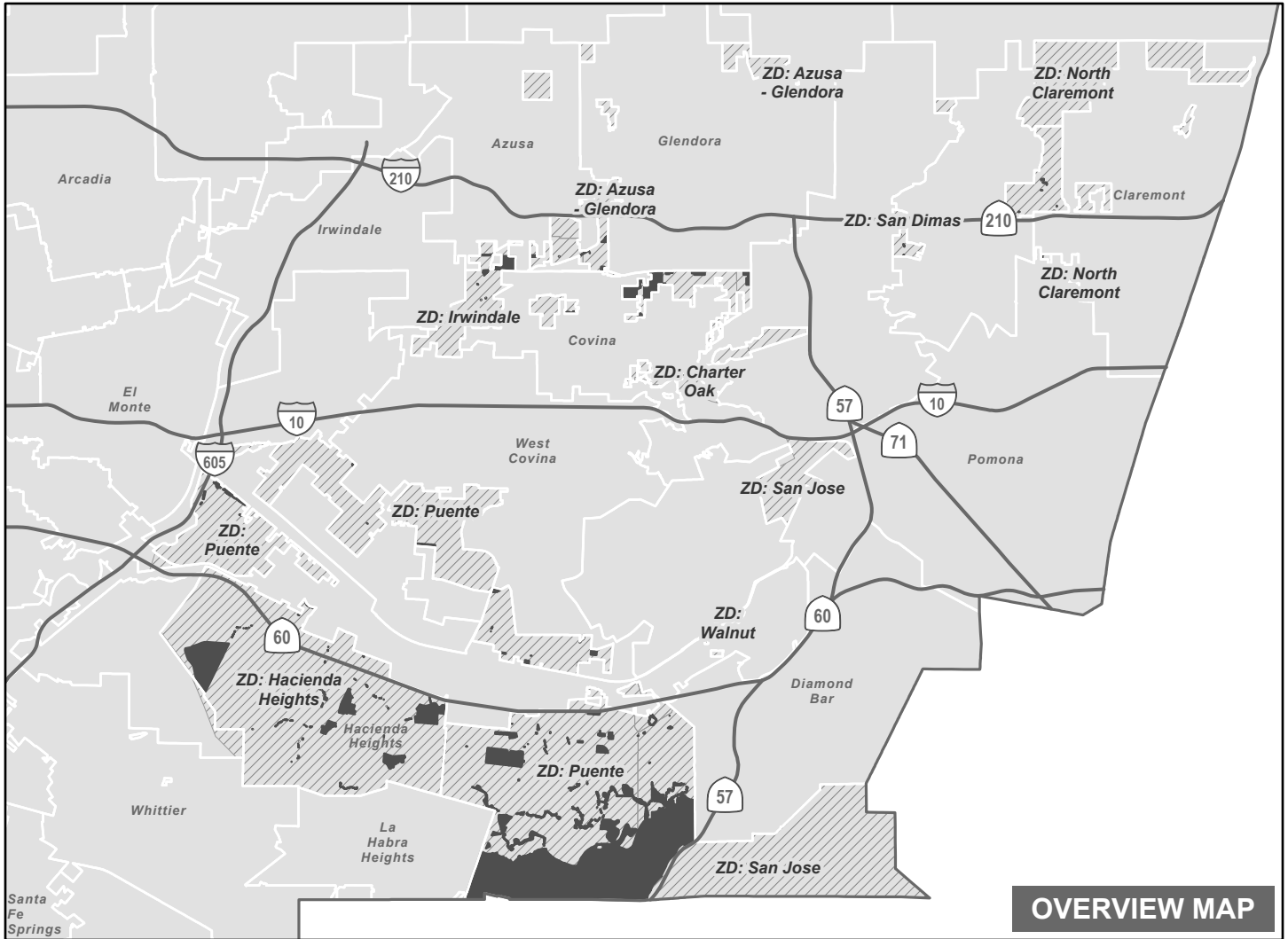
The Assessor Identification Number (AIN) is to be used for reference only, in addition to any recorded tract or parcel boundaries labeled in the map. The GIS layer shall represent the "digital description" of the Plan Amendment area and could represent whole or portions of a parcel per the Assessor GIS database as of the date recorded in the Plan Amendment above.



THE REGIONAL PLANNING COMMISSION
 COUNTY OF LOS ANGELES
 MICHAEL R. HASTINGS, CHAIR
 AMY J. BODEK, AICP, DIRECTOR OF REGIONAL PLANNING

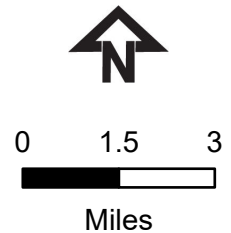
AMENDMENT TO COUNTYWIDE GENERAL PLAN
 EAST SAN GABRIEL VALLEY PLANNING AREA
PLAN AMENDMENT: RPPL 2022003554
 ON: _____

MULTIPLE LAND USE POLICY CHANGES



OVERVIEW MAP

-  Freeway
-  Selected Zoned District (ZD)
-  Land Use Policy Change Area
-  City / Unincorporated Boundary



THE REGIONAL PLANNING COMMISSION
 COUNTY OF LOS ANGELES
 MICHAEL R. HASTINGS, CHAIR
 AMY J. BODEK, AICP, DIRECTOR OF REGIONAL PLANNING

East San Gabriel Valley Planning Area Land Use Policy Changes

Zoned District(s): Puente

Land Use Policy Change*

H5 - Residential 5

RL10 - Rural Land 10

Base Layers

Zoned District

Parcels

Unincorporated Area

Map Series Grid

Surrounding Planning Area

Street Types

Primary

Secondary

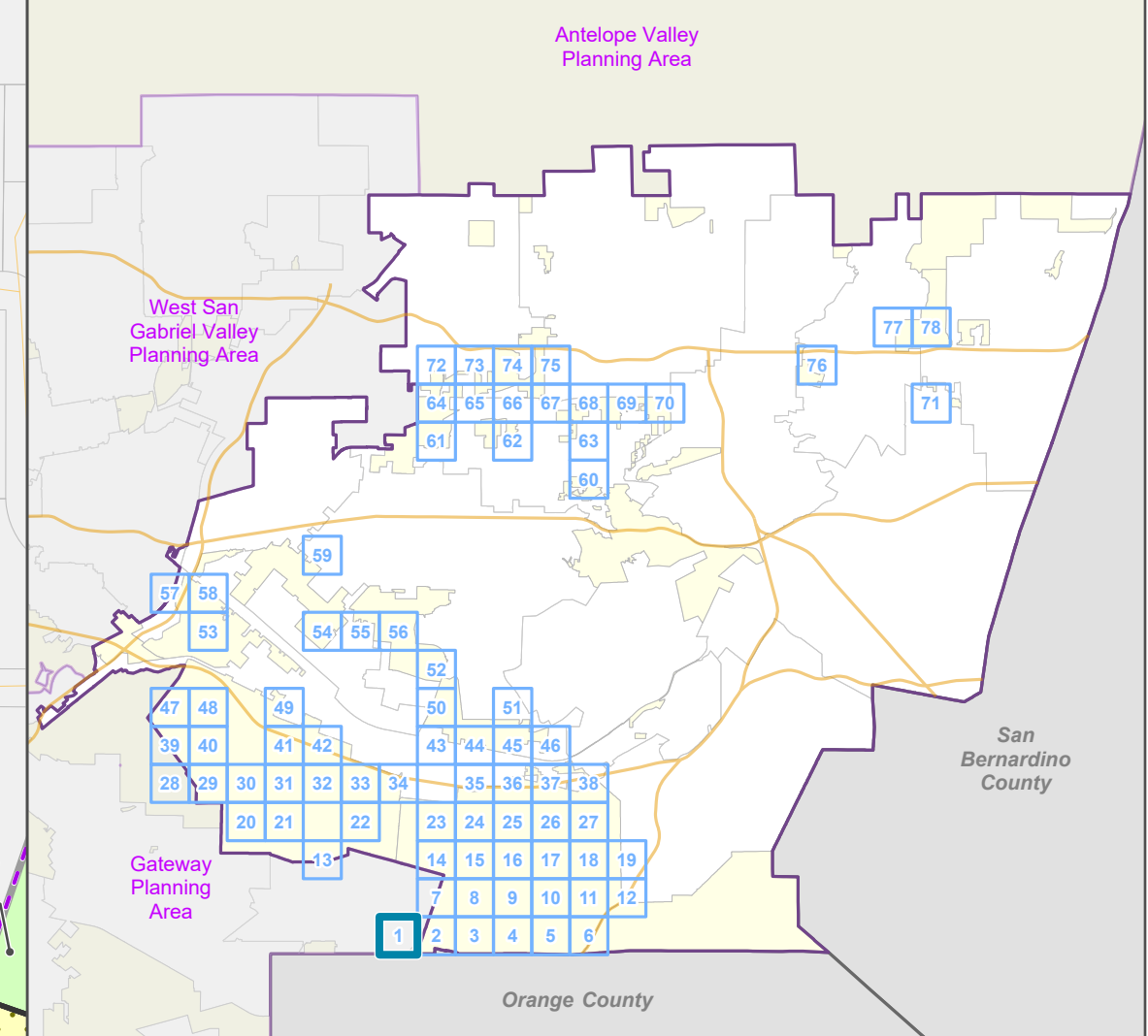
Minor

Private Road

* NOTE ABOUT COMMUNITY PLANS:

Both Hacienda Heights and Rowland Heights have land use policy categories that are changing from the Community Plan land use categories to the equivalent land use categories that were defined by the General Plan update in 2015 (eg. U1 to H5). Although these are technically changes to the land use policy, they are not mapped in this series. The only changes mapped in this series are those changes which either change the density or intensity of the use, or change to an entirely different category.

Key Map



OS-PR to RL10

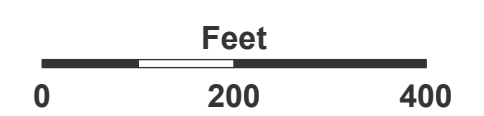
OS-PR to H5

H9 to H5

ZD: PUENTE



LOS ANGELES COUNTY
Dept. of Regional Planning
320 W. Temple St.
Los Angeles, CA 90012



Prepared by DRP GIS Section / July 2023



**East San Gabriel Valley Planning Area
Land Use Policy Changes**

Zoned District(s): Puente

Land Use Policy Change*

- H5 - Residential 5
- RL10 - Rural Land 10
- RL40 - Rural Land 40

Base Layers

- Zoned District
- Parcels
- Unincorporated Area
- Map Series Grid
- Surrounding Planning Area

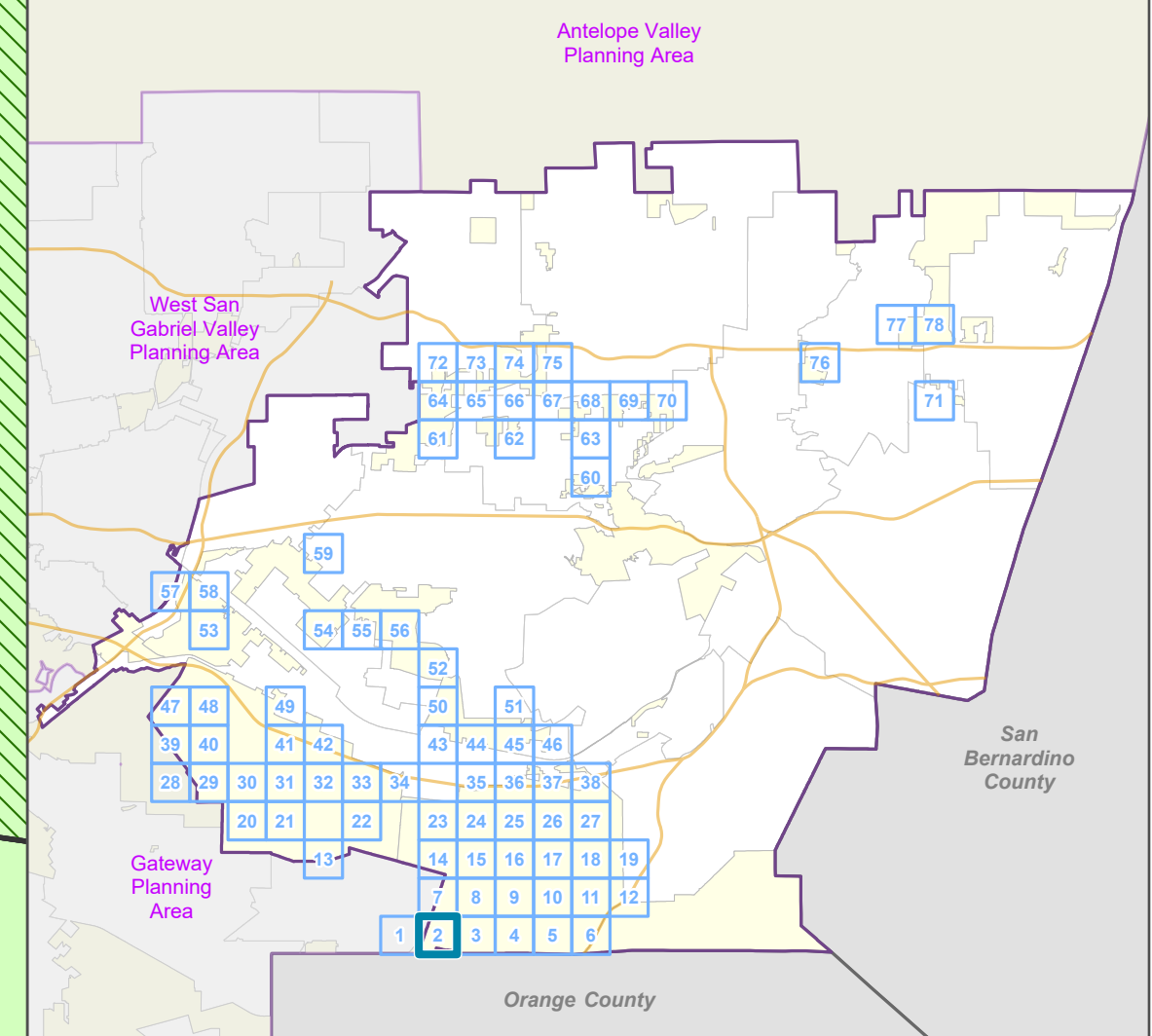
Street Types

- Primary
- Secondary
- Minor
- Trail

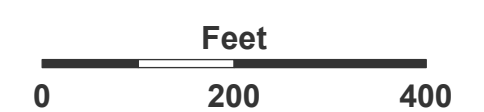
*** NOTE ABOUT COMMUNITY PLANS:**

Both Hacienda Heights and Rowland Heights have land use policy categories that are changing from the Community Plan land use categories to the equivalent land use categories that were defined by the General Plan update in 2015 (eg. U1 to H5). Although these are technically changes to the land use policy, they are not mapped in this series. The only changes mapped in this series are those changes which either change the density or intensity of the use, or change to an entirely different category.

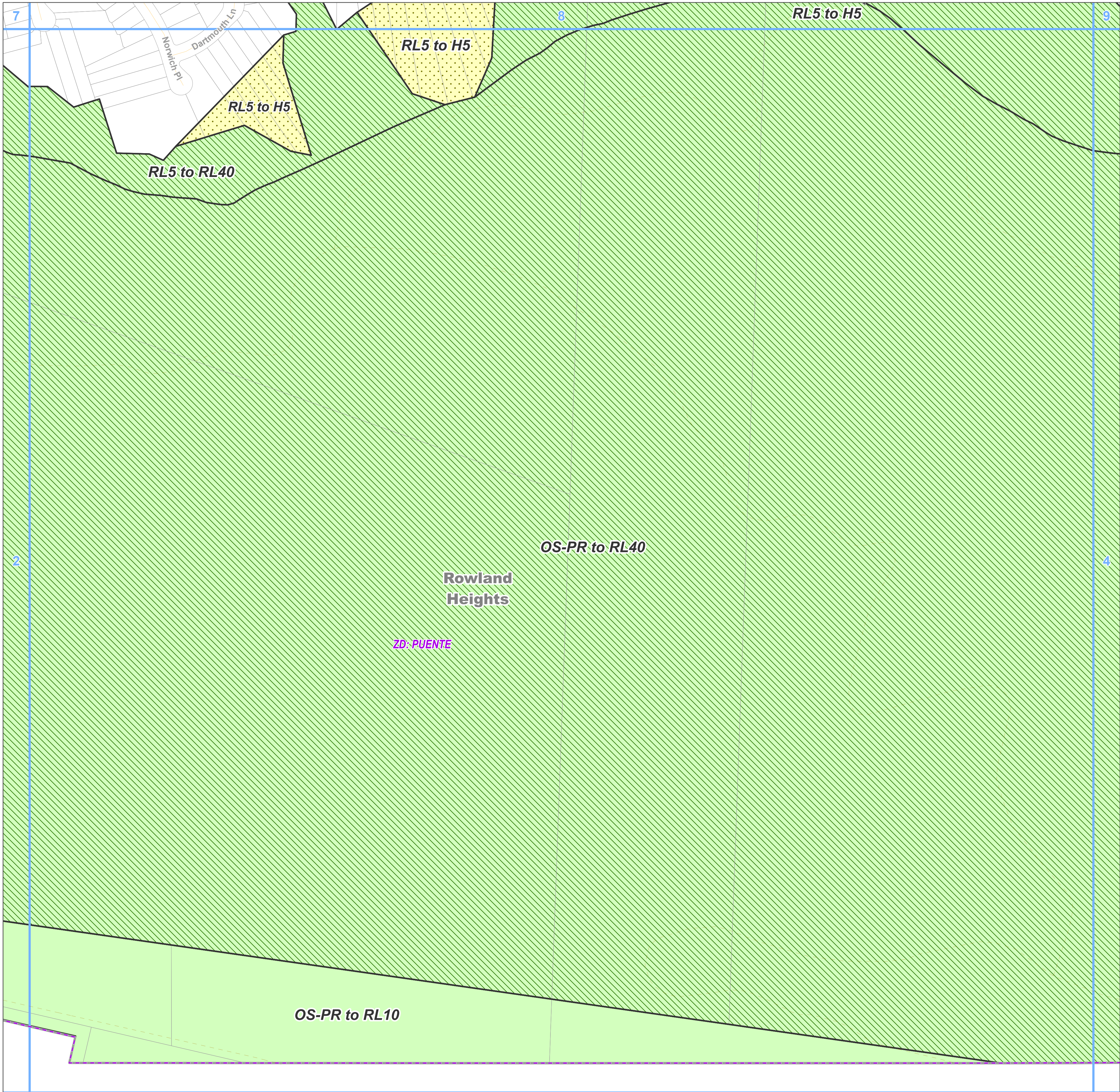
Key Map



LOS ANGELES COUNTY
Dept. of Regional Planning
320 W. Temple St.
Los Angeles, CA 90012



Prepared by DRP GIS Section / July 2023



**East San Gabriel Valley Planning Area
Land Use Policy Changes**

Zoned District(s): Puente

Land Use Policy Change*

- H5 - Residential 5
- RL10 - Rural Land 10
- RL40 - Rural Land 40

Base Layers

- Zoned District
- Parcels
- Unincorporated Area
- Map Series Grid

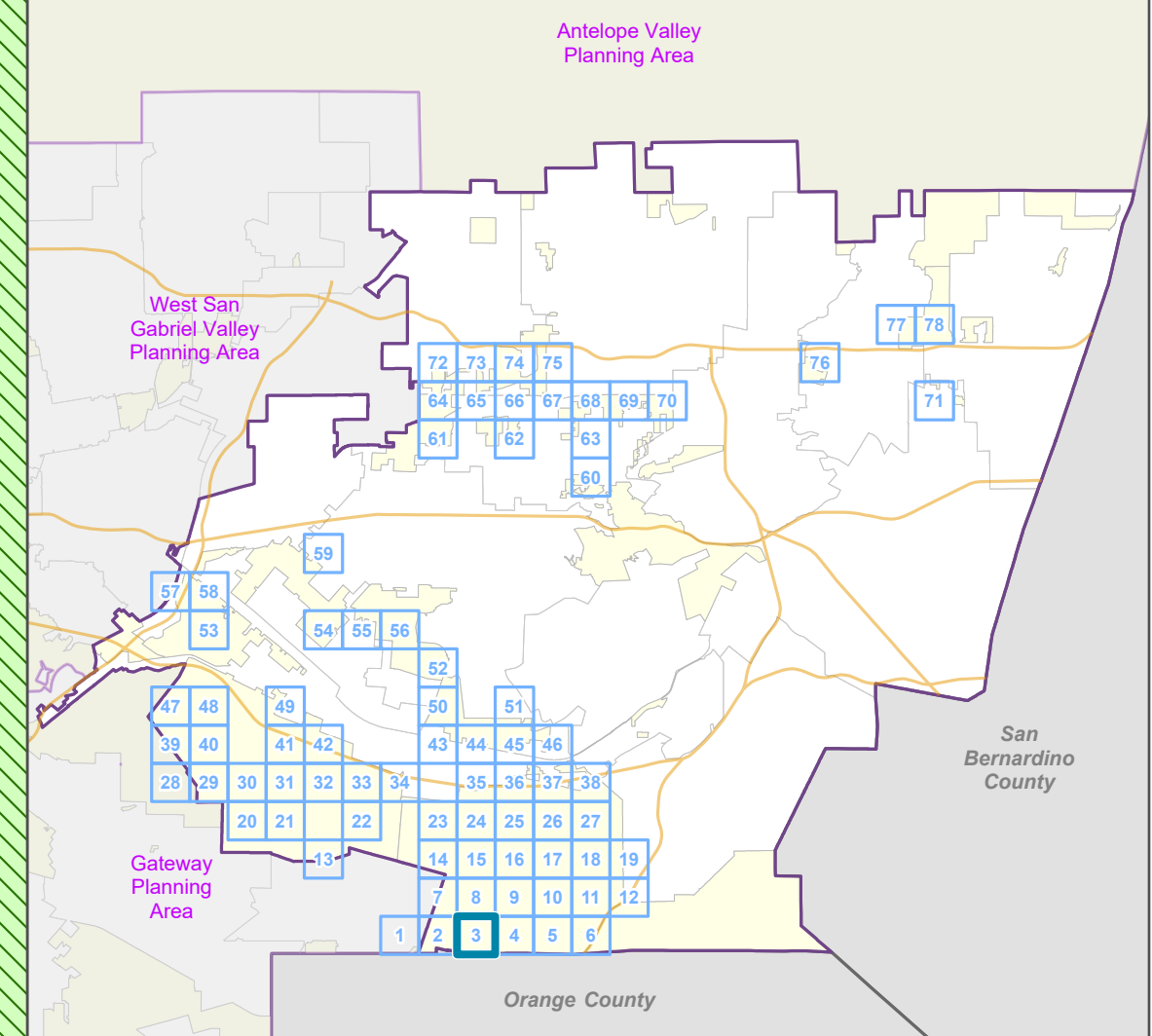
Street Types

- Minor
- Trail

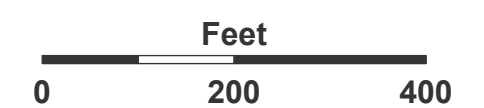
*** NOTE ABOUT COMMUNITY PLANS:**

Both Hacienda Heights and Rowland Heights have land use policy categories that are changing from the Community Plan land use categories to the equivalent land use categories that were defined by the General Plan update in 2015 (eg. U1 to H5). Although these are technically changes to the land use policy, they are not mapped in this series. The only changes mapped in this series are those changes which either change the density or intensity of the use, or change to an entirely different category.

Key Map



LOS ANGELES COUNTY
Dept. of Regional Planning
320 W. Temple St.
Los Angeles, CA 90012



Prepared by DRP GIS Section / July 2023



**East San Gabriel Valley Planning Area
Land Use Policy Changes**

Zoned District(s): Puente

Land Use Policy Change*

- OS-PR - Open Space - Parks and Recreation
- RL40 - Rural Land 40

Base Layers

- Zoned District
- Parcels
- Unincorporated Area
- Map Series Grid

Street Types

- Minor
- Trail

RL5 to RL40

Rowland Heights

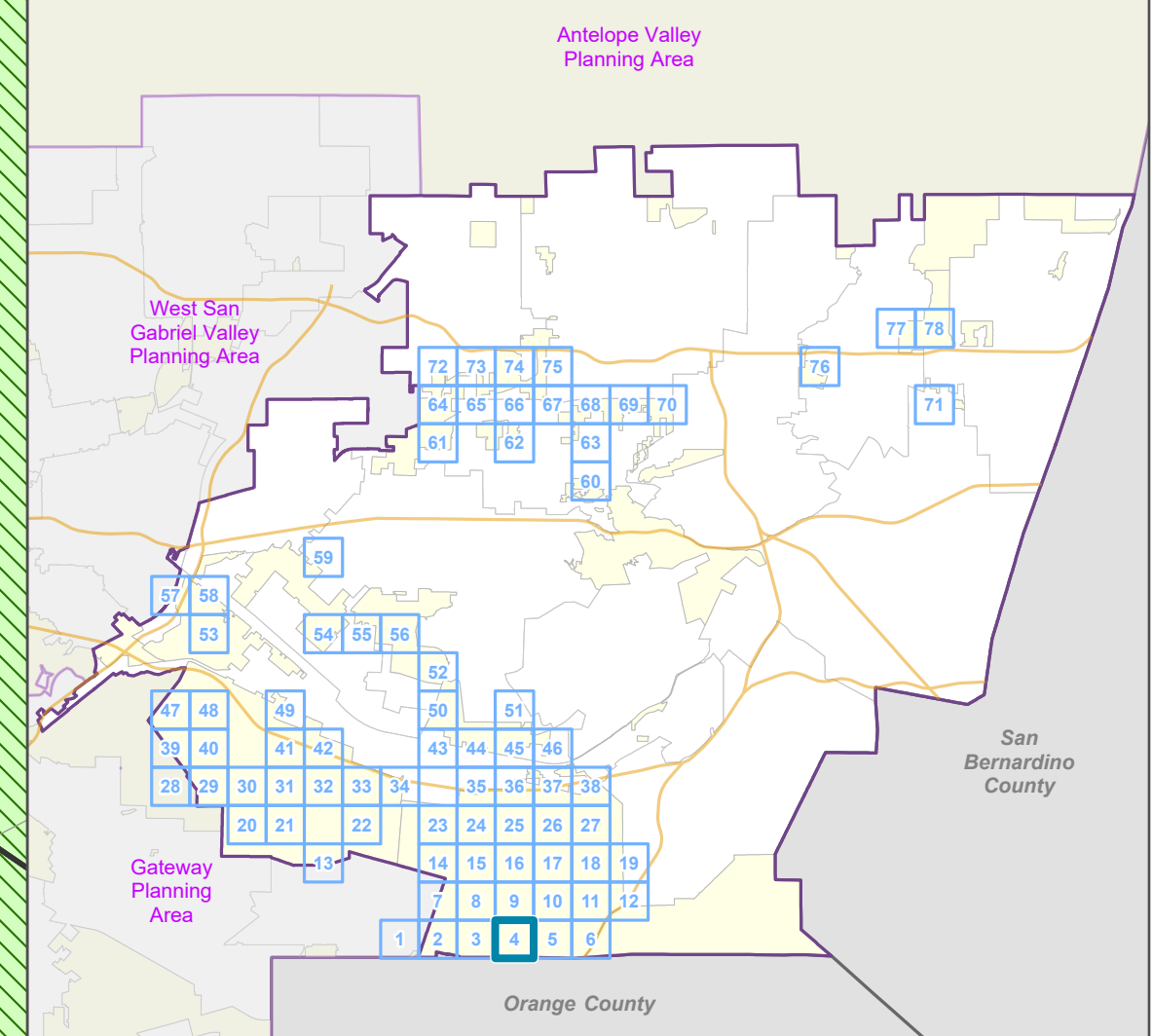
ZD: PUENTE

OS-PR to RL40

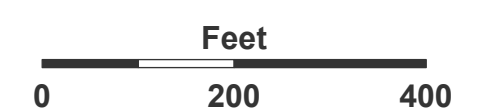
*** NOTE ABOUT COMMUNITY PLANS:**

Both Hacienda Heights and Rowland Heights have land use policy categories that are changing from the Community Plan land use categories to the equivalent land use categories that were defined by the General Plan update in 2015 (eg. U1 to H5). Although these are technically changes to the land use policy, they are not mapped in this series. The only changes mapped in this series are those changes which either change the density or intensity of the use, or change to an entirely different category.

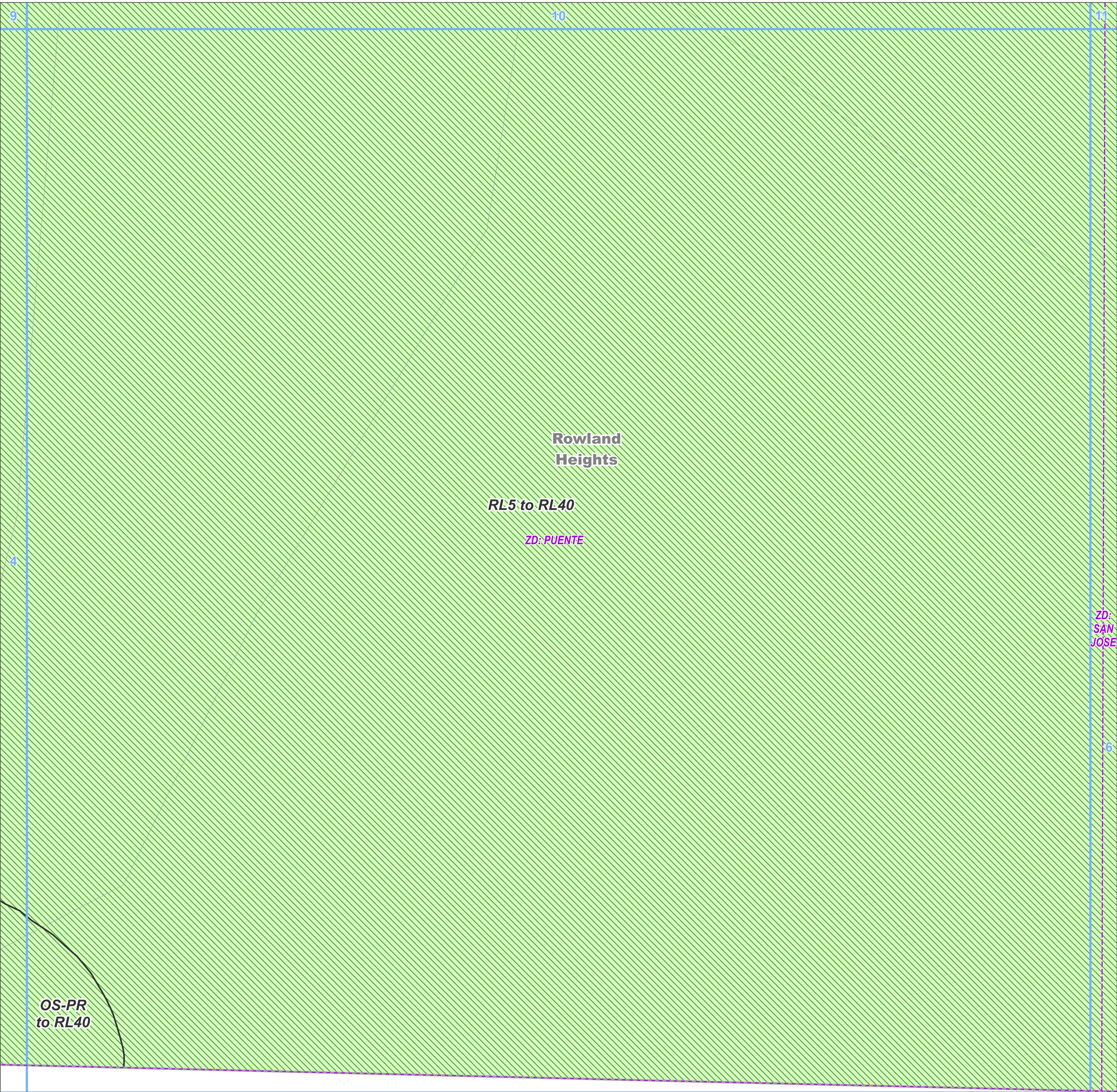
Key Map



LOS ANGELES COUNTY
Dept. of Regional Planning
320 W. Temple St.
Los Angeles, CA 90012



Prepared by DRP GIS Section / July 2023



**East San Gabriel Valley Planning Area
Land Use Policy Changes**

Zoned District(s): Puente, San Jose

Land Use Policy Change*

RL40 - Rural Land 40

Base Layers

Zoned District

Parcels

Unincorporated Area

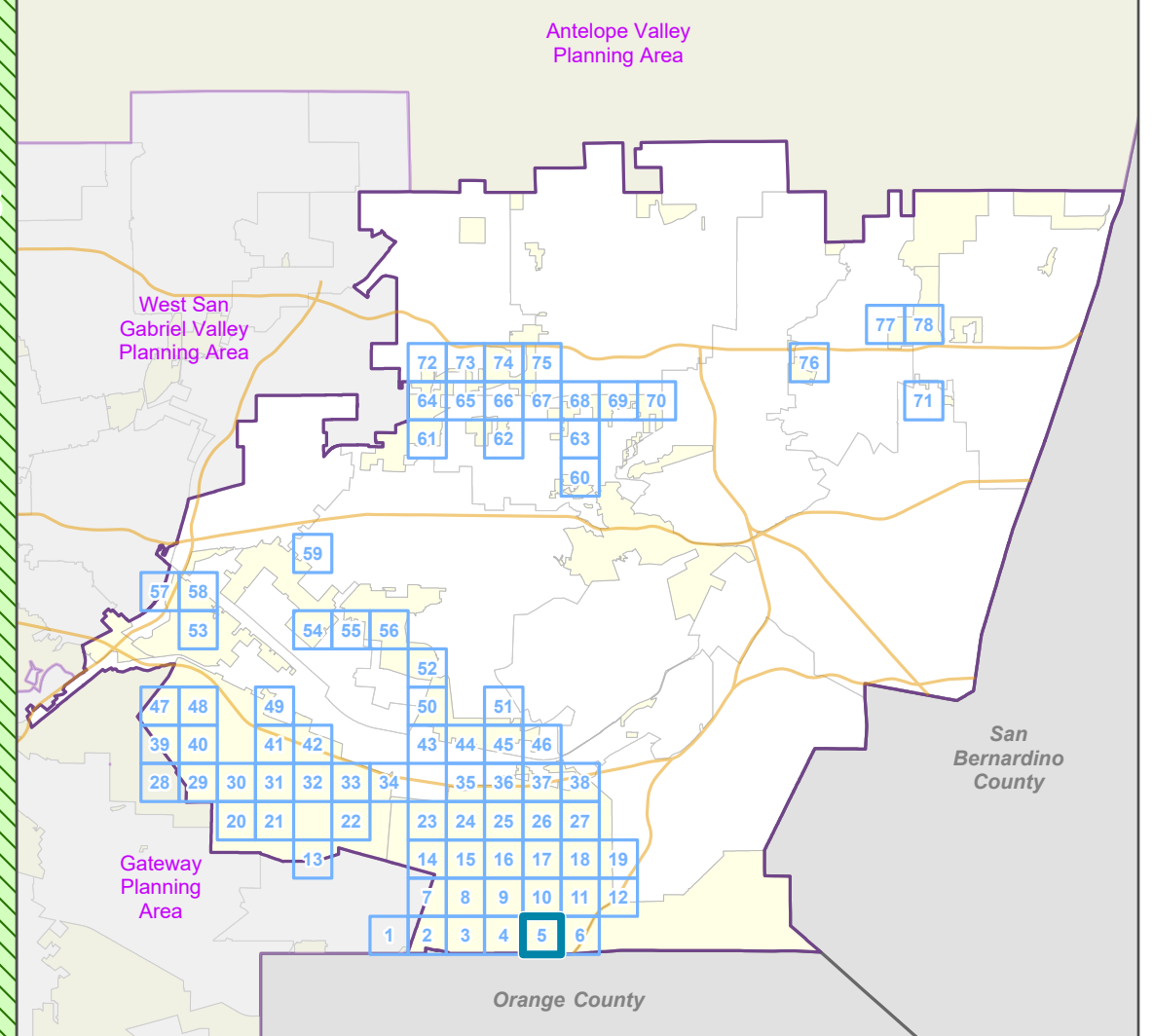
Map Series Grid

*** NOTE ABOUT COMMUNITY PLANS:**

Both Hacienda Heights and Rowland Heights have land use policy categories that are changing from the Community Plan land use categories to the equivalent land use categories that were defined by the General Plan update in 2015 (eg. U1 to H5). Although these are technically changes to the land use policy, they are not mapped in this series. The only changes mapped in this series are those changes which either change the density or intensity of the use, or change to an entirely different category.

ZD:
SAN
JOSE

Key Map



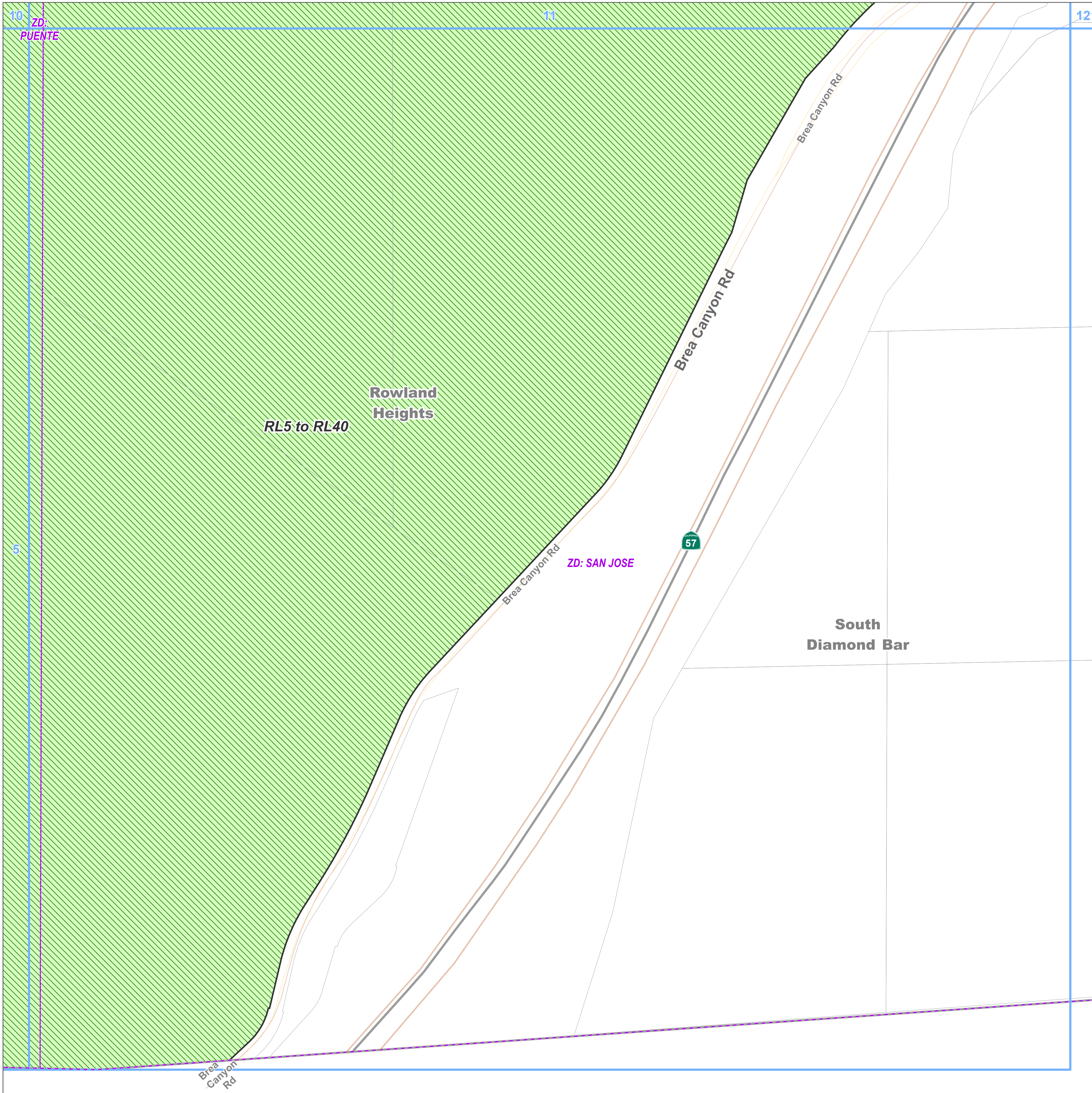
OS-PR
to RL40



LOS ANGELES COUNTY
Dept. of Regional Planning
320 W. Temple St.
Los Angeles, CA 90012



Prepared by DRP GIS Section / July 2023



**East San Gabriel Valley Planning Area
Land Use Policy Changes**

Zoned District(s): Puente, San Jose

Land Use Policy Change*

RL40 - Rural Land 40

Base Layers

Zoned District

Parcels

Unincorporated Area

Map Series Grid

Street Types

Freeway

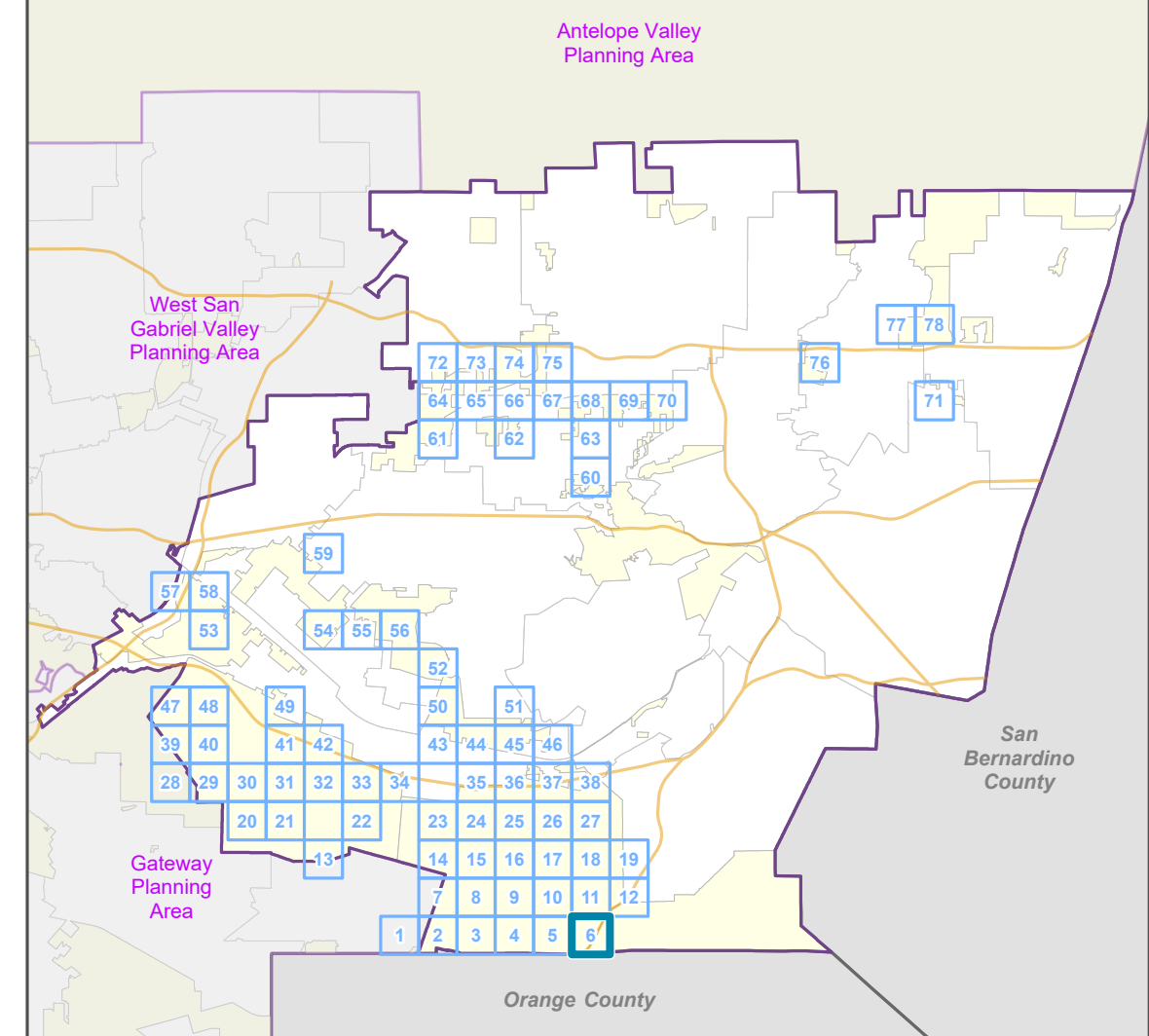
Primary

Minor

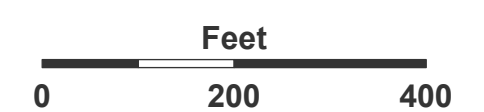
*** NOTE ABOUT COMMUNITY PLANS:**

Both Hacienda Heights and Rowland Heights have land use policy categories that are changing from the Community Plan land use categories to the equivalent land use categories that were defined by the General Plan update in 2015 (eg. U1 to H5). Although these are technically changes to the land use policy, they are not mapped in this series. The only changes mapped in this series are those changes which either change the density or intensity of the use, or change to an entirely different category.

Key Map



LOS ANGELES COUNTY
Dept. of Regional Planning
320 W. Temple St.
Los Angeles, CA 90012

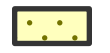





Prepared by DRP GIS Section / July 2023





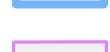
East San Gabriel Valley Planning Area Land Use Policy Changes

Zoned District(s): Puente





Land Use Policy Change*

-  H5 - Residential 5
-  H9 - Residential 9
-  OS-PR - Open Space - Parks and Recreation
-  RL40 - Rural Land 40

Base Layers

-  Zoned District
-  Parcels
-  Unincorporated Area
-  Map Series Grid
-  Surrounding Planning Area

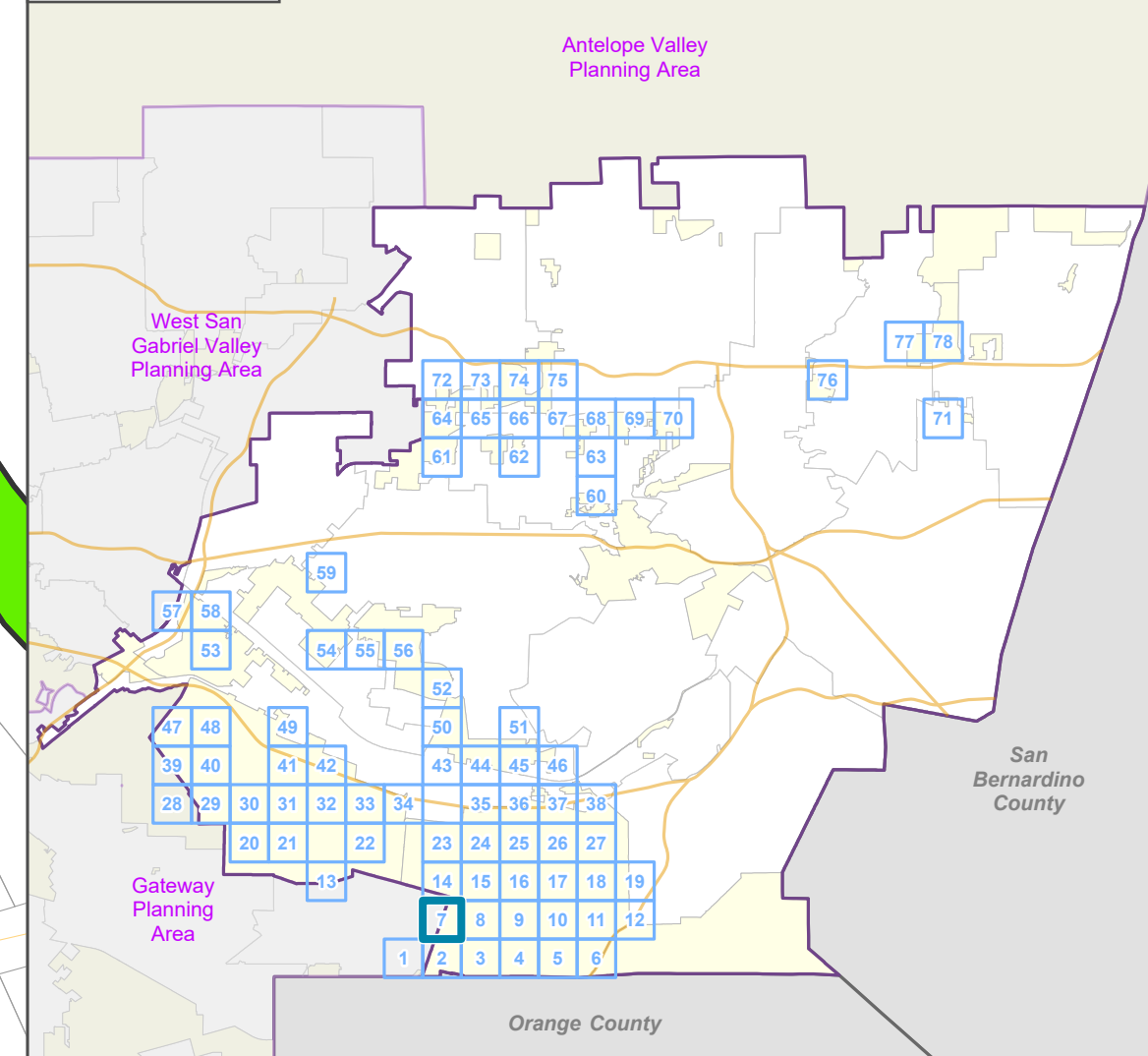
Street Types

-  Primary
-  Secondary
-  Minor
-  Private Road

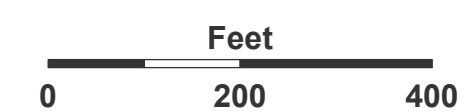
* NOTE ABOUT COMMUNITY PLANS:

Both Hacienda Heights and Rowland Heights have land use policy categories that are changing from the Community Plan land use categories to the equivalent land use categories that were defined by the General Plan update in 2015 (eg. U1 to H5). Although these are technically changes to the land use policy, they are not mapped in this series. The only changes mapped in this series are those changes which either change the density or intensity of the use, or change to an entirely different category.

Key Map



LOS ANGELES COUNTY
Dept. of Regional Planning
320 W. Temple St.
Los Angeles, CA 90012



Prepared by DRP GIS Section / July 2023

